



Clare Drive, Highfields Caldecote Cambridge
£650,000 **Freehold**

**Sharman
Quinney**

Key Features



- Recently Refurbished Bathrooms and Kitchen
- Downstairs WC
- Quiet village Location
- Parking for Multiple Cars
- No Forward Chain

In Highfields Caldecote this generous family home is located perfectly. Overlooking the open green to front with spacious living throughout. Highfields Caldecote offers a social club, Parish Church, Primary School and is within the catchment area for the highly regarded Comberton Village College. Cambridge is some 7 miles distant while the access to the M11 (southbound) is 4 miles away. Train links to London are available at Royston and St Neots in addition to Cambridge railway station. Further shopping facilities are located in the neighbouring villages of Cambourne, Bourn, Hardwick and Comberton plus there is a regular local bus service into Cambridge City Centre.

Ground Floor

Entrance Hall



Leading to;

Cloakroom

Two-piece suite with Wash Hand Basin and low-level WC with window to front.

Kitchen - 16.04" Max x 13.10" (4.88m Max x 3.99m)

Renovated in 2021, the Kitchen is fitted with a matching range of base and eye level units with 2 windows to front.

Utility - 5.08" x 5.08" (1.54m x 1.54)

Space for a Fridge/Freezer and Washing Machine with a door leading to the Garden.

Conservatory - 17.07" Max x 9.10" (5.20m Max x 2.77m)

French Doors leading to the garden. The radiator enables usage all year round.

Lounge - 15.06" x 12.04" (4.59m x 3.66m)

Generous lounge with 2 windows to front and a features log burner.

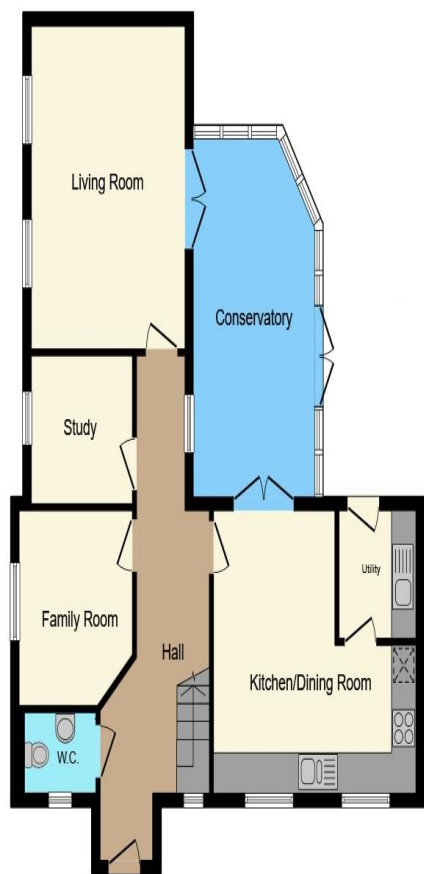
Study - 6.08" x 8.01" (1.85m x 2.44m)

Window to front overlooking the green.

Multifunctional Room - 9.11" x 8.09" (2.77m x 2.46m)

Generous sized room with multiple uses such as; playroom, study, lounge or downstairs bedroom with window to front.

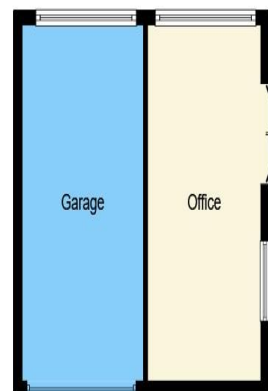




Ground Floor



First Floor



Outbuilding

First Floor
 Master Bedroom - 15.06" x 12.04" (4.59m x 3.66m)
 Dual Aspect windows with 4 built in wardrobes.
 Leading to;

En-Suite
 Fitted with a three-piece suite comprising of shower cubicle, wash hand basin, WC and window to side.

Bedroom 2 - 8.08" x 13.10" (2.46m x 3.99m)
 Dual Aspect windows.

Family Bathroom - 8.03" x 6.08" (2.44m x 1.85m)
 Fitted with four-piece suite comprising of a bath, shower cubicle, wash hand basin, WC and window to front.

Bedroom 3 - 6.09" x 11.09" (1.85m x 3.38m)
 Window to side.

Bedroom 4 - 7.07" x 10.06" Max (2.15m x 3.06m Max)
 Window to front.


This floor plan is for illustrative purposes only. It is not drawn to scale. Any measurements, floor areas (including any total floor area), openings and orientation are approximate. No details are guaranteed, they cannot be relied upon for any purpose and they do not form part of any agreement. No liability is taken for any error, omission or misstatement. A party must rely upon its own inspection(s). Powered by www.focalagent.com

To view this property call Sharman Quinney on:
01954 710620

Selling your property?

Contact us to arrange a **FREE** home valuation.

 01954 710620

 13 High Street, Cambourne, CAMBRIDGE,
Cambridgeshire, CB23 6JX

 cambourne@sharmanquinney.co.uk

 www.sharmanquinney.co.uk



 SCAN ME



Sharman Quinney Holdings Limited is registered in England and Wales under company number 4174227, Registered Office is Cumbria House, 16-20 Hockliffe Street, Leighton Buzzard, Bedfordshire, LU7 1GN. VAT Registration Number is 500 2481 05.

1: These particulars do not constitute part or all of an offer or contract. 2: The measurements indicated are supplied for guidance only and as such must be considered incorrect. 3: Potential buyers are advised to recheck the measurements before committing to any expense. 4: Sharman Quinney has not tested any apparatus, equipment, fixtures, fittings or services and it is the buyers interests to check the working condition of any appliances. 5: Sharman Quinney has not sought to verify the legal title of the property and buyers must obtain verification from their legal representative. 6: Intending purchasers will be asked to produce identification documentation at a later stage and we would ask your co-operation in order that there will be no delay in agreeing the sale. Ref: CSQ203348 - 0002

