

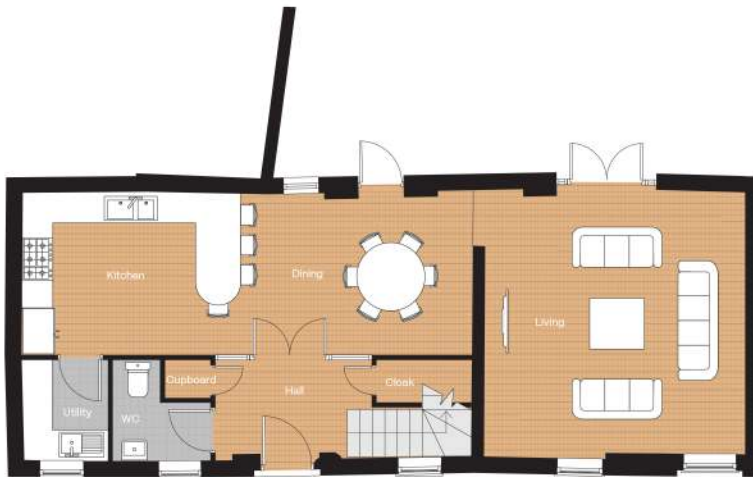


THE STABLES

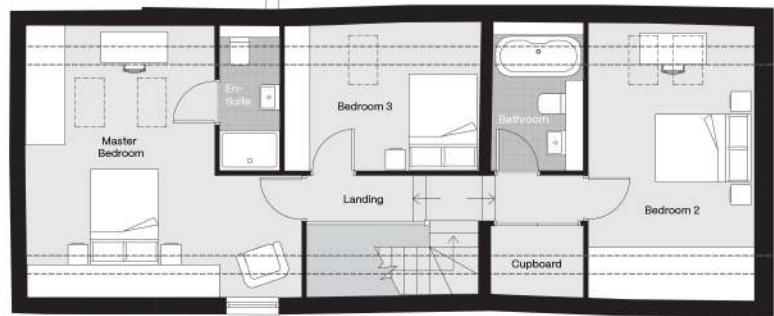
- Stylish three bedroom barn conversion
- Exclusive development of just 9 stylish properties
- Spacious open plan kitchen diner
- Lounge having French doors leading to the garden
- Separate utility
- Three double bedrooms, master ensuite
- Granite work surfaces and integrated branded appliances
- Outside tap and power socket
- Intruder alarm
- Double garage and parking



THE STABLES



Ground Floor



First Floor

Ground Floor (LxW in mm)

ENTRANCE HALLWAY CLOAKROOM AND STORE	
KITCHEN / DINING	3200 x 9000
UTILITY ROOM	2000 x 1700
LIVING ROOM	5300 x 5100

First Floor

MASTER BEDROOM	5300 x 5200 (max)
ENSUITE	
BEDROOM 2	5300 x 3100
BEDROOM 3	2600 x 3700
BATHROOM	

For more details call:

01332 540 522

DISCLAIMER

All images used are for illustrative purposes only. Individual features such as windows, brick and other materials' colours may vary, as may heating and electrical layouts. The specifications of houses are correct at the date of print but may be subject to change as necessary and without notice. Images are indicative of the quality and style of the specification and may not represent wholly the actual fittings and furnishings at a development. Specification is not intended to form part of any contract or warranty unless specifically incorporated in writing into the contract.

Floor plans are intended to give a general indication of the proposed floor layout only. The dimensions are accurate to within +or- 50mm. Dimensions should not be used for carpet sizes, appliance spaces or items of furniture. Please ask our sales adviser for details of the treatments specified for individual plots. All images and dimensions are not intended to form part of any contract or warranty. Furniture and landscaping is shown for illustrative purposes only.