

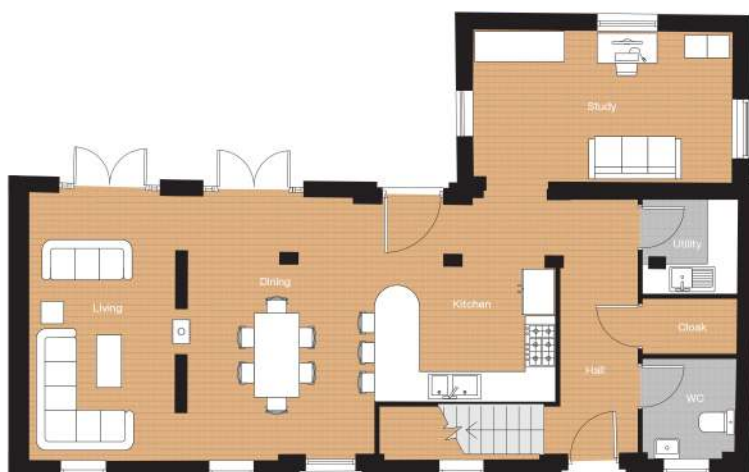


THE HAYLOFT

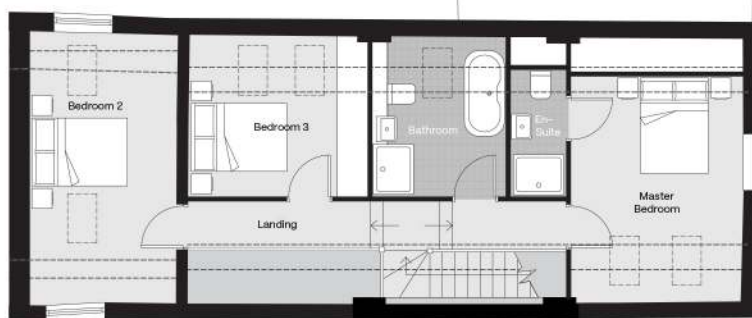
- Charming three bedroom barn conversion
- Exclusive development of just 9 stylish properties
- Fabulous open plan kitchen diner with French doors
- Granite work surfaces and integrated branded appliances
- Feature lounge with French doors
- Spacious study / snug / second lounge
- Separate utility
- Three double bedrooms, master ensuite
- Outside tap and power socket
- Intruder alarm
- Double garage and parking



THE HAYLOFT



Ground Floor



First Floor

Ground Floor (LxW in mm)

ENTRANCE HALLWAY CLOAKROOM AND STORE	
KITCHEN / DINING	5300 x 7300 (max)
LIVING ROOM	5300 x 2900
UTILITY ROOM	1900 x 1900
STUDY	2900 x 5100

First Floor

MASTER BEDROOM	4500 x 3400
ENSUITE	
BEDROOM 2	5300 x 2900
BEDROOM 3	3200 x 3500
BATHROOM	

For more details call:

01332 540 522

DISCLAIMER

All images used are for illustrative purposes only. Individual features such as windows, brick and other materials' colours may vary, as may heating and electrical layouts. The specifications of houses are correct at the date of print but may be subject to change as necessary and without notice. Images are indicative of the quality and style of the specification and may not represent wholly the actual fittings and furnishings at a development. Specification is not intended to form part of any contract or warranty unless specifically incorporated in writing into the contract.

Floor plans are intended to give a general indication of the proposed floor layout only. The dimensions are accurate to within +or- 50mm. Dimensions should not be used for carpet sizes, appliance spaces or items of furniture. Please ask our sales adviser for details of the treatments specified for individual plots. All images and dimensions are not intended to form part of any contract or warranty. Furniture and landscaping is shown for illustrative purposes only.