

WE VALUE



YOUR HOME



Thames Street, Wallingford
£690,000



Set within the heart of Wallingford and just a short walk from the River Thames, this quirky four-bedroom detached home offers flexible living across three levels. The ground floor features a spacious open-plan layout where the lounge, dining area and kitchen flow together, enhanced by dual-aspect windows and French doors that fill the space with natural light. The kitchen comes well-equipped with integrated appliances, and the layout is completed by a family bathroom, a fourth bedroom, and internal access to the garage.

A spiral staircase leads to the principal bedroom on the first floor, which enjoys its own en-suite bathroom and a separate dressing room. The lower ground floor offers two further double bedrooms, ideal for family or guests.

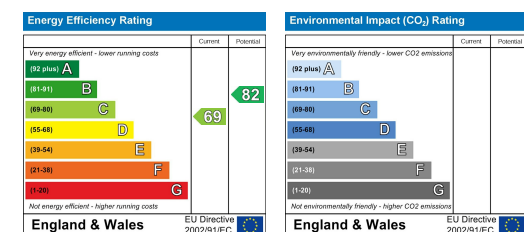
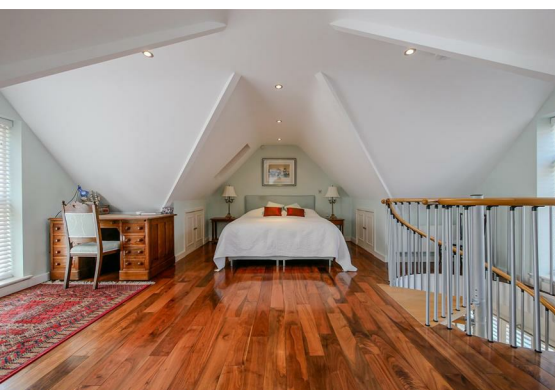
Outside, the landscaped courtyard garden provides an attractive, low-maintenance space to enjoy.

What the owner says:
"We're just a short walk from the town centre, Waitrose, pubs, and local bus routes. The garage has direct access into the house, which is a real bonus. We love being right on the Thames Path—perfect for walks along the river and through Castle Meadows, often with red kites soaring overhead."



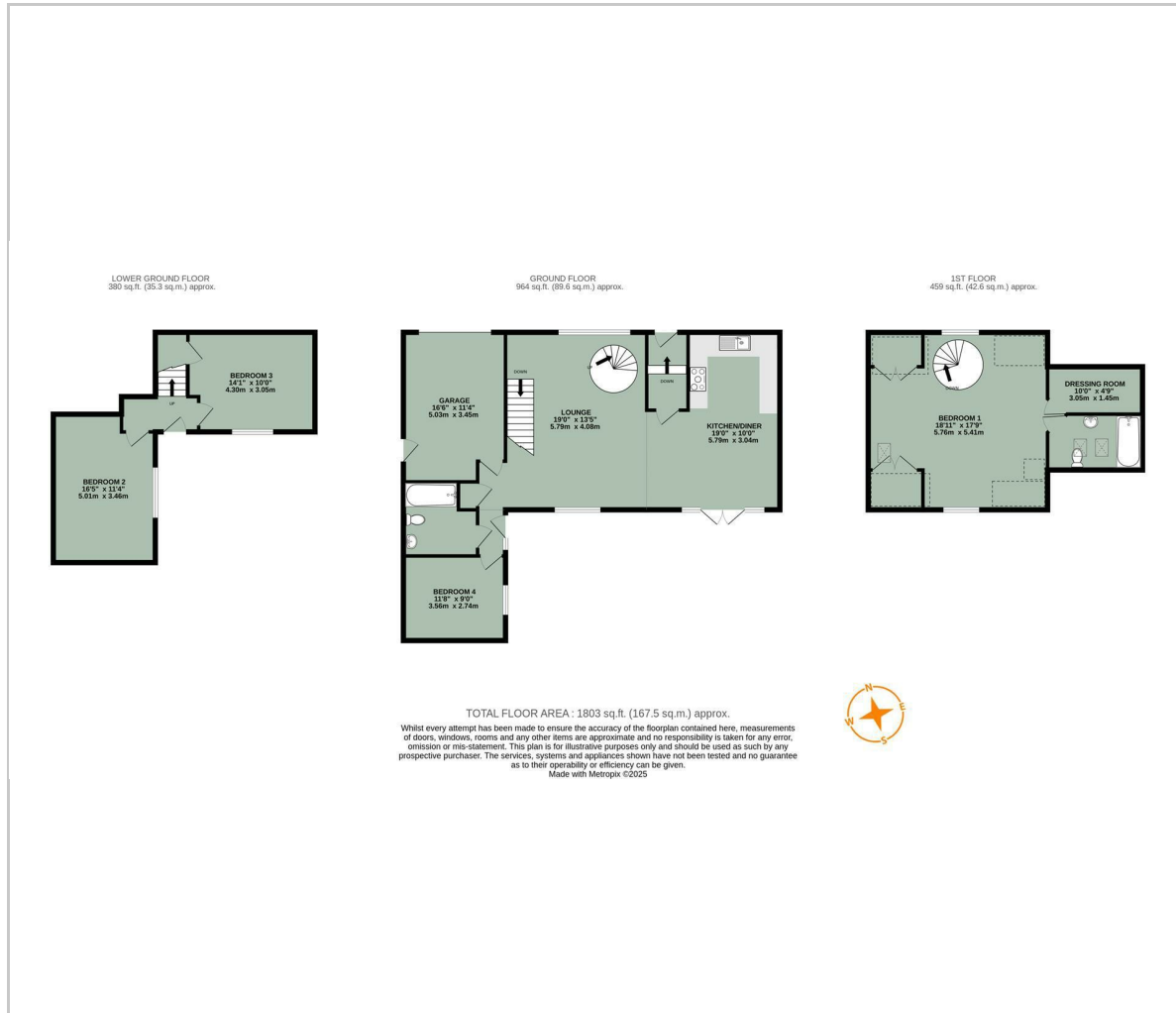


- PRIME WALLINGFORD TOWN CENTRE LOCATION
- STYLISH OPEN PLAN LOUNGE, DINING ROOM & KITCHEN
- SPACIOUS LAYOUT ARRANGED OVER THREE FLOORS
- FOUR WELL-PROPORTIONED DOUBLE BEDROOMS
- LANDSCAPED REAR COURTYARD GARDEN
- CONVENIENT INTEGRAL GARAGE
- MOMENTS FROM THE SCENIC RIVER THAMES
- FIRST FLOOR BEDROOM WITH EN-SUITE BATHROOM & DRESSING ROOM

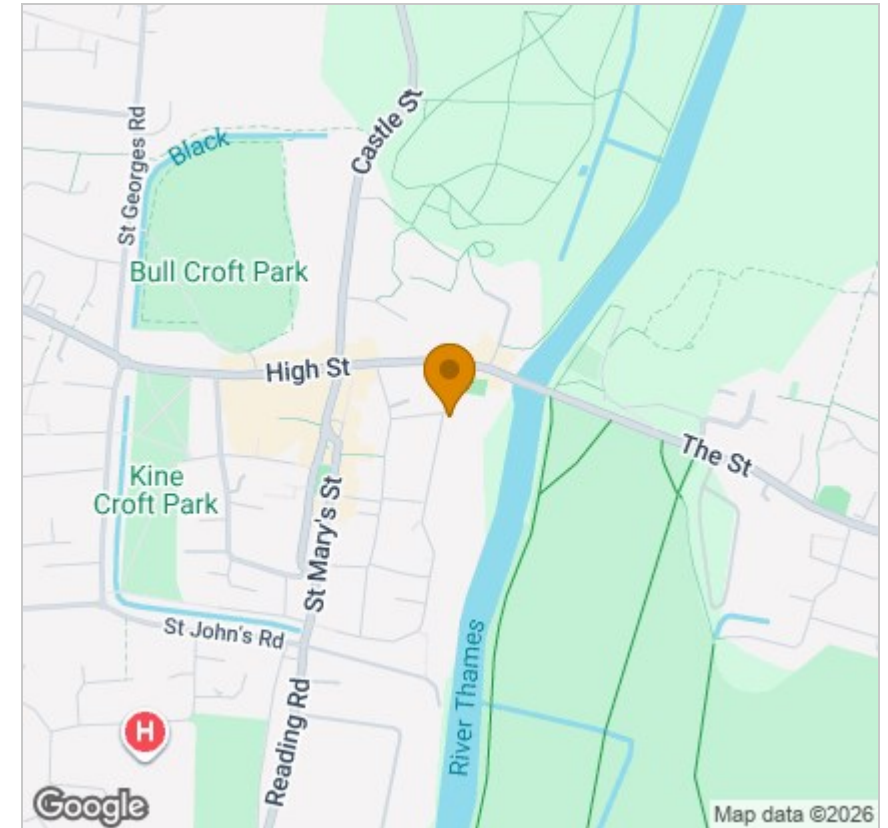


Energy Efficiency Graph

Floor Plan



Area Map



Viewing

Please contact our In House Sales & Lettings Office on 01491 839999 opt.1 if you wish to arrange a viewing appointment for this property or require further information.

These particulars, whilst believed to be accurate are set out as a general outline only for guidance and do not constitute any part of an offer or contract. Intending purchasers should not rely on them as statements of representation of fact, but must satisfy themselves by inspection or otherwise as to their accuracy. No person in this firm's employment has the authority to make or give any representation or warranty in respect of the property.

28 St Martins Street, Wallingford, Oxfordshire, OX10 0AL
Tel: 01491 839999 opt.1 Email: sales@inhouseestateagents.co.uk www.inhouseestateagents.co.uk