

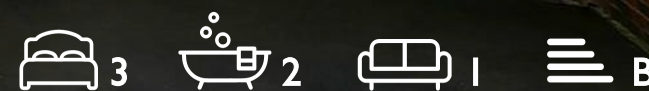
WE VALUE



YOUR HOME



Clover Fields, Didcot  
£1,800 PCM





\*Available from early December 2025 for long term let, part-furnished\*

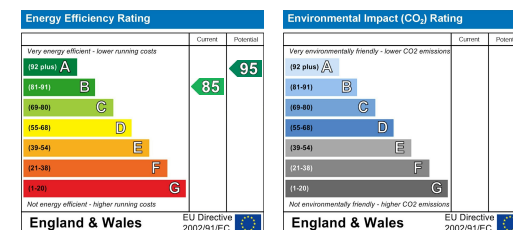
Arranged over three floors, this well-presented and stylish three-bedroom family home features an en-suite to the master bedroom, a spacious kitchen with integral appliances, a cloakroom, a south-west facing rear garden, off-street parking and a garage. Ideal for those looking for a homely property located close to amenities and transport links.





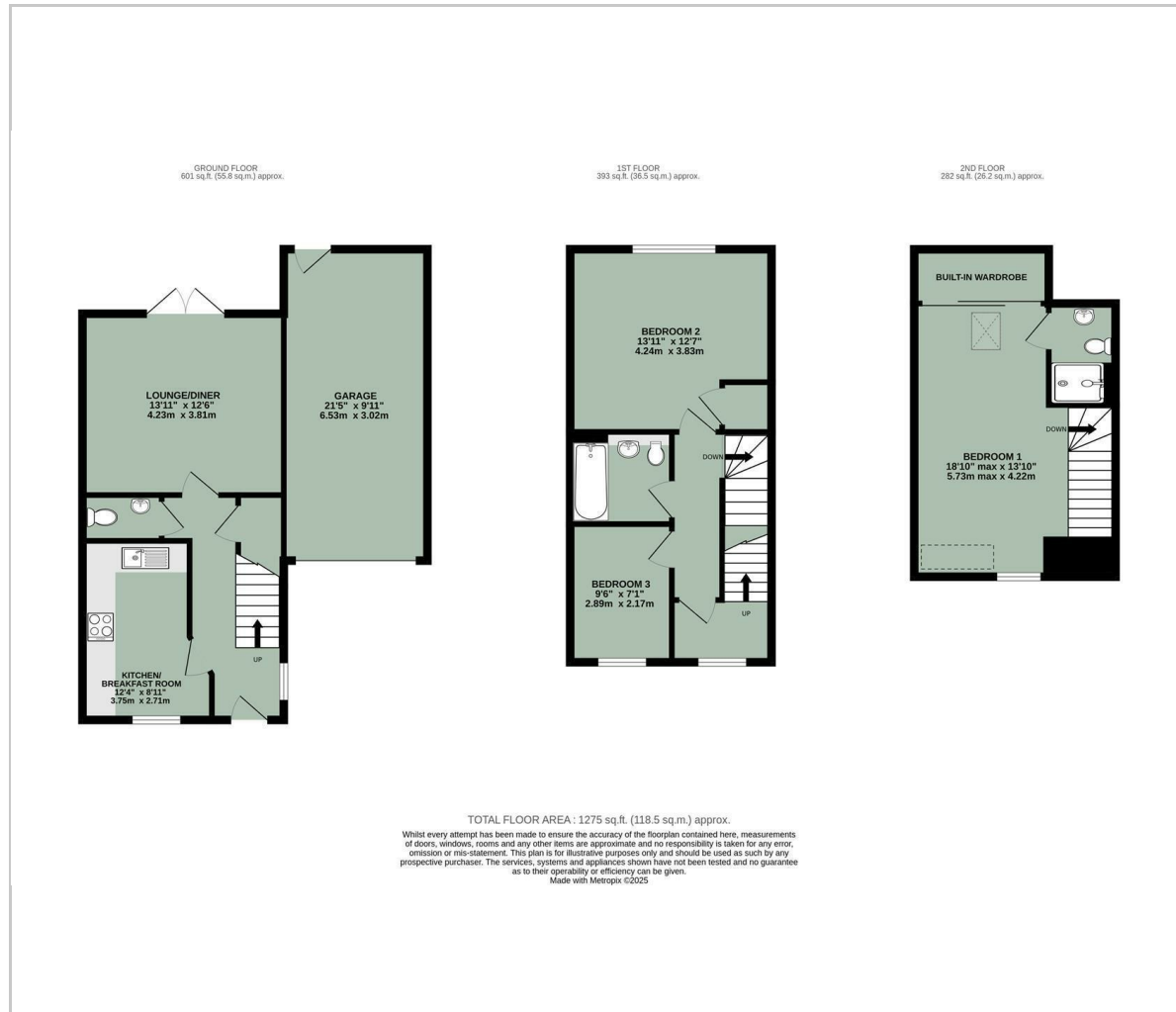


- AVAILABLE FROM EARLY DECEMBER 2025
- THREE BEDROOM FAMILY HOME
- WELL-PRESENTED THROUGHOUT
- EN-SUITE TO THE MASTER BEDROOM
- ARRANGED OVER THREE FLOORS
- CLOAKROOM
- OFF-STREET PARKING & GARAGE
- SOUTH-WEST FACING REAR GARDEN
- PART FURNISHED



Energy Efficiency Graph

## Floor Plan



## Area Map



## Viewing

Please contact our In House Sales & Lettings Office on 01491 839999 opt.1 if you wish to arrange a viewing appointment for this property or require further information.

These particulars, whilst believed to be accurate are set out as a general outline only for guidance and do not constitute any part of an offer or contract. Intending purchasers should not rely on them as statements of representation of fact, but must satisfy themselves by inspection or otherwise as to their accuracy. No person in this firm's employment has the authority to make or give any representation or warranty in respect of the property.

28 St Martins Street, Wallingford, Oxfordshire, OX10 0AL  
Tel: 01491 839999 opt.1 Email: [sales@inhouseestateagents.co.uk](mailto:sales@inhouseestateagents.co.uk) [www.inhouseestateagents.co.uk](http://www.inhouseestateagents.co.uk)