

WE VALUE



YOUR HOME



Oxford Crescent, Didcot
£325,000



Offered with no onward chain, this well-presented three-bedroom home is packed with desirable features and ideal for a range of buyers.

Set in a popular location near Didcot Girls' School, the property boasts a south-west facing rear garden, ample off-street parking, and a partially converted double garage—perfect for additional storage, a home office, or hobby space.

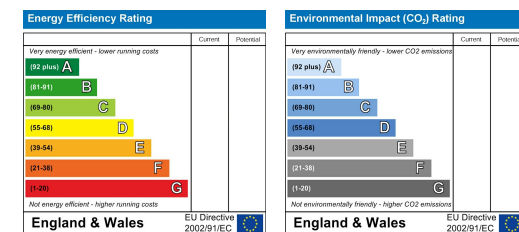
Inside, the ground floor offers a lounge opening into the bright conservatory, creating a great flow for everyday living and entertaining. There's also a modern kitchen and a downstairs shower room.

Upstairs, you'll find three bedrooms—providing comfortable accommodation for families, guests, or a home workspace.



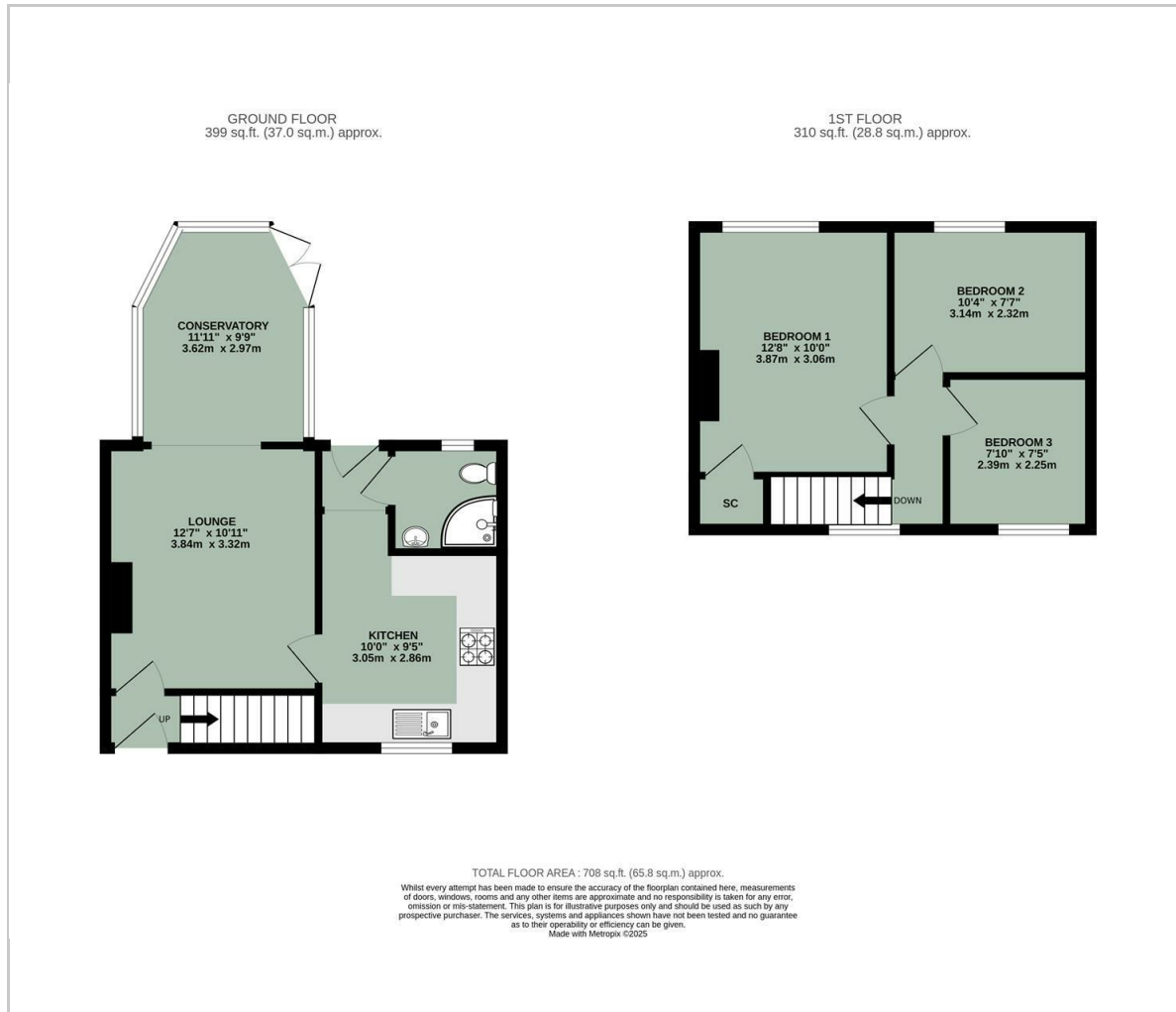


- SOUTH-WEST FACING REAR GARDEN
- NO ONWARD CHAIN
- PARTIALLY CONVERTED DOUBLE GARAGE
- AMPLE OFF-STREET PARKING
- THREE BEDROOMS
- LOUNGE, KITCHEN & CONSERVATORY
- WELL-PRESENTED THROUGHOUT



Energy Efficiency Graph

Floor Plan



Area Map



Viewing

Please contact our In House Sales & Lettings Office on 01491 839999 opt.1 if you wish to arrange a viewing appointment for this property or require further information.

These particulars, whilst believed to be accurate are set out as a general outline only for guidance and do not constitute any part of an offer or contract. Intending purchasers should not rely on them as statements of representation of fact, but must satisfy themselves by inspection or otherwise as to their accuracy. No person in this firm's employment has the authority to make or give any representation or warranty in respect of the property.

28 St Martins Street, Wallingford, Oxfordshire, OX10 0AL

Tel: 01491 839999 opt.1 Email: sales@inhouseestateagents.co.uk www.inhouseestateagents.co.uk