

WE VALUE



YOUR HOME



Brewhouse Yard, Wallingford
£1,250 Per Month



Available from Mid-August for Long-Term Let, Unfurnished

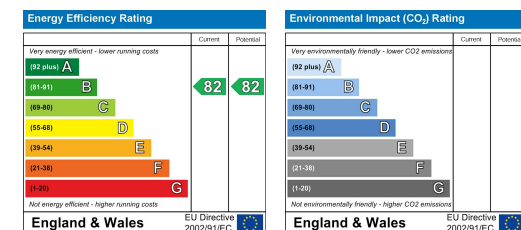
This first-floor apartment at Brevhouse Yard combines original period features with modern convenience. The spacious open-plan kitchen, dining, and living area is complemented by fully integrated appliances, creating a stylish and practical space. The double bedroom includes a built-in wardrobe, while the contemporary three-piece bathroom adds to the home's comfort.

Situated in the heart of Wallingford, the apartment is just a short walk from shops, restaurants, and green spaces. Excellent transport links connect to nearby villages, as well as Reading and Oxford for onward travel.



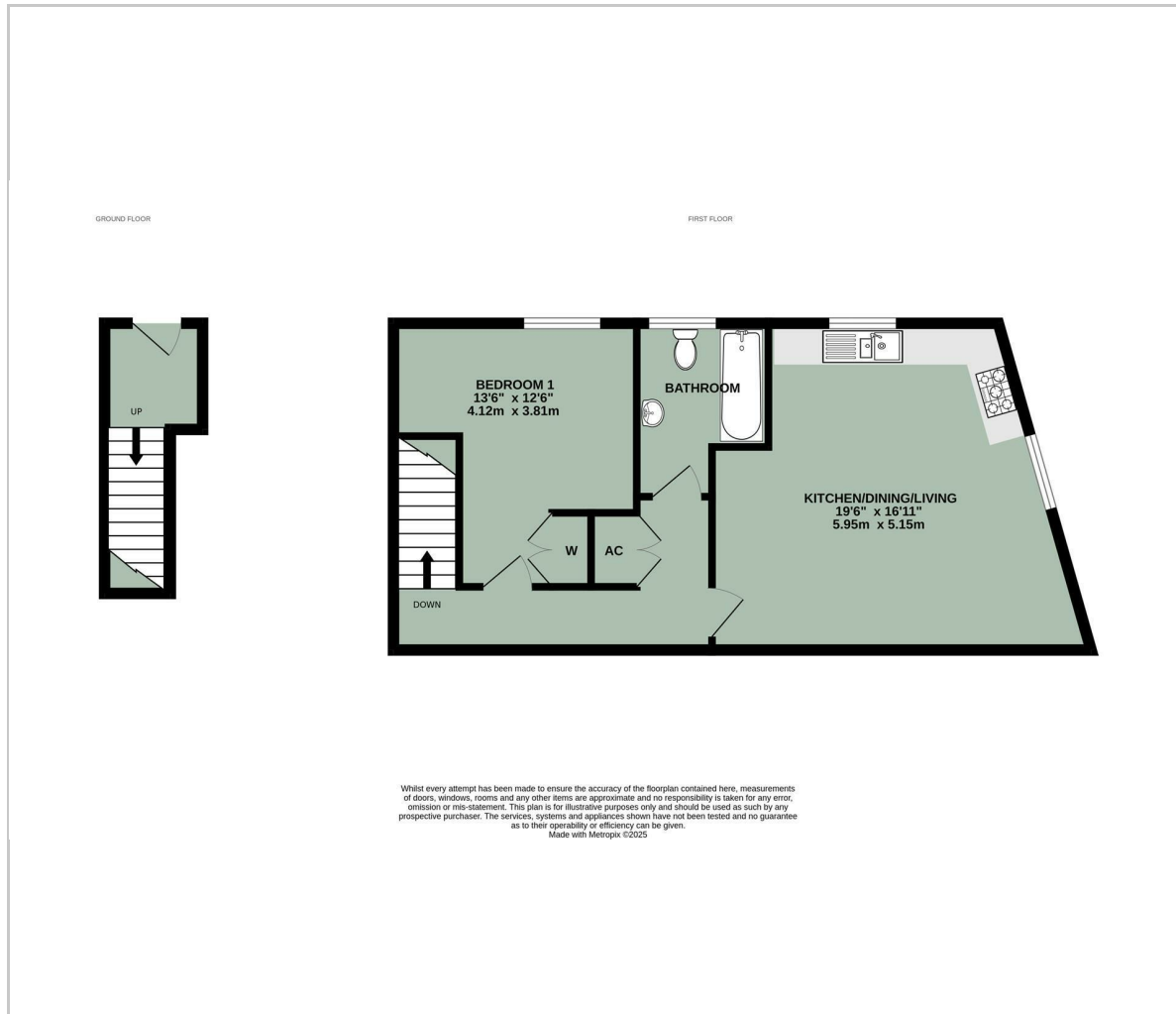


- AVAILABLE FROM MID-AUGUST FOR LONG-TERM LET, UNFURNISHED
- WALLINGFORD TOWN CENTRE LOCATION
- FIRST FLOOR APARTMENT
- PREMIUM NOBILIA KITCHEN WITH INTEGRATED APPLIANCES
- KARNDÉAN FLOORING IN KITCHEN/LIVING AREA
- ORIGINAL FEATURES THROUGHOUT
- BEAUTIFUL MEWS COURTYARD SETTING
- DOUBLE BEDROOM WITH BUILT-IN WARDROBE

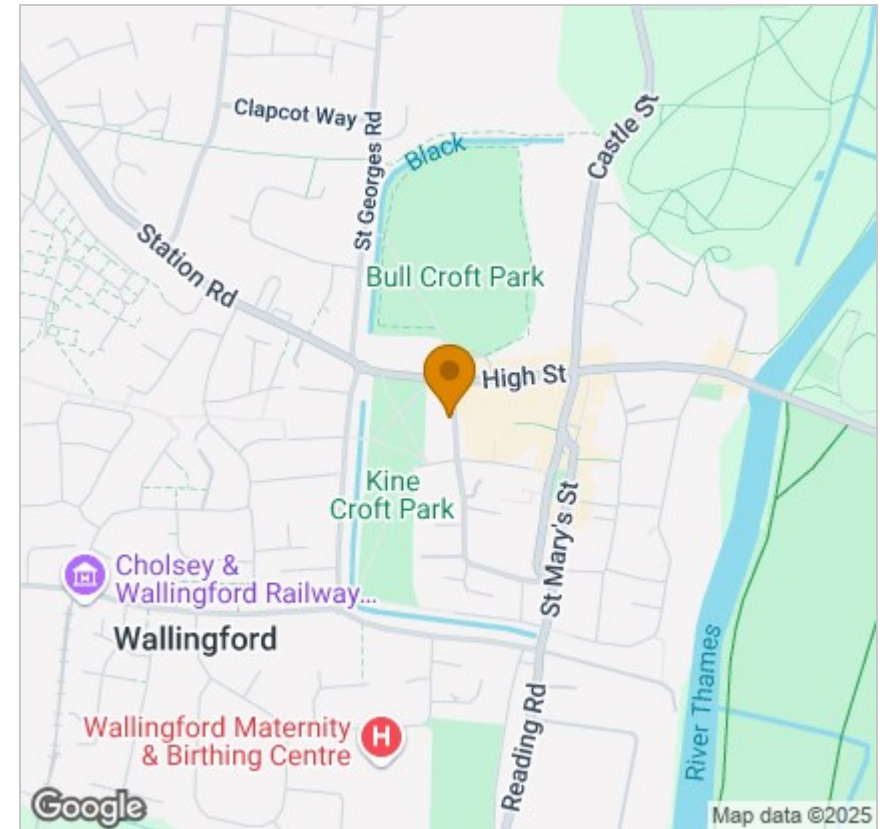


Energy Efficiency Graph

Floor Plan



Area Map



Viewing

Please contact our In House Sales & Lettings Office on 01491 839999 opt.1 if you wish to arrange a viewing appointment for this property or require further information.

These particulars, whilst believed to be accurate are set out as a general outline only for guidance and do not constitute any part of an offer or contract. Intending purchasers should not rely on them as statements of representation of fact, but must satisfy themselves by inspection or otherwise as to their accuracy. No person in this firm's employment has the authority to make or give any representation or warranty in respect of the property.

28 St Martins Street, Wallingford, Oxfordshire, OX10 0AL
Tel: 01491 839999 opt.1 Email: sales@inhouseestateagents.co.uk www.inhouseestateagents.co.uk