

WE VALUE



YOUR HOME



Old Norse Way, Watlington  
Offers Over £350,000





Offered with no onward chain and immaculately presented throughout, this stylish two-bedroom home offers comfortable and modern living. The ground floor features a spacious lounge, a well-equipped kitchen/diner with integrated appliances, a separate utility area, and a convenient cloakroom. Upstairs, there are two double bedrooms, one with an en-suite shower room, along with a contemporary family bathroom serving the second bedroom.

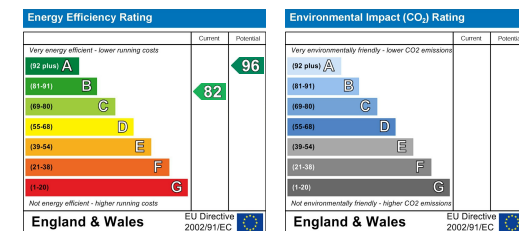
Outside, the property boasts a south-facing rear garden, ideal for relaxing or entertaining, and off-street parking for two vehicles.





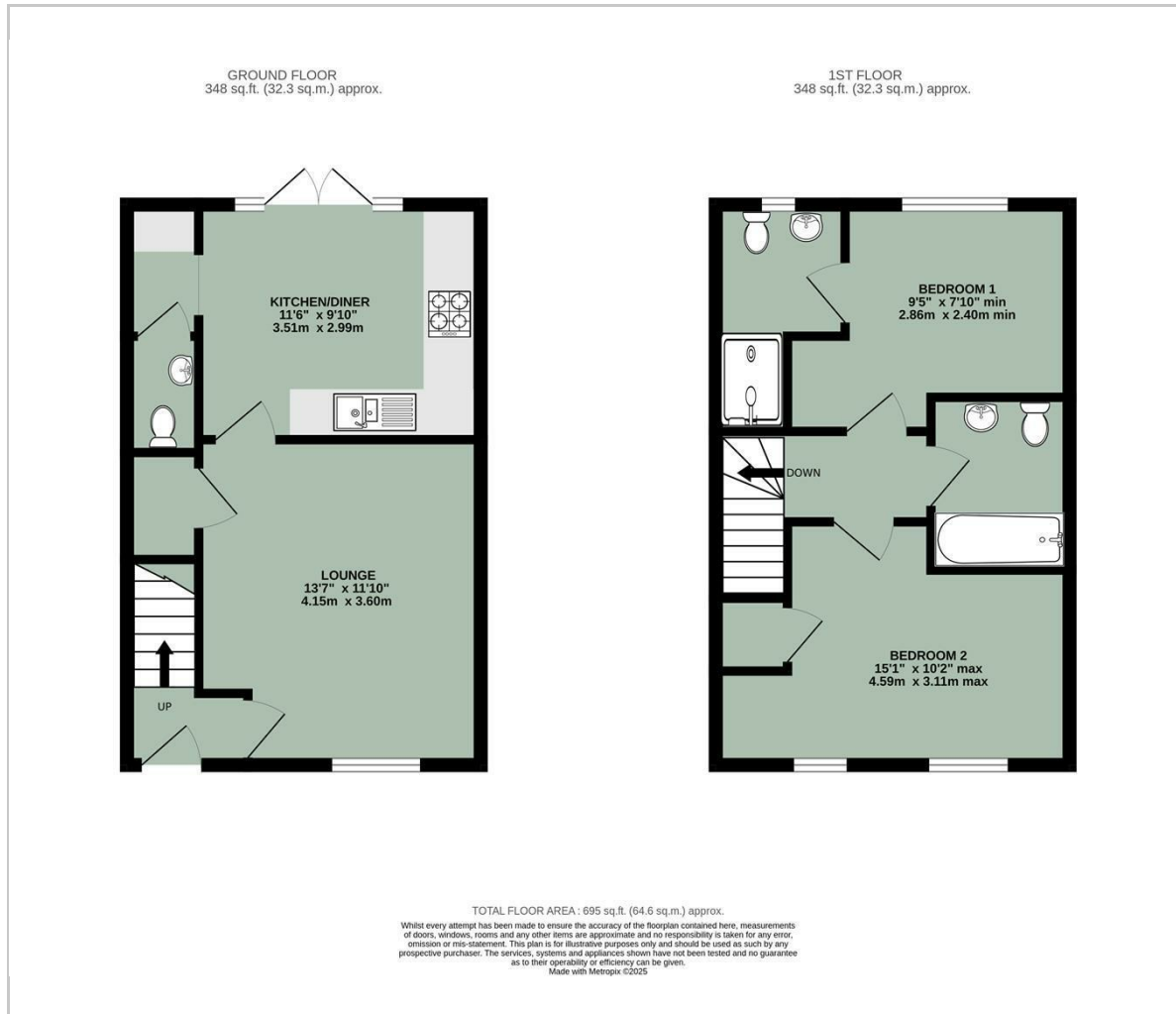


- OFFERED WITH NO ONWARD CHAIN
- IMMACULATLY PRESENTED THROUGHOUT
- SOUTH FACING REAR GARDEN
- KITCHEN/DINER WITH INTEGRATED APPLIANCES & UTILITY AREA
- TWO DOUBLE BEDROOMS
- OFF-STREET PARKING FOR TWO VEHICLES
- EN-SUITE & FAMILY BATHROOM
- DOWNSTAIRS CLOAKROOM

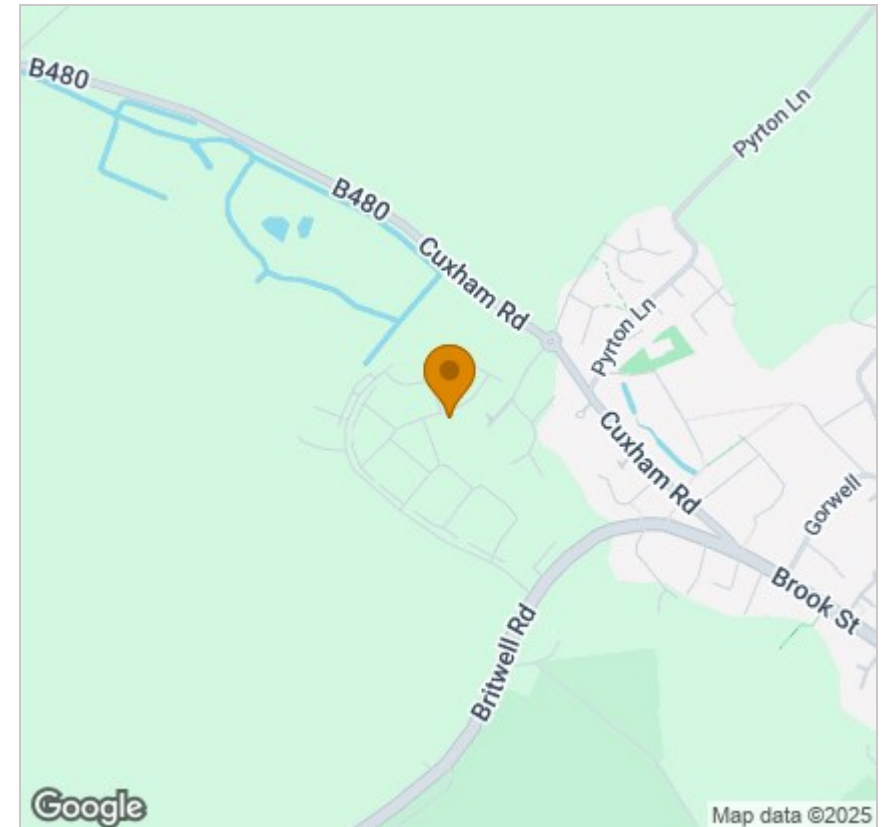


Energy Efficiency Graph

## Floor Plan



## Area Map



## Viewing

Please contact our In House Sales & Lettings Office on 01491 839999 opt.1  
if you wish to arrange a viewing appointment for this property or require further information.

These particulars, whilst believed to be accurate are set out as a general outline only for guidance and do not constitute any part of an offer or contract. Intending purchasers should not rely on them as statements of representation of fact, but must satisfy themselves by inspection or otherwise as to their accuracy. No person in this firm's employment has the authority to make or give any representation or warranty in respect of the property.

28 St Martins Street, Wallingford, Oxfordshire, OX10 0AL  
Tel: 01491 839999 opt.1 Email: [sales@inhouseestateagents.co.uk](mailto:sales@inhouseestateagents.co.uk) [www.inhouseestateagents.co.uk](http://www.inhouseestateagents.co.uk)