

WE VALUE



YOUR HOME



Blewbury Court, Cholsey
Offers Over £325,000



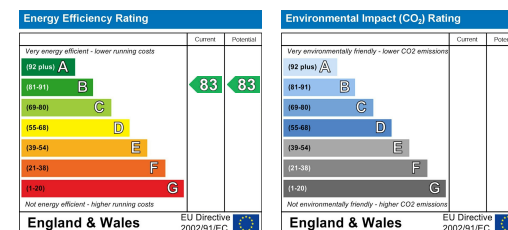
Set within Cholsey Meadows, this elegant first-floor apartment offers spacious and versatile living with picturesque views over communal grounds and open countryside. Boasting high ceilings the open-plan kitchen, dining, and living area is both light-filled and inviting, complete with integrated appliances and ample room for entertaining.

The property features two generous double bedrooms, both with built-in wardrobes, a separate study ideal for home working, a useful utility cupboard, and a contemporary four-piece family bathroom. Additional benefits include allocated off-street parking for one vehicle and no onward chain, making this well-presented apartment an appealing choice for a range of buyers.



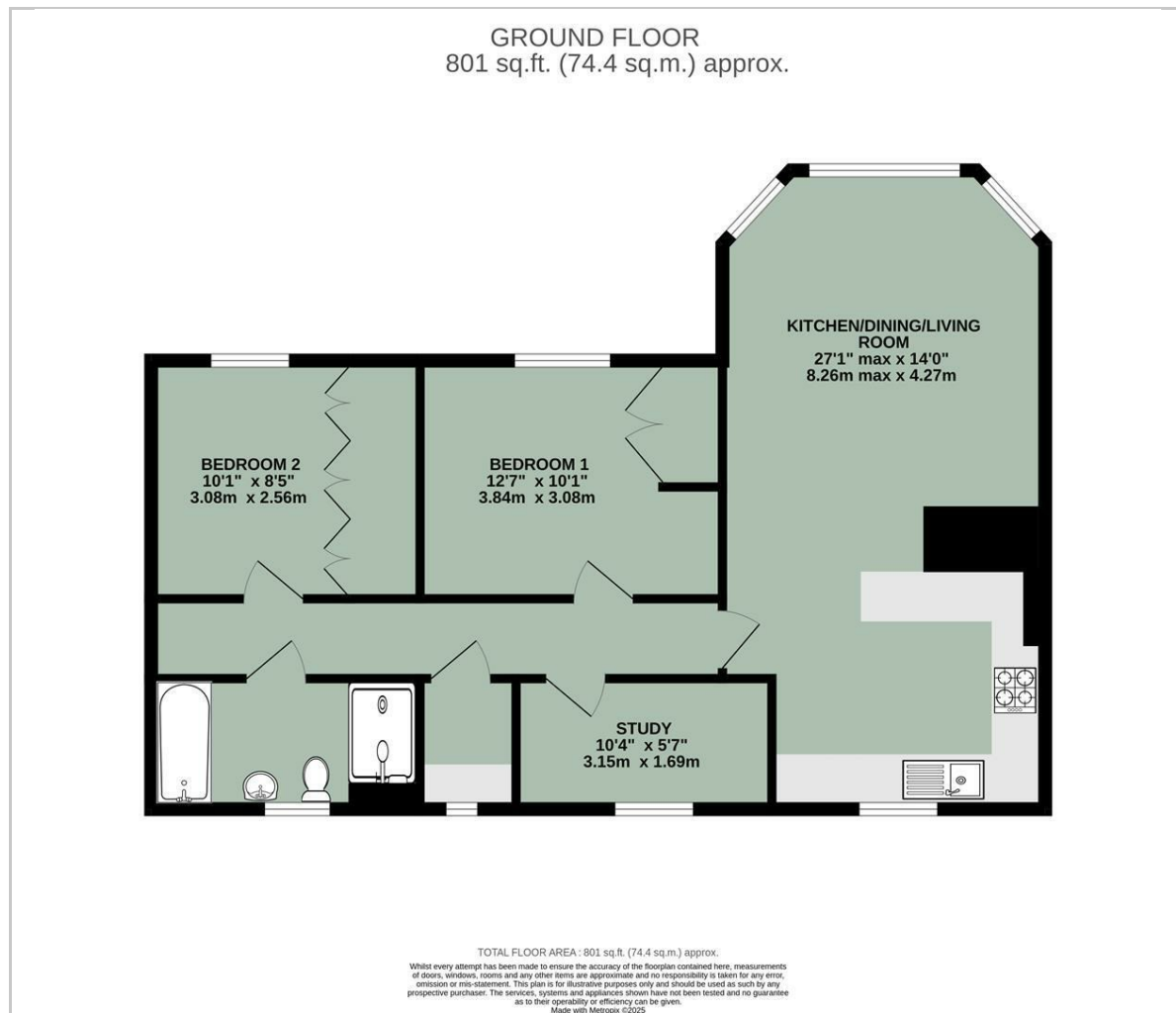


- NO ONWARD CHAIN
- OPEN PLAN
KITCHEN/DINING/LIVING
ROOM
- TWO DOUBLE BEDROOMS
WITH BUILT-IN WARDROBES
- STUDY & UTILITY
ROOM/CUPBOARD
- VIEWS OVER COMMUNAL
GROUNDS & COUNTRYSIDE
- ALLOCATED OFF-STREET
PARKING FOR ONE
VEHICLES
- WELL-PRESENTED
THROUGHOUT

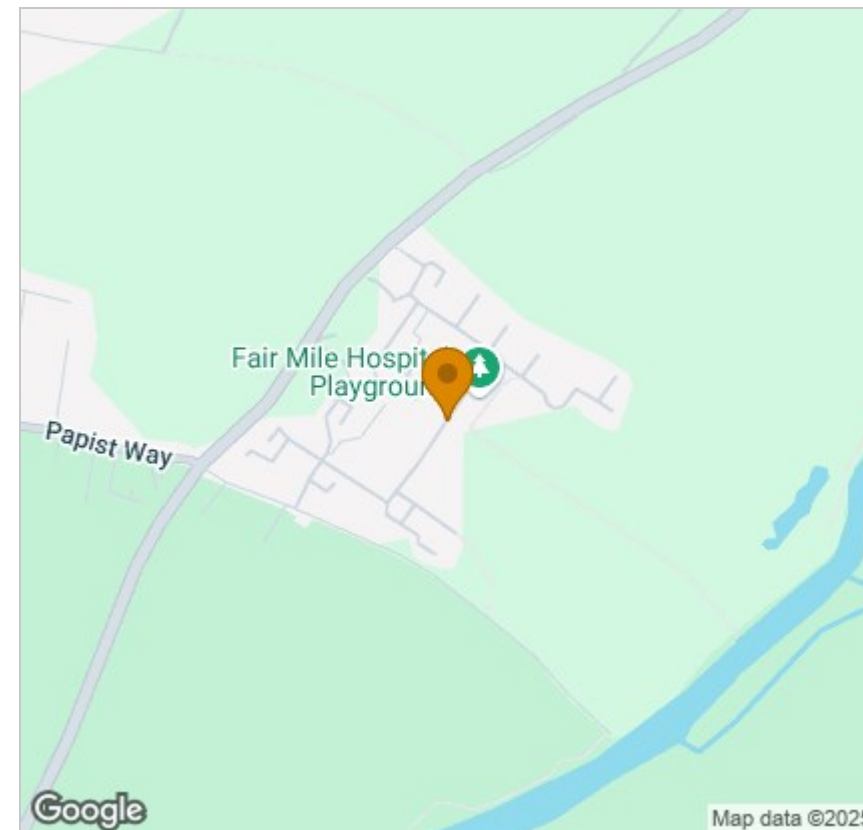


Energy Efficiency Graph

Floor Plan



Area Map



Viewing

Please contact our In House Sales & Lettings Office on 01491 839999 opt.1
if you wish to arrange a viewing appointment for this property or require further information.

These particulars, whilst believed to be accurate are set out as a general outline only for guidance and do not constitute any part of an offer or contract. Intending purchasers should not rely on them as statements of representation of fact, but must satisfy themselves by inspection or otherwise as to their accuracy. No person in this firm's employment has the authority to make or give any representation or warranty in respect of the property.

28 St Martins Street, Wallingford, Oxfordshire, OX10 0AL
Tel: 01491 839999 opt.1 Email: sales@inhouseestateagents.co.uk www.inhouseestateagents.co.uk