

WE VALUE



YOUR HOME



Bonnars Mead, Benson
£375,000

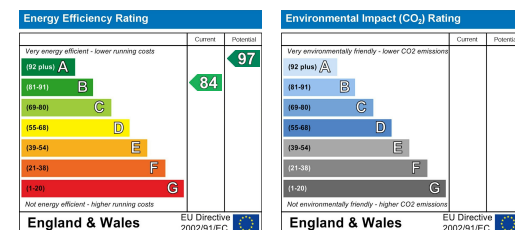


Situated on the popular Bensons Cala development, this well-presented two-bedroom semi-detached home offers modern living within walking distance of local shops, pubs, and amenities. The ground floor features a stylish kitchen with integrated appliances, and a generously sized lounge with French doors opening to the east-facing rear garden. Upstairs are two double bedrooms and a contemporary family bathroom. Externally, the property benefits from an enclosed rear garden and off-street parking for two vehicles.



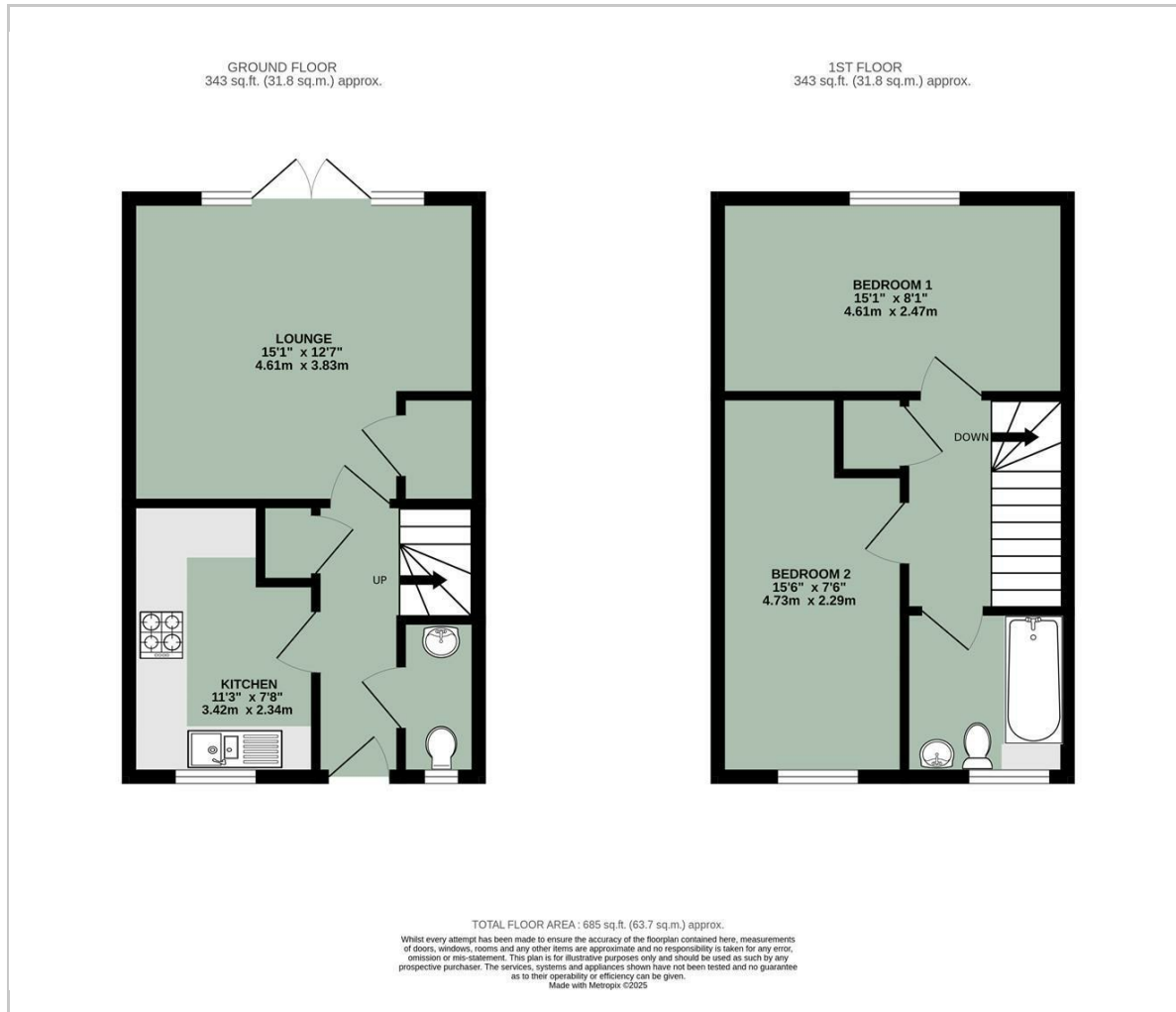


- MODERN SEMI-DETACHED PROPERTY
- ENCLOSED EAST FACING REAR GARDEN
- KITCHEN WITH INTEGRATED APPLIANCES
- GENEROUSLY SIZED LOUNGE WITH FRENCH DOORS TO REAR GARDEN
- OFF-STREET PARKING FOR TWO VEHICLES
- WALKING DISTANCE TO PUBS, SHOPS & AMENITIES
- DOWNSTAIRS CLOAKROOM

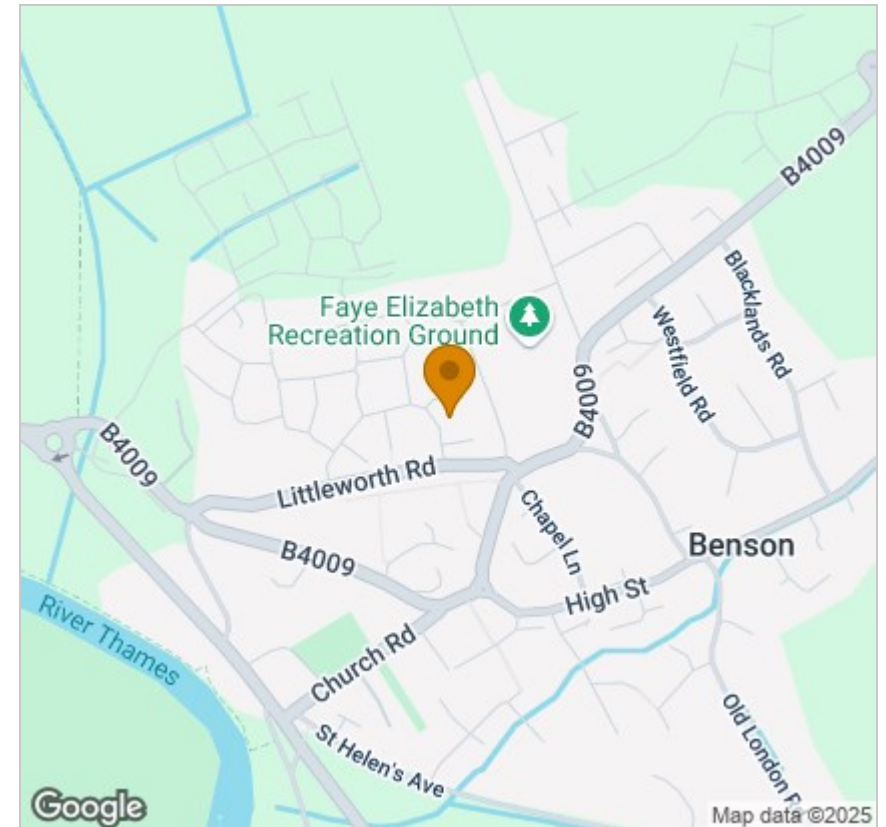


Energy Efficiency Graph

Floor Plan



Area Map



Viewing

Please contact our In House Sales & Lettings Office on 01491 839999 opt.1
if you wish to arrange a viewing appointment for this property or require further information.

These particulars, whilst believed to be accurate are set out as a general outline only for guidance and do not constitute any part of an offer or contract. Intending purchasers should not rely on them as statements of representation of fact, but must satisfy themselves by inspection or otherwise as to their accuracy. No person in this firm's employment has the authority to make or give any representation or warranty in respect of the property.

28 St Martins Street, Wallingford, Oxfordshire, OX10 0AL
Tel: 01491 839999 opt.1 Email: sales@inhouseestateagents.co.uk www.inhouseestateagents.co.uk