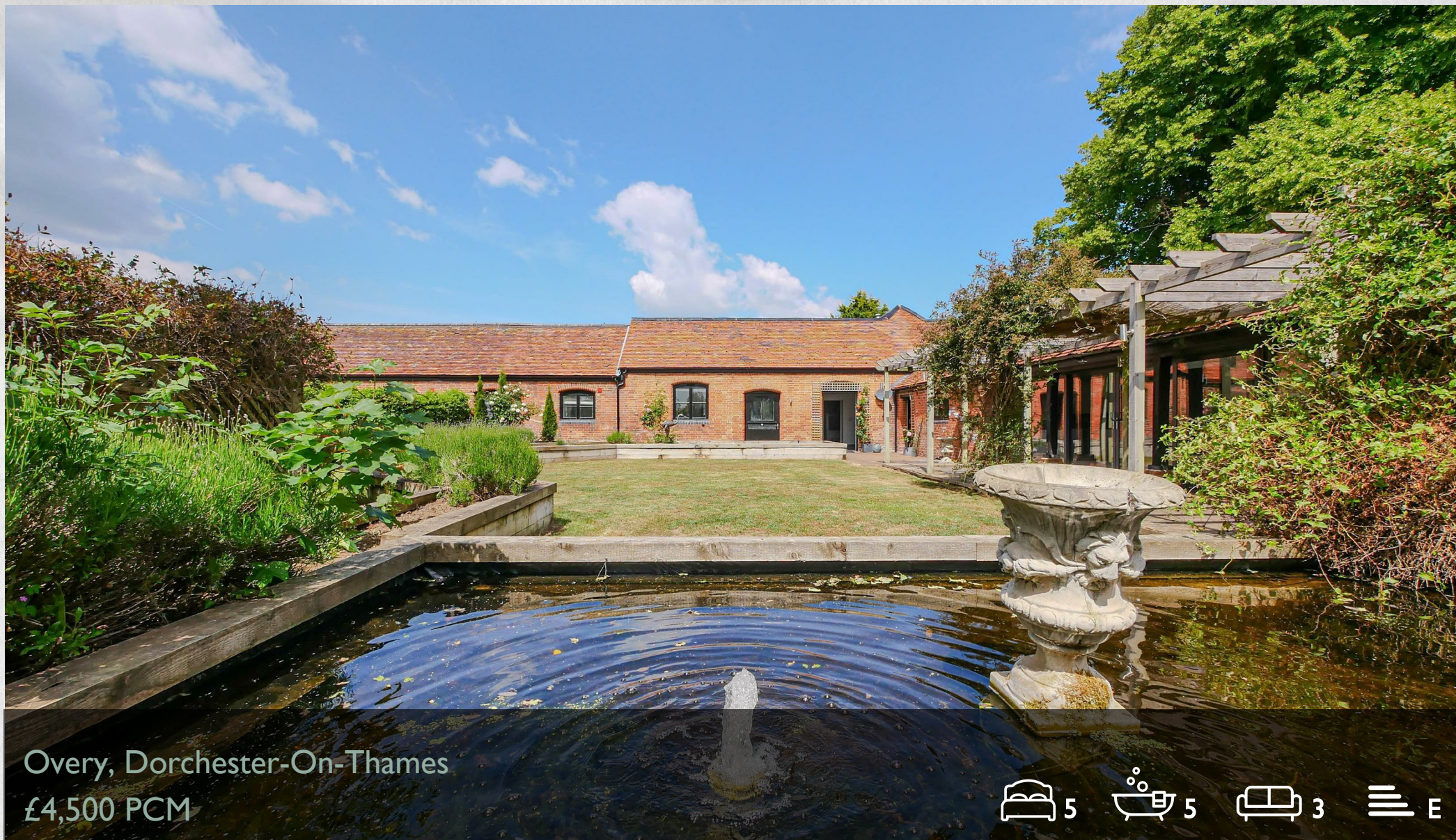


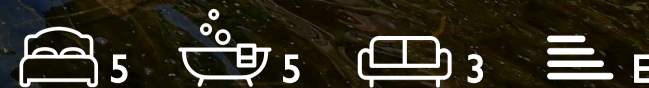
WE VALUE



YOUR HOME



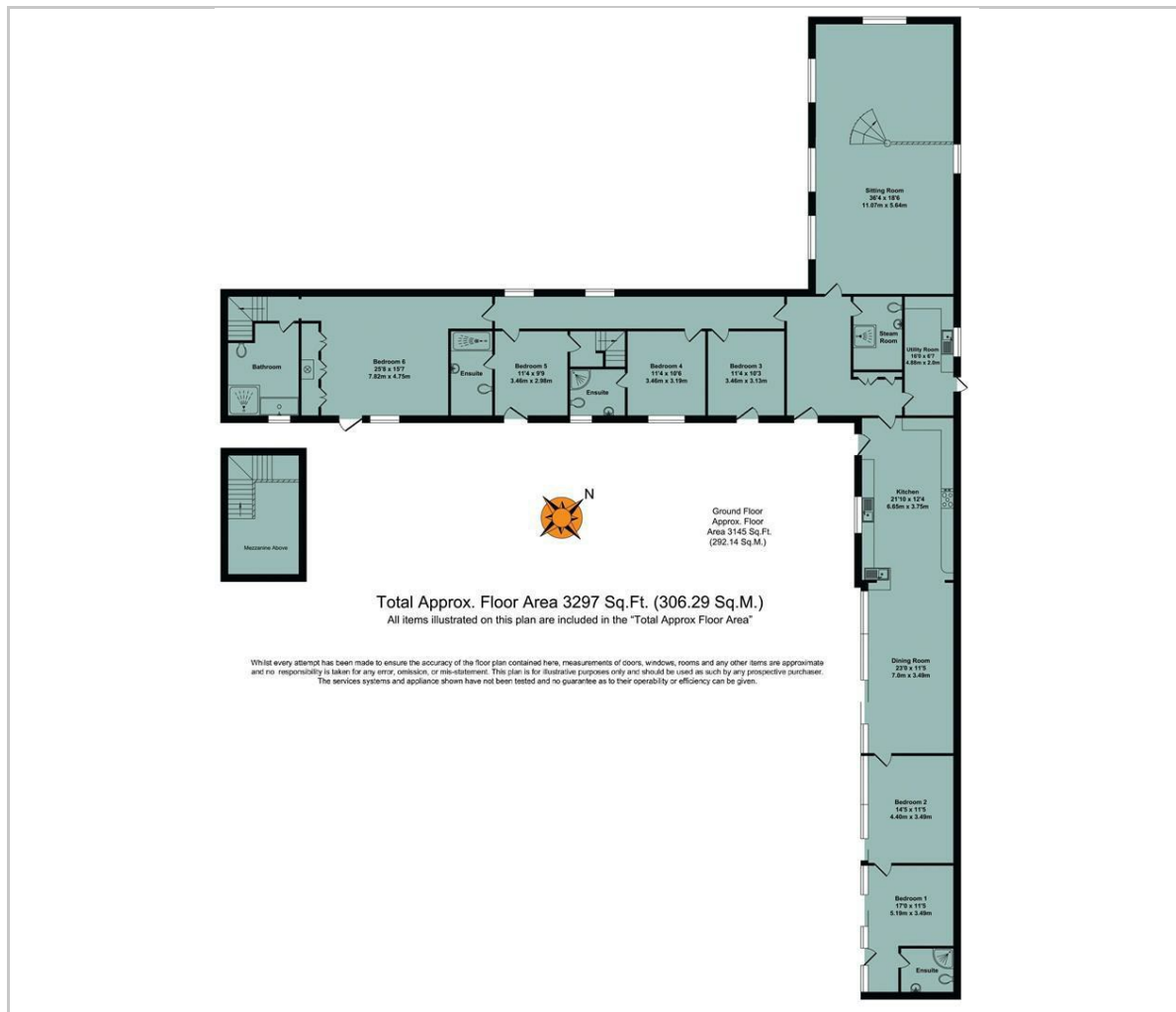
Overy, Dorchester-On-Thames
£4,500 PCM



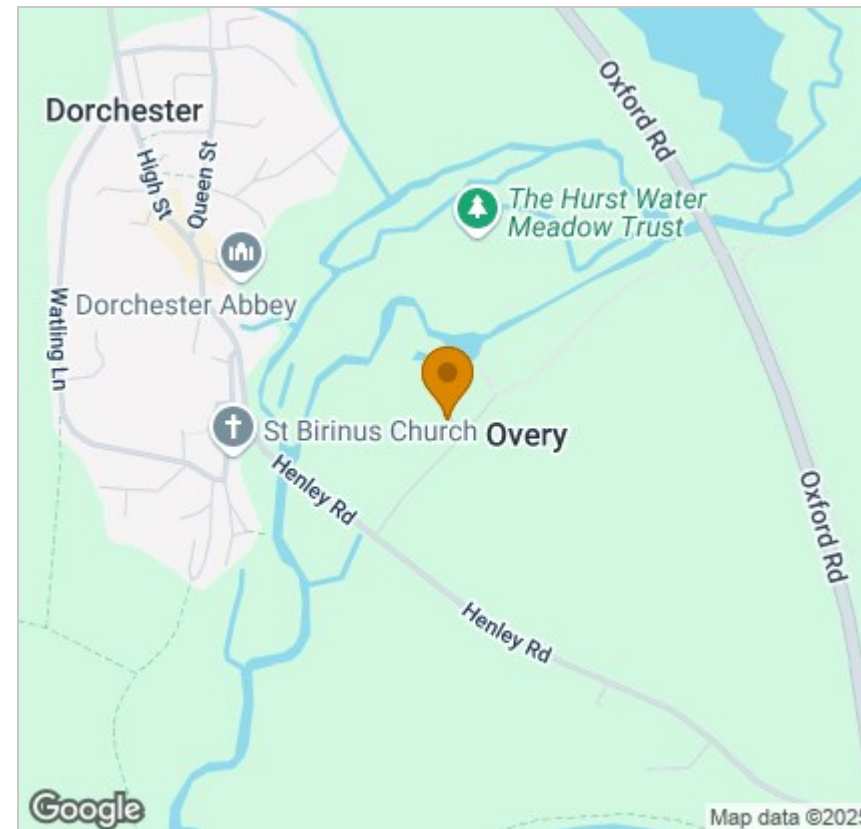
*Available Immediately for Long-Term Let,
Unfurnished* Located within the hamlet of Overy, this luxurious and contemporary barn conversion has had no expense spared creating a versatile home with a truly modern interior yet still retaining its original charm. Full of character with high vaulted ceilings, light and airy rooms, bespoke furnishings and Angel Matica art murals. With open views to countryside and farm land, this unique five-bedroom home takes you on a journey from the landscaped entrance throughout the three wings which incorporate an open plan living and guest wing, the main lounge/cinema room and a bedroom wing complete with mezzanine levels and en-suites. This gem of a property really does stand out from the crowd!



Floor Plan



Area Map



Viewing

Please contact our In House Sales & Lettings Office on 01491 839999 opt.1 if you wish to arrange a viewing appointment for this property or require further information.

These particulars, whilst believed to be accurate are set out as a general outline only for guidance and do not constitute any part of an offer or contract. Intending purchasers should not rely on them as statements of representation of fact, but must satisfy themselves by inspection or otherwise as to their accuracy. No person in this firm's employment has the authority to make or give any representation or warranty in respect of the property.

28 St Martins Street, Wallingford, Oxfordshire, OX10 0AL
Tel: 01491 839999 opt.1 Email: sales@inhouseestateagents.co.uk www.inhouseestateagents.co.uk