

WE VALUE



YOUR HOME



Charles Road, Cholsey
£675,000

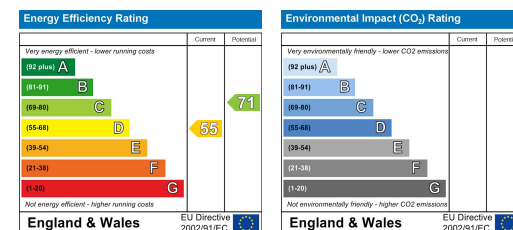


Detached and extended, this four-bedroom bungalow offers a perfect blend of character and comfort. Located along a no through road, this spacious home features a beautiful kitchen/diner and lounge, both with underfloor heating and bi-folding doors opening up the space to the landscaped rear garden complete with a raised decked seating area and plenty of lawn. Within the garden, the detached office/store room is perfect for those working from home or just wanting an additional space to accommodate their hobby! Featuring four bedrooms, one with a mezzanine level, a family bathroom, en-suite and cloakroom, and off-street parking and a carport. If you are looking to settle down in this popular village, this property offers endless possibilities for you to create your own haven thanks to its room sizes and flexible layout.



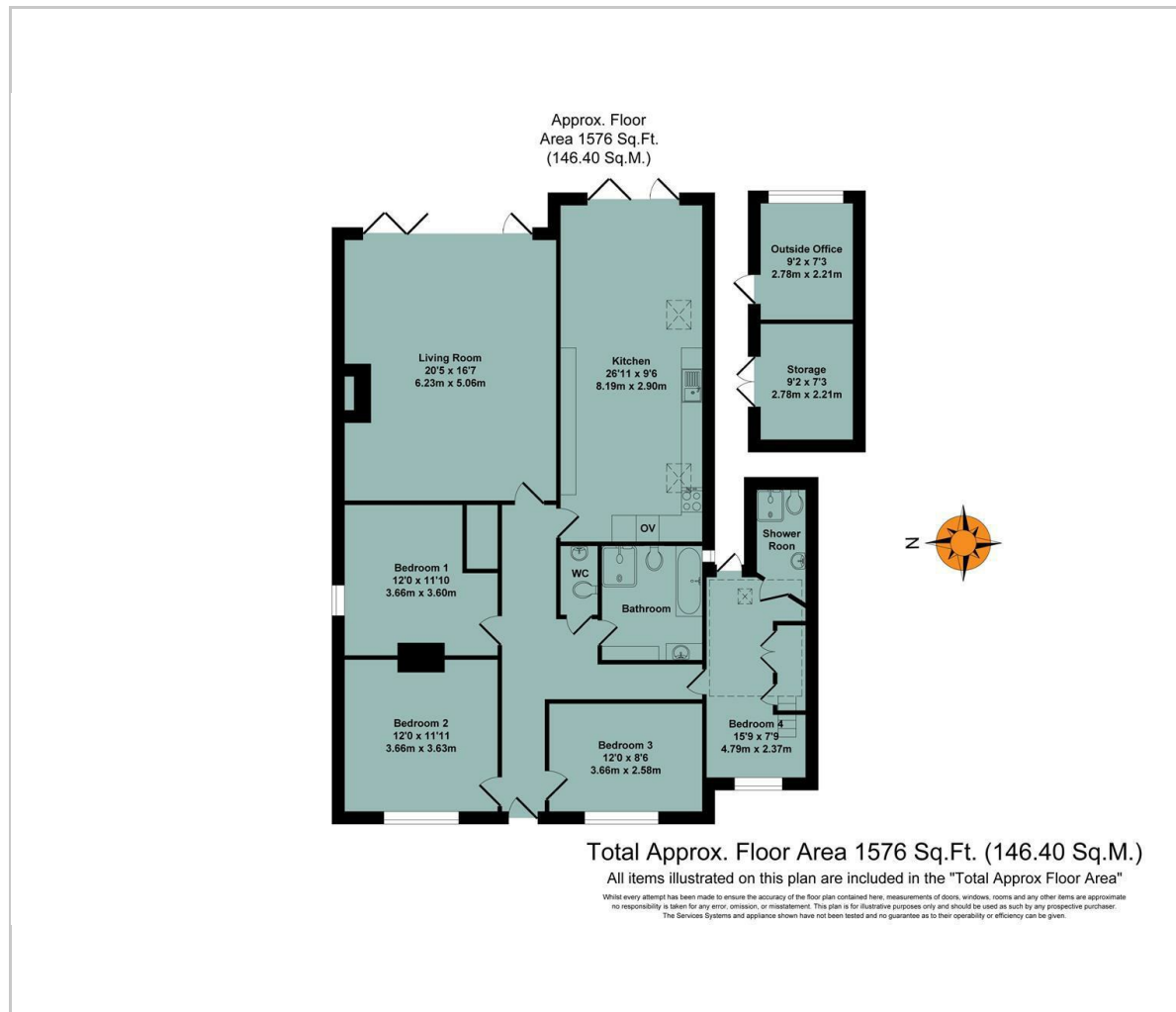


- DETACHED & EXTENDED BUNGALOW
- 26FT KITCHEN/DINER
- BI-FOLDING DOORS
- LANDSCAPED REAR GARDEN
- FOUR DOUBLE BEDROOMS
- FAMILY BATHROOM, EN-SUITE & CLOAKROOM
- GARDEN OFFICE/STUDIO
- OFF-STREET PARKING & CARPORT
- OPEN FIREPLACE TO LOUNGE
- MEZZANINE SNUG/STORAGE LEVEL



Energy Efficiency Graph

Floor Plan



Area Map



Viewing

Please contact our In House Sales & Lettings Office on 01491 839999 opt.1
if you wish to arrange a viewing appointment for this property or require further information.

These particulars, whilst believed to be accurate are set out as a general outline only for guidance and do not constitute any part of an offer or contract. Intending purchasers should not rely on them as statements of representation of fact, but must satisfy themselves by inspection or otherwise as to their accuracy. No person in this firm's employment has the authority to make or give any representation or warranty in respect of the property.

28 St Martins Street, Wallingford, Oxfordshire, OX10 0AL
Tel: 01491 839999 opt.1 Email: sales@inhouseestateagents.co.uk www.inhouseestateagents.co.uk