

WE VALUE



YOUR HOME



Oxford Road, Benson
£3,250 Per Month

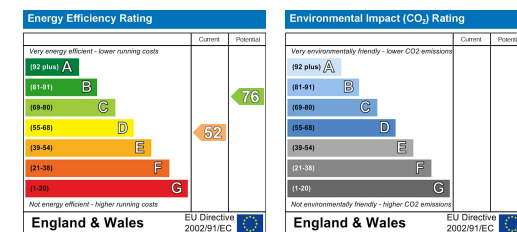


Available from May 2025 for Long-Term Let, Part-Furnished Welcome to 'Jessamine Cottage'... Set back from the road, this substantial detached family home offers a wealth of homely features and a versatile layout to accommodate a self-contained annexe to the first floor if desired. Well-presented, this generous home benefits from four reception rooms including a 22ft drawing room, a kitchen/breakfast room and a separate lounge and dining room, five double bedrooms with an en-suite to the master, a family bathroom, an additional shower room & kitchenette to the first floor and a beautifully maintained, mature rear garden. With ample off-street parking and a double garage, this period property offers an incredible forever home for a family of all generations to enjoy for years to come.



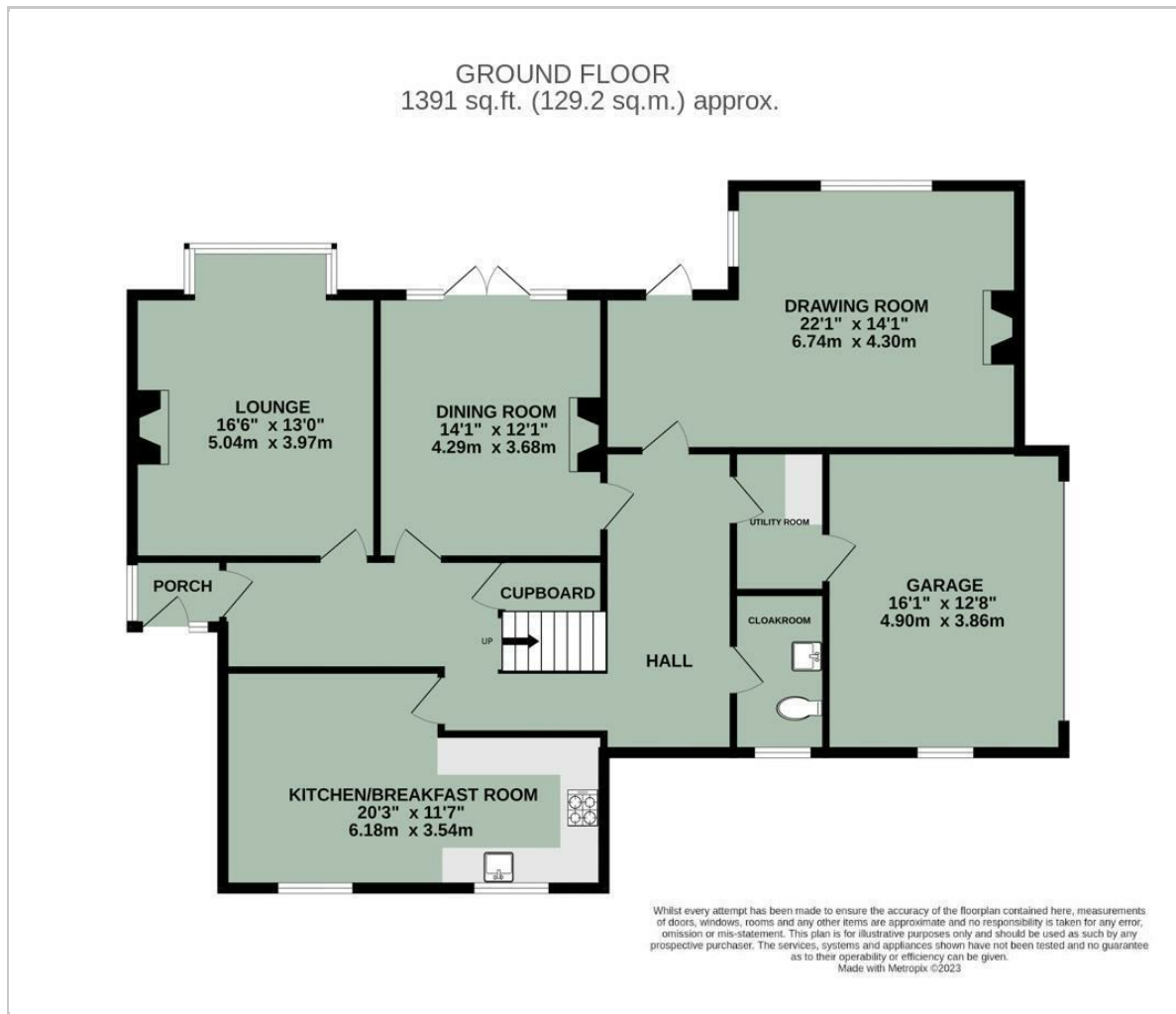


-
- A large, two-story yellow house with a red-tiled roof. The house has multiple windows, some with white frames and others with dark frames. A large tree with dark foliage is on the left side of the house. In the foreground, there is a hammock with a colorful striped pattern. The garden area includes a table with a patterned tablecloth and several blue chairs. The house is surrounded by greenery and flowers, including purple wisteria hanging over the porch.

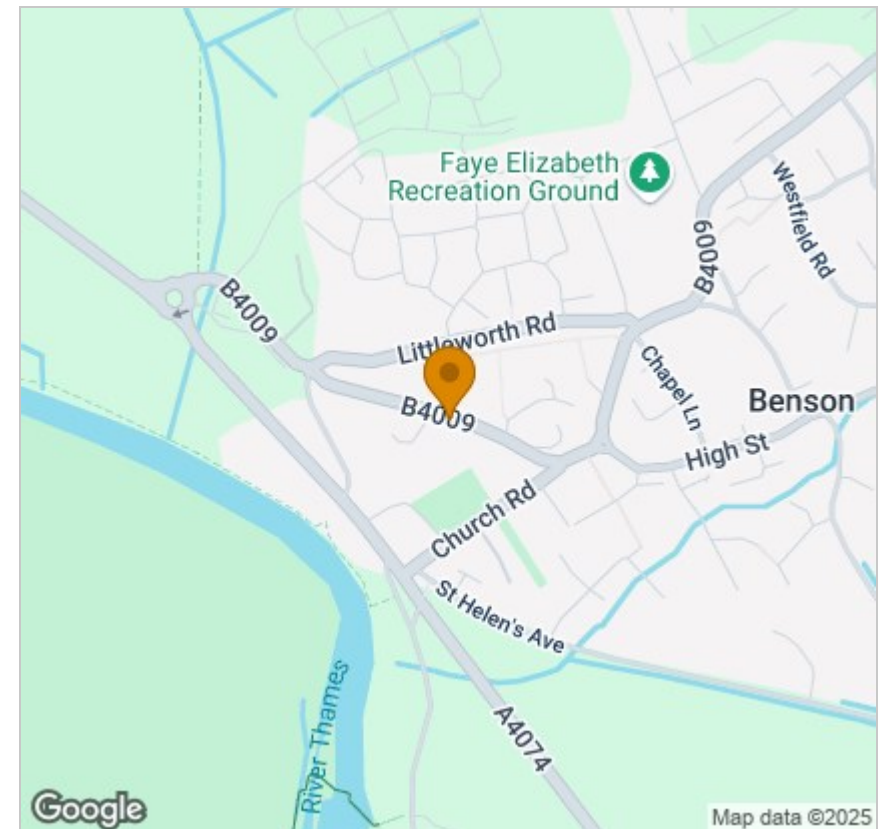


Energy Efficiency Graph

Floor Plan



Area Map



Viewing

Please contact our In House Sales & Lettings Office on 01491 839999 opt.1
if you wish to arrange a viewing appointment for this property or require further information.

These particulars, whilst believed to be accurate are set out as a general outline only for guidance and do not constitute any part of an offer or contract. Intending purchasers should not rely on them as statements of representation of fact, but must satisfy themselves by inspection or otherwise as to their accuracy. No person in this firm's employment has the authority to make or give any representation or warranty in respect of the property.

28 St Martins Street, Wallingford, Oxfordshire, OX10 0AL
Tel: 01491 839999 opt.1 Email: sales@inhouseestateagents.co.uk www.inhouseestateagents.co.uk