

WE VALUE



YOUR HOME



Brewhouse Yard, Wallingford
£1,400 Per Month



Available Immediately for Long-Term Let, Unfurnished

This beautifully presented two-bedroom home is set within the Brewhouse Yard development, offering modern living in the heart of Wallingford.

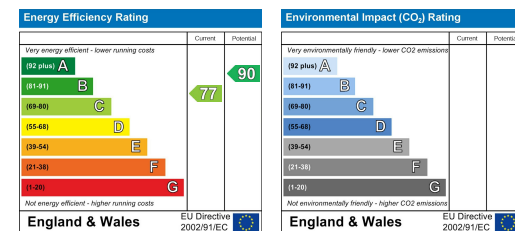
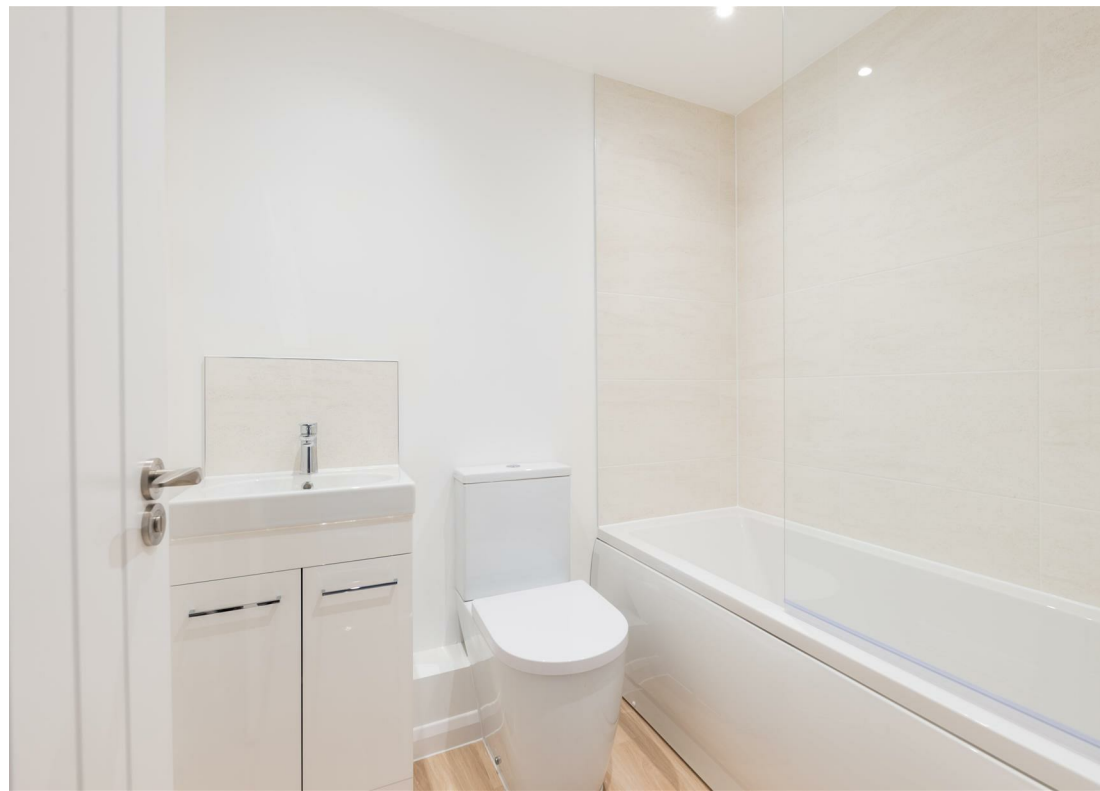
The contemporary Nobilia kitchen, fitted with integrated appliances, opens onto a spacious living area with French doors leading outside. A downstairs cloakroom completes the ground floor. Upstairs, two double bedrooms provide comfortable accommodation, with bedroom one featuring built-in wardrobes. A sleek three-piece bathroom serves the first floor.

Conveniently located close to shops, restaurants, and green spaces, the property also offers easy access to nearby villages, Reading, and Oxford.





- AVAILABLE IMMEDIATELY FOR LONG-TERM LET, UNFURNISHED
- PREMIUM NOBILIA KITCHEN WITH INTEGRATED APPLIANCES
- WALLINGFORD TOWN CENTRE LOCATION
- UNDERFLOOR HEATING TO GROUND FLOOR
- TWO DOUBLE BEDROOMS
- PRIVATE PATIO AREA
- EASY ACCESS TO OXFORD, READING, DIDCOT & HENLEY

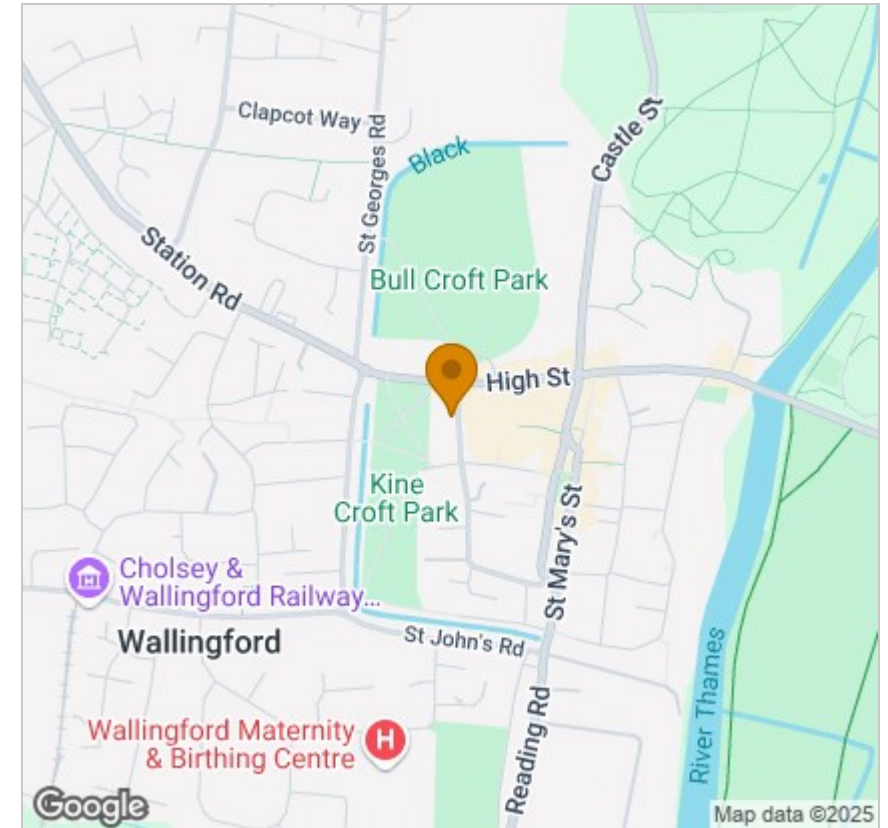


Energy Efficiency Graph

Floor Plan



Area Map



Viewing

Please contact our In House Sales & Lettings Office on 01491 839999 opt.1 if you wish to arrange a viewing appointment for this property or require further information.

These particulars, whilst believed to be accurate are set out as a general outline only for guidance and do not constitute any part of an offer or contract. Intending purchasers should not rely on them as statements of representation of fact, but must satisfy themselves by inspection or otherwise as to their accuracy. No person in this firm's employment has the authority to make or give any representation or warranty in respect of the property.

28 St Martins Street, Wallingford, Oxfordshire, OX10 0AL
Tel: 01491 839999 opt.1 Email: sales@inhouseestateagents.co.uk www.inhouseestateagents.co.uk