

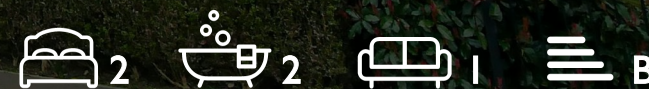
WE VALUE



YOUR HOME



Smith Court, Wallingford
Offers Over £250,000

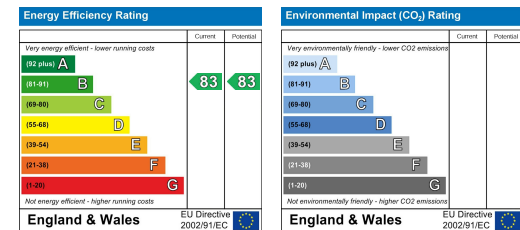


Coming to market with no onward chain and just short distance from the centre of Wallingford, this newly built, two-bedroom ground floor apartment is ready to move into. A dual aspect open-plan space provides a modern, well equipped kitchen with integrated appliances and good size living area, both double bedrooms, with en-suite to master. There is also the added benefit of an allocated parking space with plenty of visitor spaces.



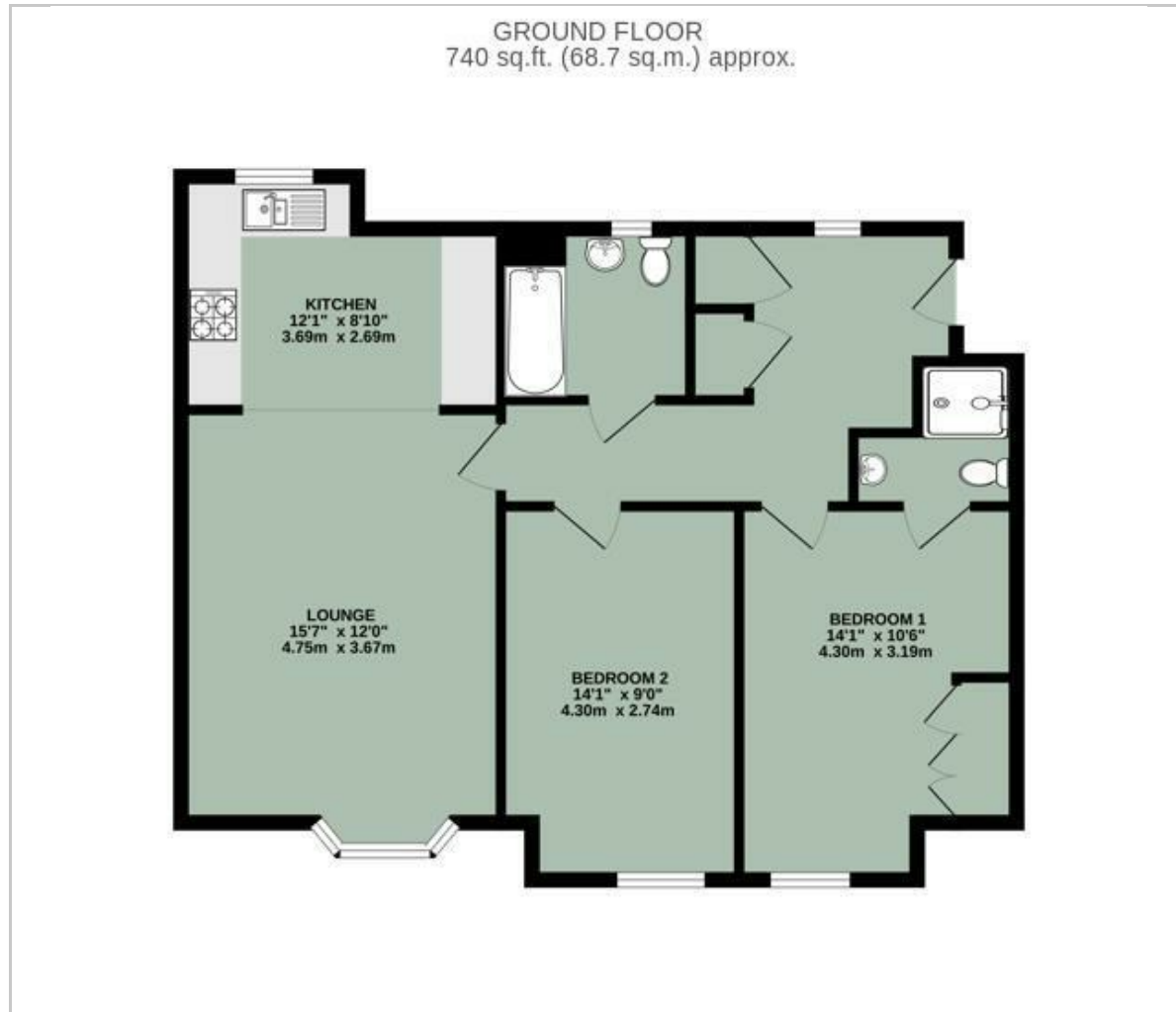


- NO ONWARD CHAIN
- MODERN GROUND FLOOR APARTMENT
- TWO DOUBLE BEDROOMS
- EN-SUITE TO PRINCIPLE BEDROOM
- ALLOCATED PARKING FOR ONE VEHICLE
- CLOSE TO WALLINGFORD TOWN CENTRE & AMENITIES



Energy Efficiency Graph

Floor Plan



Area Map



Viewing

Please contact our In House Sales & Lettings Office on 01491 839999 opt.1
if you wish to arrange a viewing appointment for this property or require further information.

These particulars, whilst believed to be accurate are set out as a general outline only for guidance and do not constitute any part of an offer or contract. Intending purchasers should not rely on them as statements of representation of fact, but must satisfy themselves by inspection or otherwise as to their accuracy. No person in this firm's employment has the authority to make or give any representation or warranty in respect of the property.

28 St Martins Street, Wallingford, Oxfordshire, OX10 0AL
Tel: 01491 839999 opt.1 Email: sales@inhouseestateagents.co.uk www.inhouseestateagents.co.uk