

WE VALUE



YOUR HOME



Blewbury Court, Cholsey  
Offers Over £300,000





Positioned in the green surroundings of Cholsey Meadows, this well-presented ground-floor apartment offers a versatile layout, ideal for modern living. It features two double bedrooms, a study, and a utility room, along with a stylish bathroom. The open-plan kitchen, living, and dining area is equipped with integrated appliances and opens through double doors to a south-east-facing garden/courtyard, which enjoys views over the communal grounds. Additional benefits include allocated parking for one vehicle and visitor spaces for convenience.

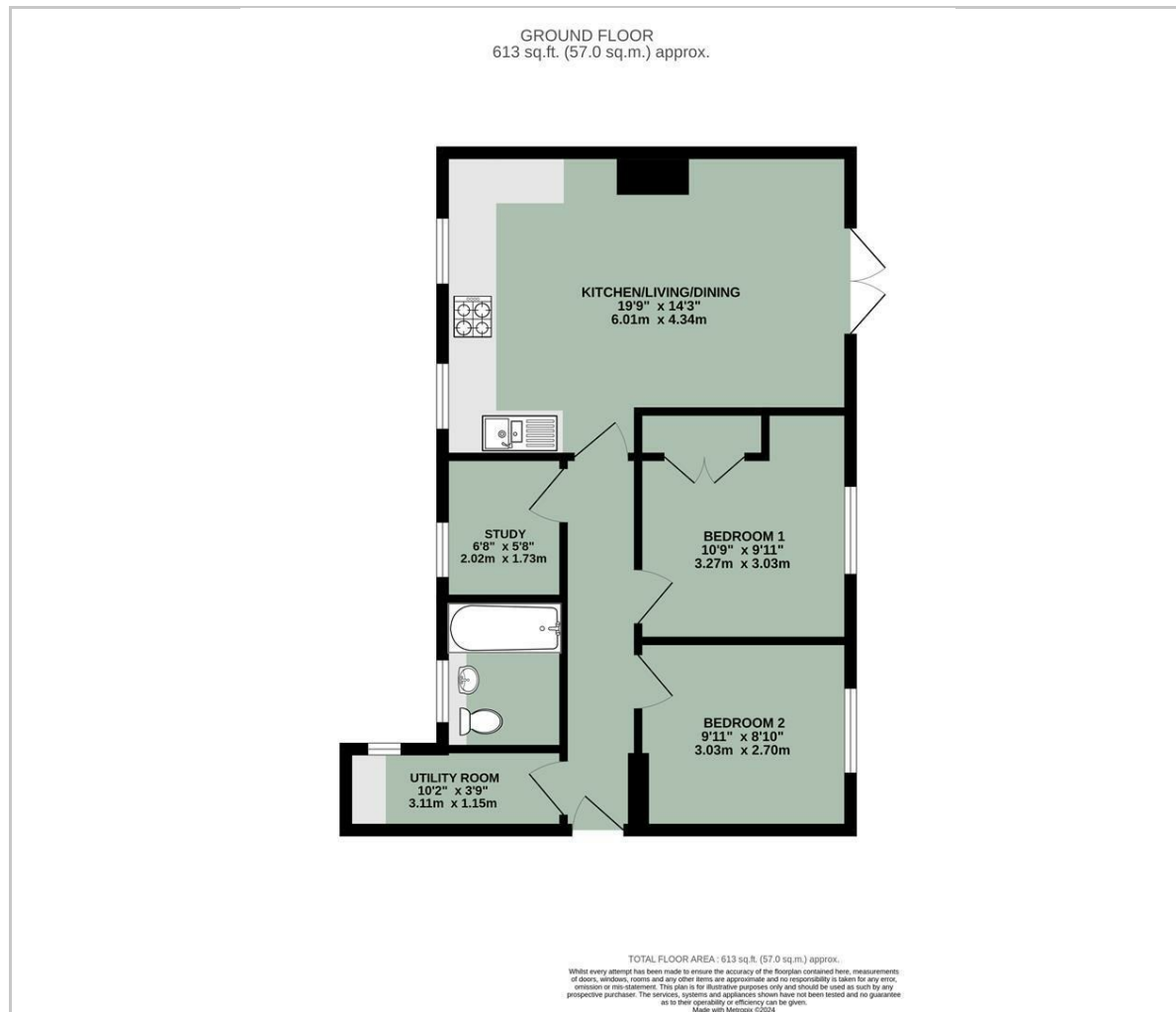








## Floor Plan



## Area Map



## Viewing

Please contact our In House Sales & Lettings Office on 01491 839999 opt.1  
if you wish to arrange a viewing appointment for this property or require further information.

These particulars, whilst believed to be accurate are set out as a general outline only for guidance and do not constitute any part of an offer or contract. Intending purchasers should not rely on them as statements of representation of fact, but must satisfy themselves by inspection or otherwise as to their accuracy. No person in this firm's employment has the authority to make or give any representation or warranty in respect of the property.

28 St Martins Street, Wallingford, Oxfordshire, OX10 0AL  
Tel: 01491 839999 opt.1 Email: [sales@inhouseestateagents.co.uk](mailto:sales@inhouseestateagents.co.uk) [www.inhouseestateagents.co.uk](http://www.inhouseestateagents.co.uk)