

WE VALUE



YOUR HOME



King Henry Avenue, Wallingford
£635,000

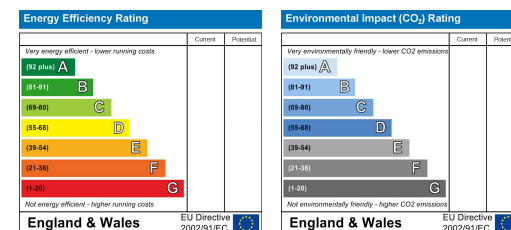


This exceptional show home is now available for purchase, complete with all fixtures, fittings, and furniture. This executive, semi-detached three-bedroom property exudes style and premium quality throughout. Chosen as the show home for its enviable positioning, it is located just a short walk from Wallingford town. The property features an inviting open-plan lounge/diner, a well-appointed kitchen/breakfast room with integrated appliances, and three thoughtfully designed bedrooms, including a main bedroom with en-suite and a family bathroom. Outside, a south-facing rear garden offers a peaceful retreat, while off-street parking adds to the convenience of this remarkable home.



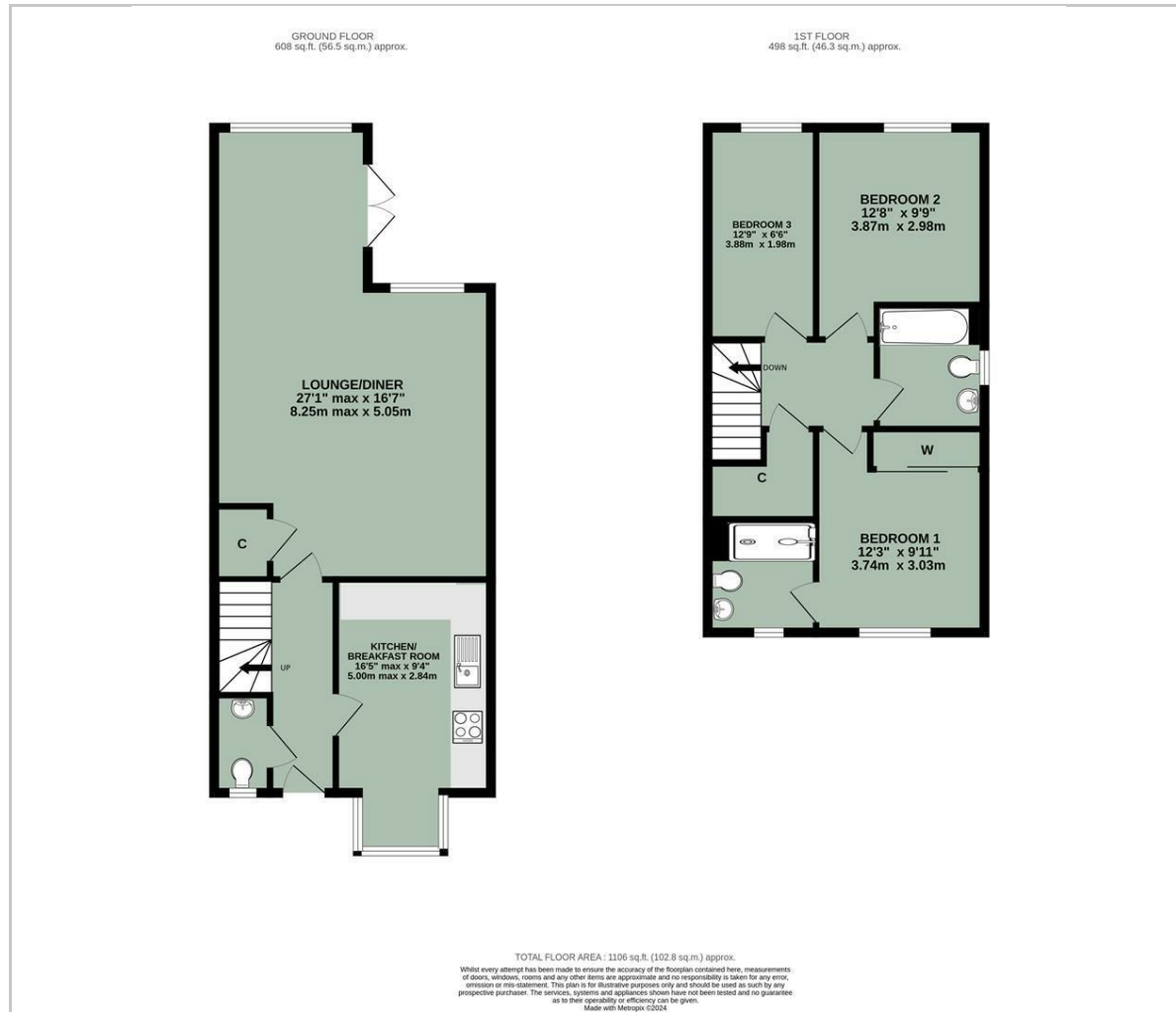


- EXECUTIVE NEW BUILD FAMILY HOME
- FITTINGS & FURNITURE INCLUDED IN PROPERTY SALE
- SOUTH FACING REAR GARDEN
- SPACIOUS LOUNGE / DINER
- EN-SUITE TO MAIN BEDROOM
- OFF-STREET PARKING
- HIGH END FIXTURES & FITTINGS
- NO ONWARD CHAIN
- DOWNSTAIRS CLOAKROOM
- KITCHEN / BREAKFAST ROOM WITH INTEGRATED APPLIANCES

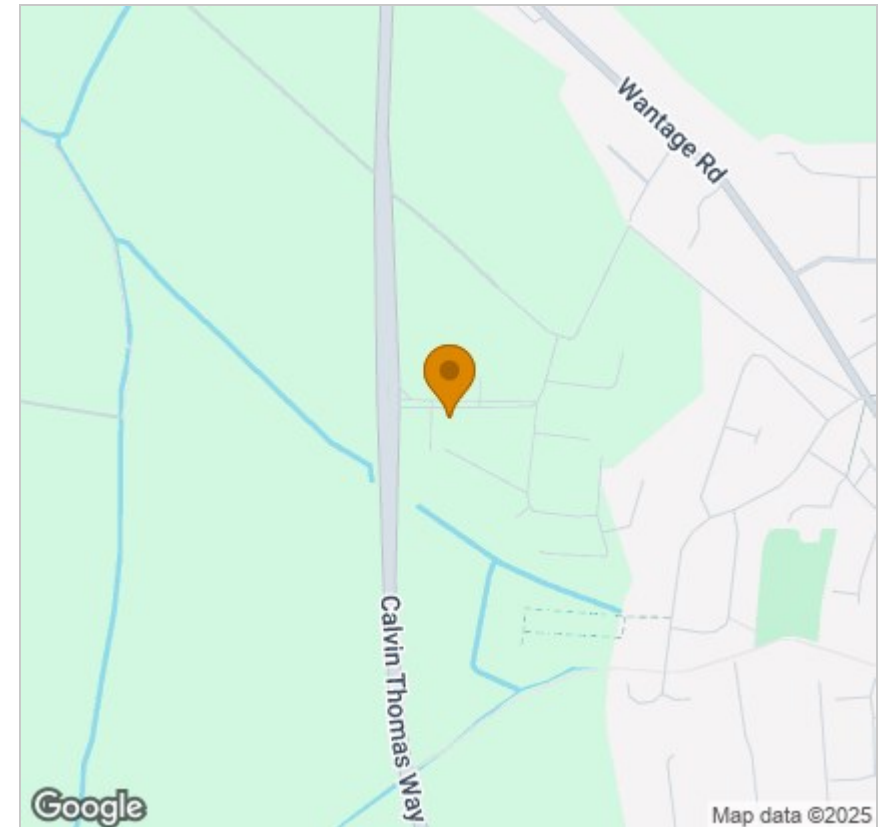


Energy Efficiency Graph

Floor Plan



Area Map



Viewing

Please contact our In House Sales & Lettings Office on 01491 839999 opt.1 if you wish to arrange a viewing appointment for this property or require further information.

These particulars, whilst believed to be accurate are set out as a general outline only for guidance and do not constitute any part of an offer or contract. Intending purchasers should not rely on them as statements of representation of fact, but must satisfy themselves by inspection or otherwise as to their accuracy. No person in this firm's employment has the authority to make or give any representation or warranty in respect of the property.

28 St Martins Street, Wallingford, Oxfordshire, OX10 0AL
Tel: 01491 839999 opt.1 Email: sales@inhouseestateagents.co.uk www.inhouseestateagents.co.uk