

WE VALUE



YOUR HOME



Main Road, East Hagbourne  
£1,100 PCM

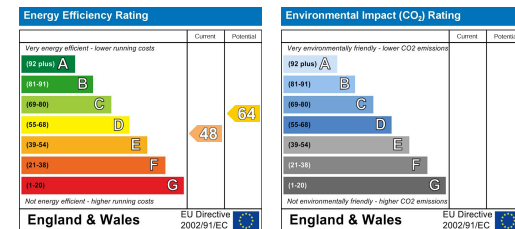


\*Available from November, un-furnished for long term let\* Well-presented and neutrally decorated, this first-floor apartment features a stylish open plan kitchen/living area, a double bedroom, a modern fitted bathroom, generous box bay windows and feature fireplaces. Located in the village of East Hagbourne, just a short distance from Didcot's excellent amenities and transport links.



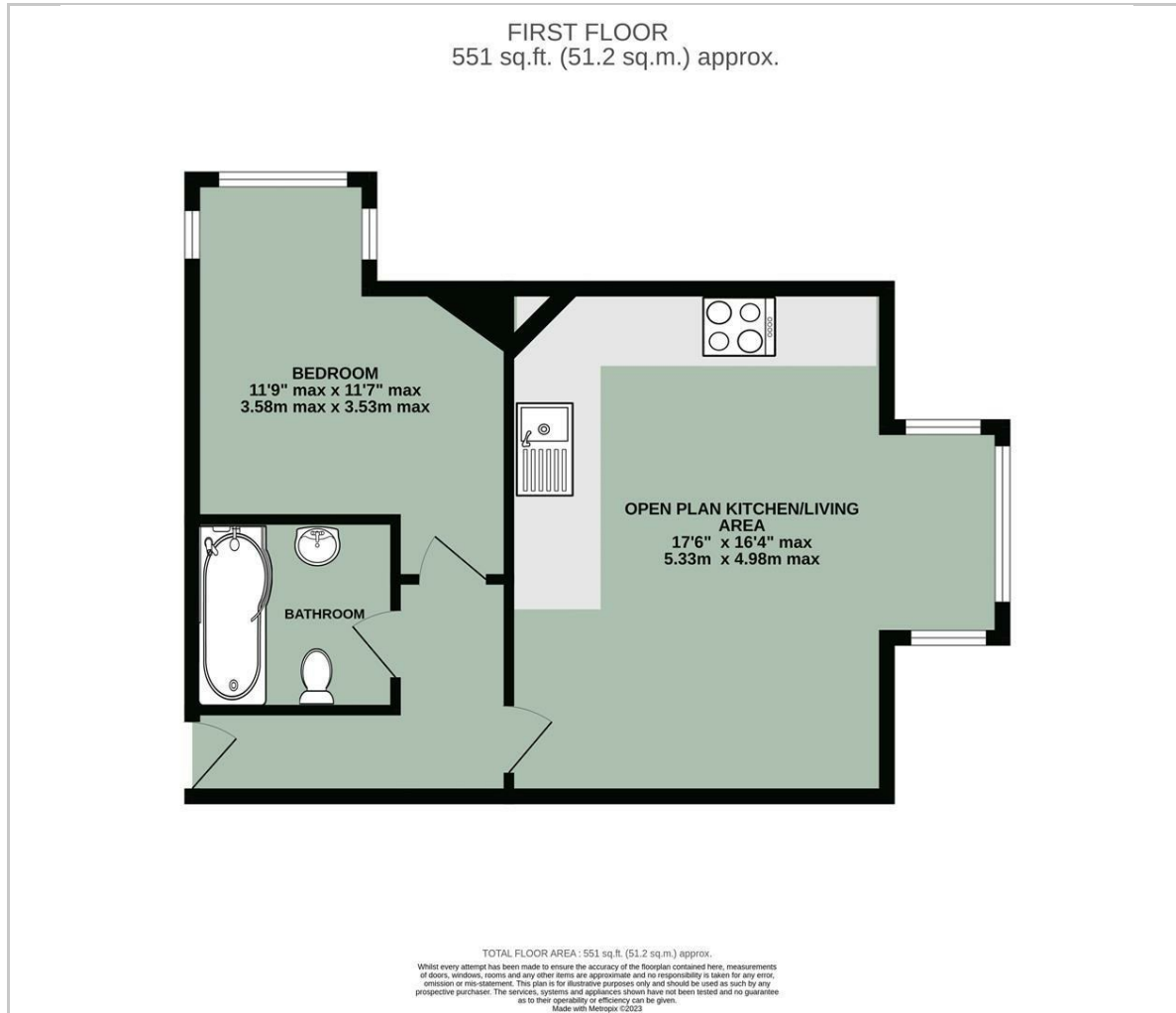


- WELL-PRESENTED & NEUTRALLY DECORATED
- SPACIOUS OPEN PLAN KITCHEN/LIVING AREA
- DOUBLE BEDROOM
- SEMI-RURAL LOCATION
- FEATURE FIREPLACES & BOX BAY WINDOWS
- AVAILABLE FROM NOVEMBER 2024
- LONG TERM LET, UN-FURNISHED

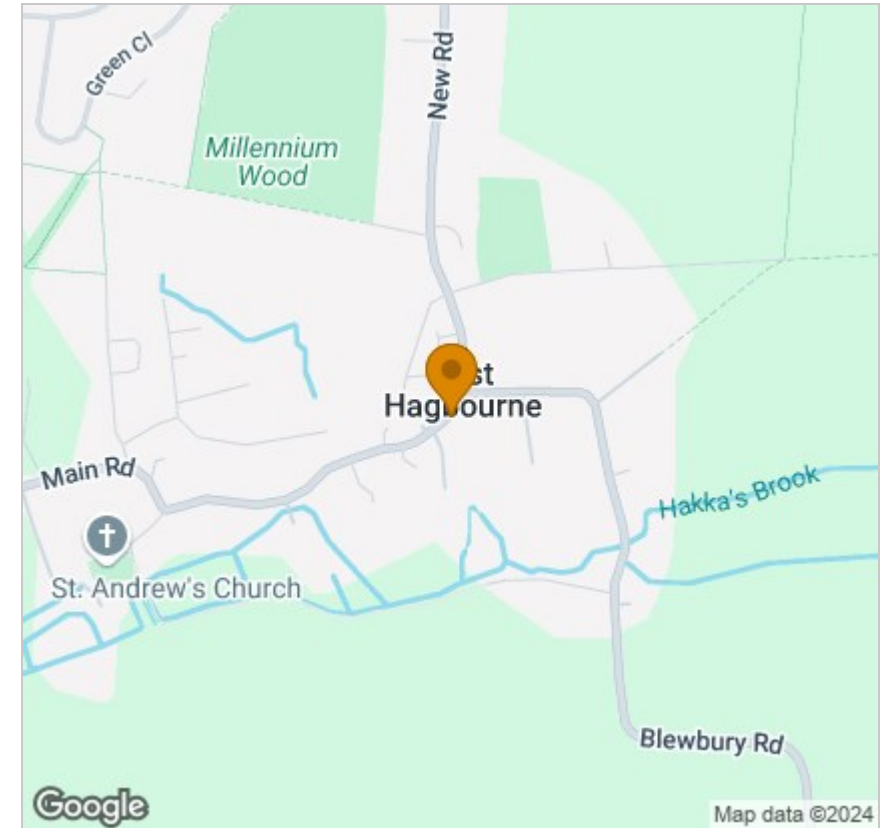


Energy Efficiency Graph

## Floor Plan



## Area Map



## Viewing

Please contact our In House Sales & Lettings Office on 01491 839999 opt.1 if you wish to arrange a viewing appointment for this property or require further information.

These particulars, whilst believed to be accurate are set out as a general outline only for guidance and do not constitute any part of an offer or contract. Intending purchasers should not rely on them as statements of representation of fact, but must satisfy themselves by inspection or otherwise as to their accuracy. No person in this firm's employment has the authority to make or give any representation or warranty in respect of the property.

28 St Martins Street, Wallingford, Oxfordshire, OX10 0AL  
Tel: 01491 839999 opt.1 Email: [sales@inhouseestateagents.co.uk](mailto:sales@inhouseestateagents.co.uk) [www.inhouseestateagents.co.uk](http://www.inhouseestateagents.co.uk)