

WE VALUE



YOUR HOME



Wolage Drive, Grove  
£225,000

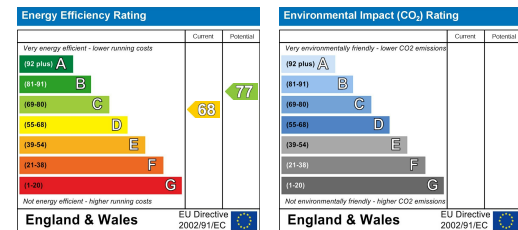


Offered with no onward chain, this spacious ground-floor apartment is a rare find, boasting windows on three sides that allow for ample natural light throughout. The property features two double bedrooms, including a master with en-suite, an additional bathroom, a generous lounge/diner, and a well-appointed kitchen. Ideally located next to a bus stop for convenient transport links, the apartment also benefits from allocated parking for one vehicle.



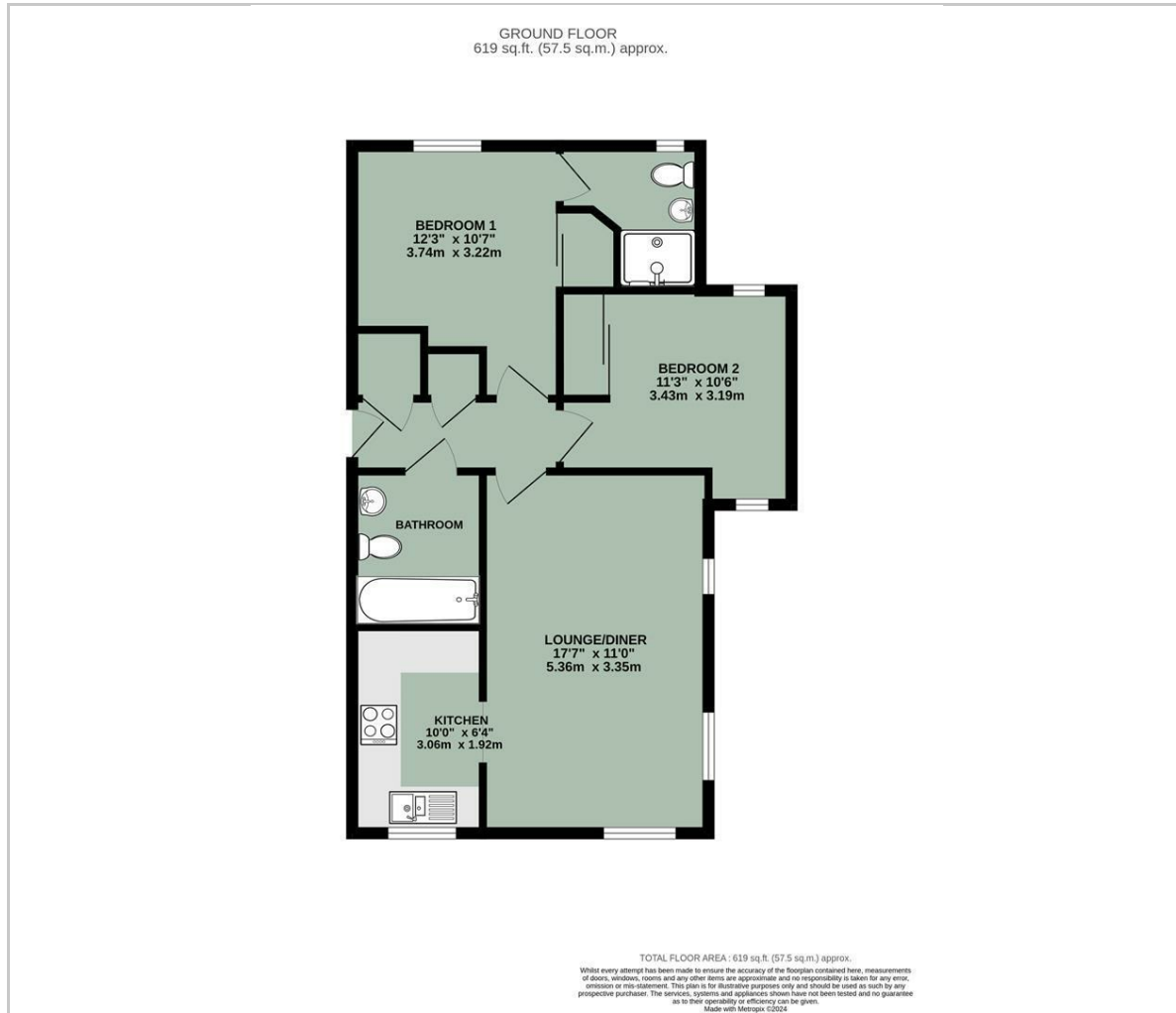


- NO ONWARD CHAIN
- GROUND FLOOR APARTMENT
- TWO DOUBLE BEDROOMS
- EN-SUITE TO MASTER
- CLOSE TO TRANSPORT LINKS/BUS STOP
- ALLOCATED PARKING SPACE

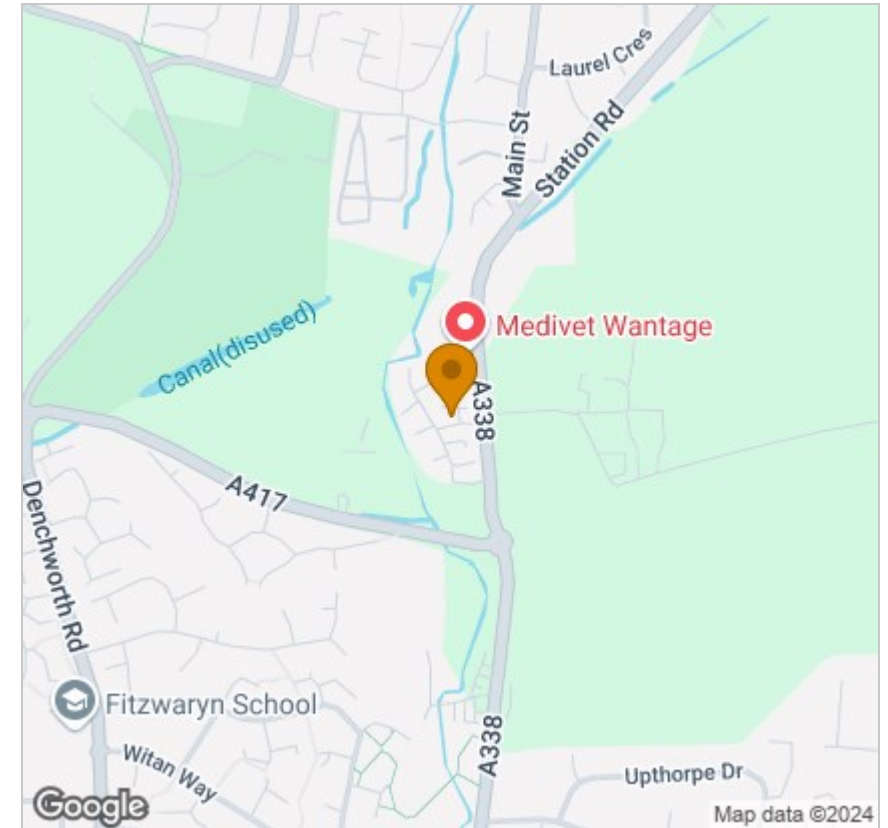


Energy Efficiency Graph

## Floor Plan



## Area Map



## Viewing

Please contact our In House Sales & Lettings Office on 01491 839999 opt.1 if you wish to arrange a viewing appointment for this property or require further information.

These particulars, whilst believed to be accurate are set out as a general outline only for guidance and do not constitute any part of an offer or contract. Intending purchasers should not rely on them as statements of representation of fact, but must satisfy themselves by inspection or otherwise as to their accuracy. No person in this firm's employment has the authority to make or give any representation or warranty in respect of the property.

28 St Martins Street, Wallingford, Oxfordshire, OX10 0AL  
Tel: 01491 839999 opt.1 Email: [sales@inhouseestateagents.co.uk](mailto:sales@inhouseestateagents.co.uk) [www.inhouseestateagents.co.uk](http://www.inhouseestateagents.co.uk)