

WE VALUE



YOUR HOME



Offas Close, Benson
Offers In Excess Of £400,000

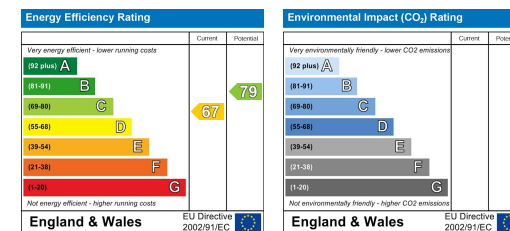


Beautifully presented throughout, this charming three-bedroom semi-detached home offers comfortable living in a convenient location close to shops and amenities. The generously sized lounge features a picture window to the front aspect, providing a bright and welcoming space. The kitchen offers ample room for a range cooker and other appliances, flowing into a dining room. Outside, the south-west facing rear garden includes a timber decking area, ideal for outdoor dining and relaxation. Additional features include an external storage cupboard attached to the side of the property and off-street parking for two vehicles.



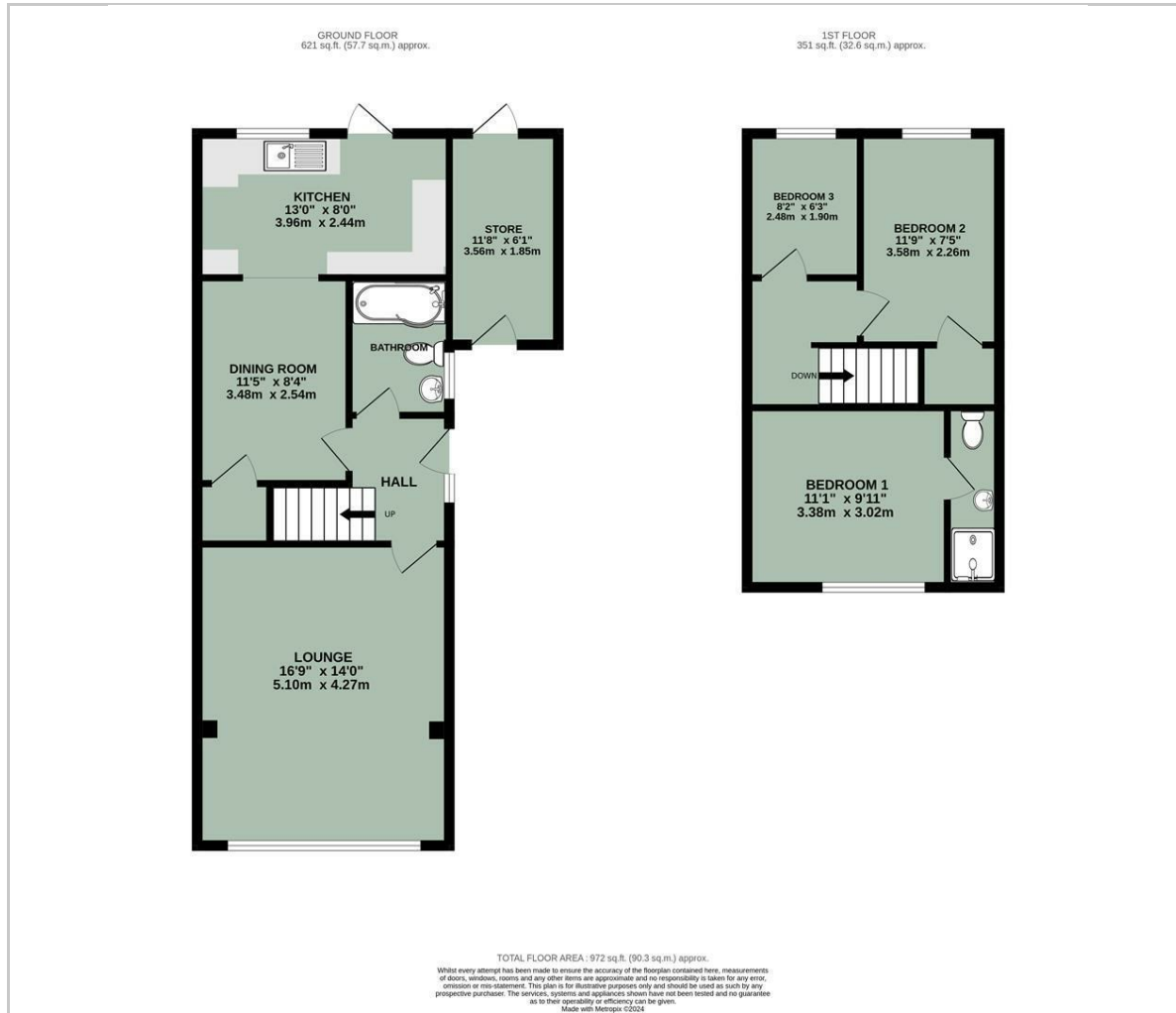


- THREE BEDROOM SEMI DETACHED PROPERTY
- SOUTH-WEST FACING REAR GARDEN
- CLOSE TO VILLAGE SHOPS & AMENITIES
- BEAUTIFULLY PRESENTED THROUGHOUT
- GENEROUS LOUNGE WITH PICTURE WINDOW
- OFF-STREET PARKING FOR TWO VEHICLES

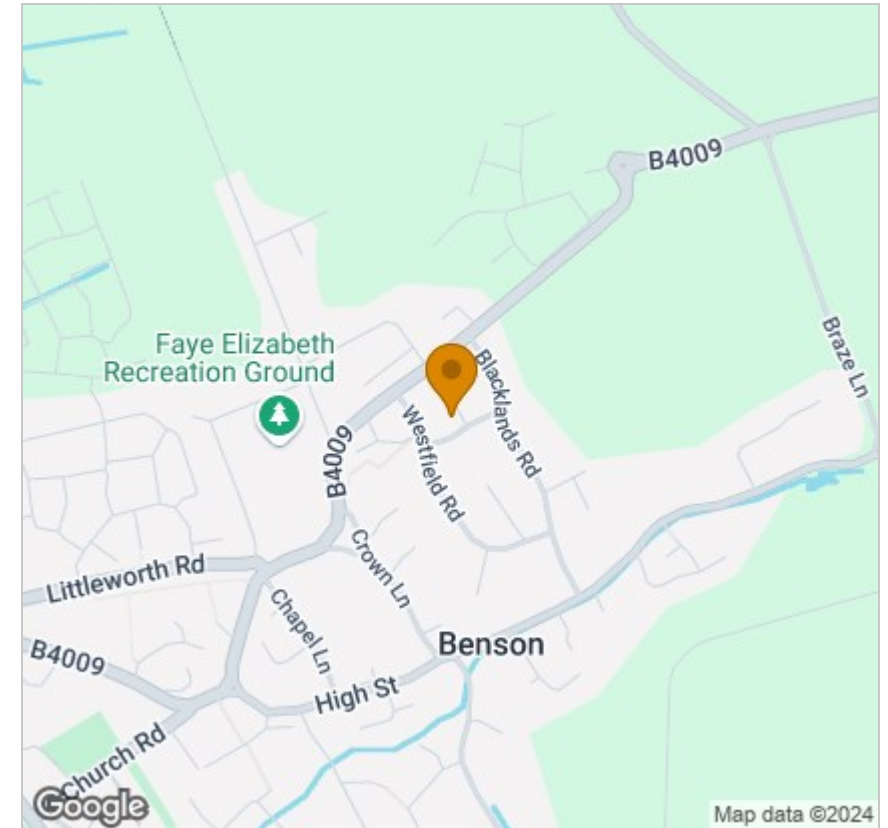


Energy Efficiency Graph

Floor Plan



Area Map



Viewing

Please contact our In House Sales & Lettings Office on 01491 839999 opt.1 if you wish to arrange a viewing appointment for this property or require further information.

These particulars, whilst believed to be accurate are set out as a general outline only for guidance and do not constitute any part of an offer or contract. Intending purchasers should not rely on them as statements of representation of fact, but must satisfy themselves by inspection or otherwise as to their accuracy. No person in this firm's employment has the authority to make or give any representation or warranty in respect of the property.

28 St Martins Street, Wallingford, Oxfordshire, OX10 0AL
Tel: 01491 839999 opt.1 Email: sales@inhouseestateagents.co.uk www.inhouseestateagents.co.uk