

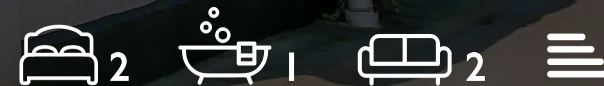
WE VALUE



YOUR HOME



Malthouse Lane, Dorchester-On-Thames
Offers Over £450,000



Nestled away in the ever popular village of Dorchester-on-Thames, this tastefully presented Grade II listed thatched cottage has everything you would expect from a character property and more. With traditional features throughout including exposed beams and an inglenook fireplace, this pretty home features separate reception rooms, a utility room, two double bedrooms, a relaxing cottage-style courtyard garden and a garage! Situated in the heart of the village, just a short stroll from the famous Dorchester Abbey and open countryside, this gem of a property is ideal for those who appreciate properties of the past and their period charm.



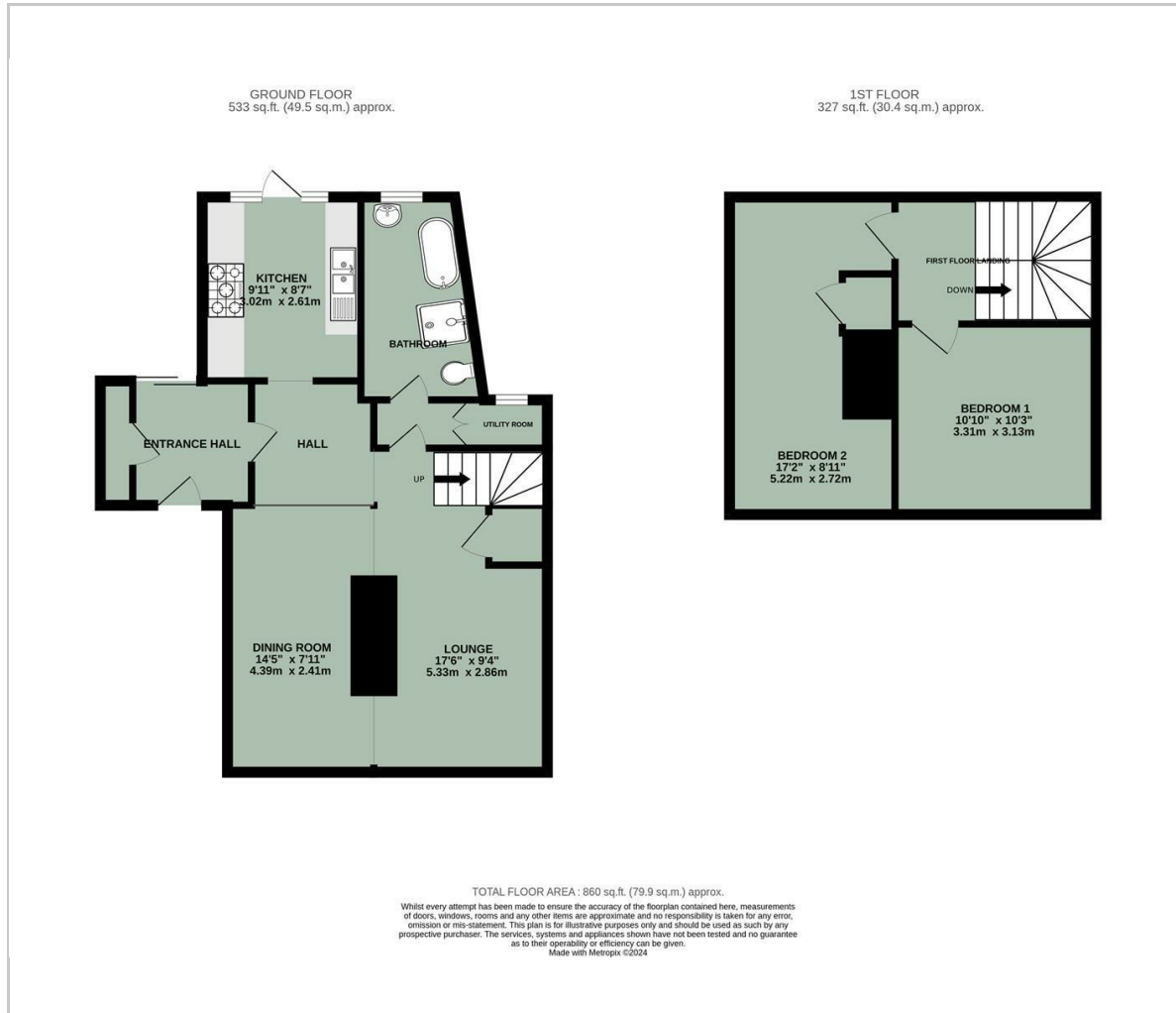


- GRADE II LISTED THATCHED COTTAGE
- INGLE NOOK FIREPLACE
- GARAGE
- REAR COURTYARD GARDEN
- UTILITY ROOM
- TWO DOUBLE BEDROOMS
- PERIOD FEATURES
- SHORT WALK TO SHOPS & AMENITIES



Energy Efficiency Graph

Floor Plan



Area Map



Viewing

Please contact our In House Sales & Lettings Office on 01491 839999 opt.1 if you wish to arrange a viewing appointment for this property or require further information.

These particulars, whilst believed to be accurate are set out as a general outline only for guidance and do not constitute any part of an offer or contract. Intending purchasers should not rely on them as statements of representation of fact, but must satisfy themselves by inspection or otherwise as to their accuracy. No person in this firm's employment has the authority to make or give any representation or warranty in respect of the property.

28 St Martins Street, Wallingford, Oxfordshire, OX10 0AL
Tel: 01491 839999 opt.1 Email: sales@inhouseestateagents.co.uk www.inhouseestateagents.co.uk