

WE VALUE



YOUR HOME



Thame Road, Warborough
£2,000 Per Month

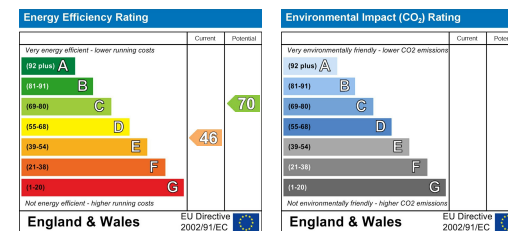


Available immediately for long term let, un-furnished
Located just a stones throw from the village green and primary school, this four-bedroom period property is arranged over three floors and features an open fireplace to the lounge, a generous kitchen/diner, an en-suite to the main bedroom and a south-west facing garden with a storage outbuilding. With off-street parking for two vehicles, this property is ideal for those who love a home with plenty of character!



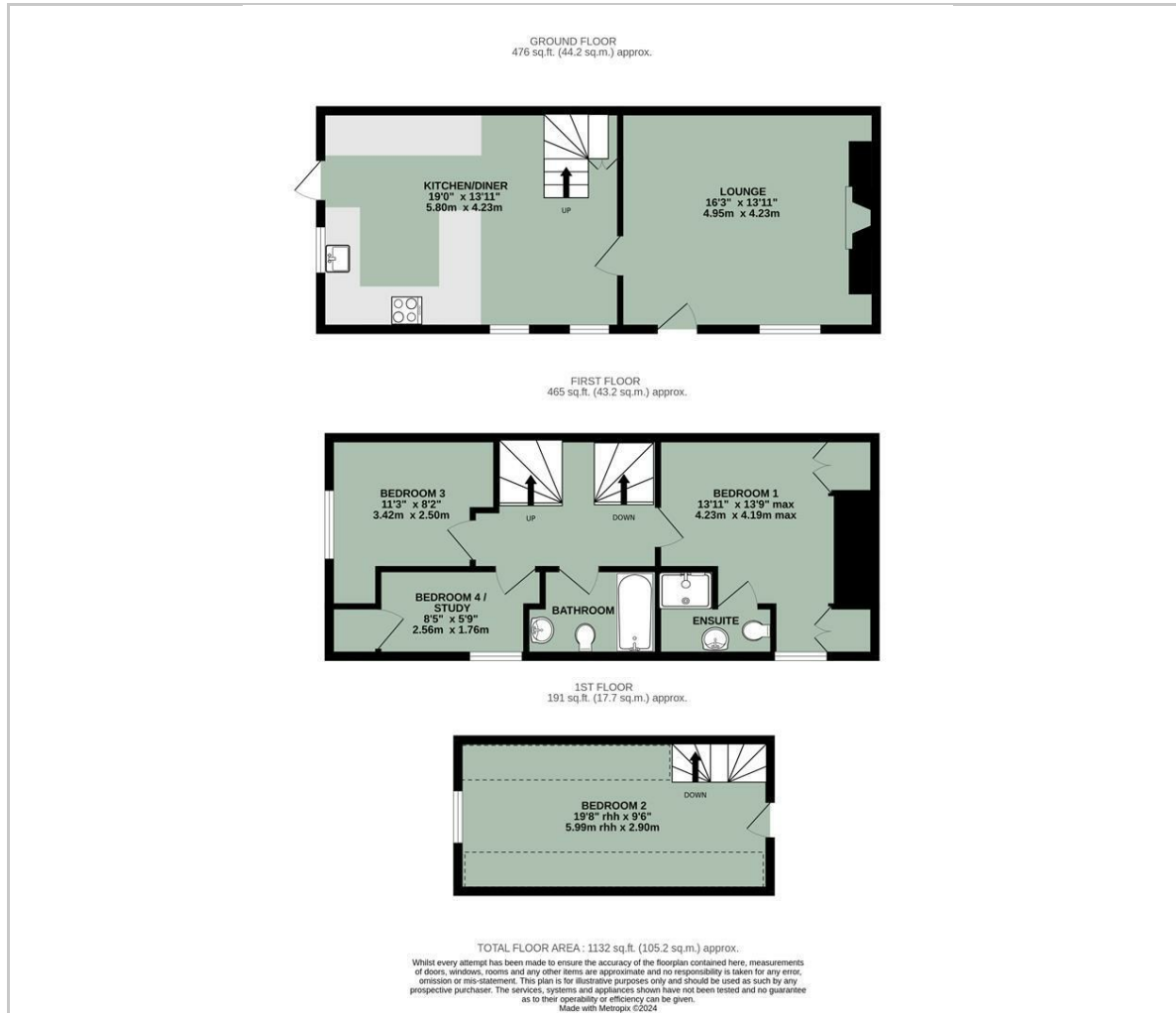


- AVAILABLE FROM AUG 24 FOR LONG-TERM LET
- FOUR BEDROOM PERIOD PROPERTY
- SOUTH-WEST FACING GARDEN
- OFF-STREET PARKING
- OPEN FIREPLACE
- EN-SUITE TO THE MAIN BEDROOM
- SPACIOUS KITCHEN/DINER
- CLOSE TO VILLAGE GREEN & PRIMARY SCHOOL

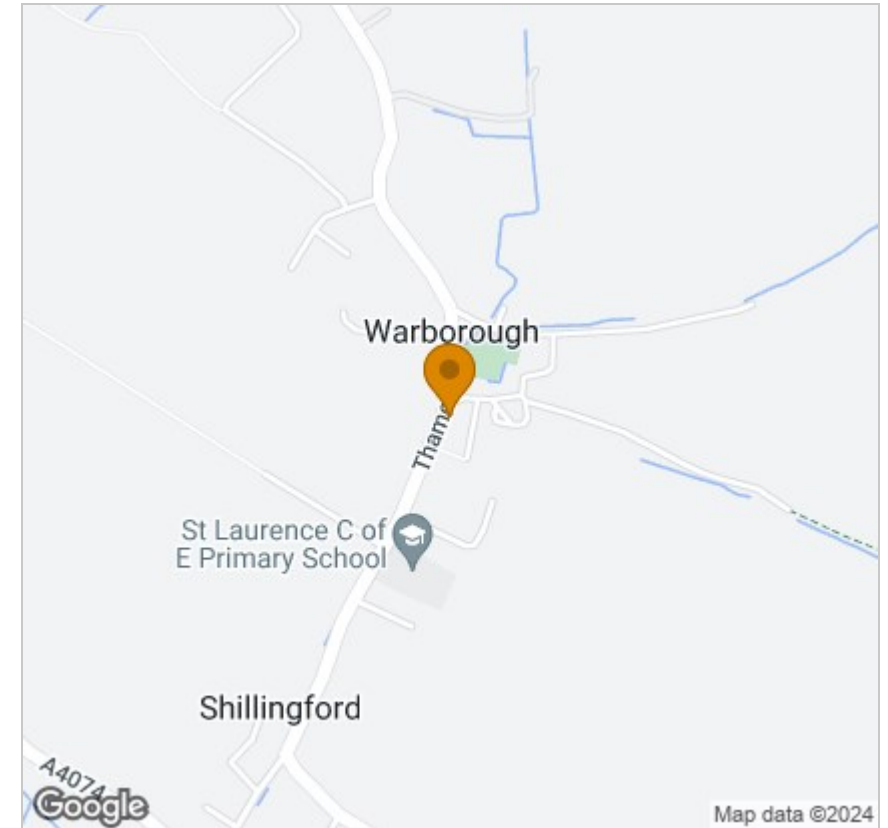


Energy Efficiency Graph

Floor Plan



Area Map



Viewing

Please contact our In House Sales & Lettings Office on 01491 839999 opt.1 if you wish to arrange a viewing appointment for this property or require further information.

These particulars, whilst believed to be accurate are set out as a general outline only for guidance and do not constitute any part of an offer or contract. Intending purchasers should not rely on them as statements of representation of fact, but must satisfy themselves by inspection or otherwise as to their accuracy. No person in this firm's employment has the authority to make or give any representation or warranty in respect of the property.

28 St Martins Street, Wallingford, Oxfordshire, OX10 0AL
Tel: 01491 839999 opt.1 Email: sales@inhouseestateagents.co.uk www.inhouseestateagents.co.uk