

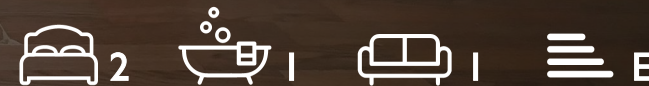
WE VALUE



YOUR HOME



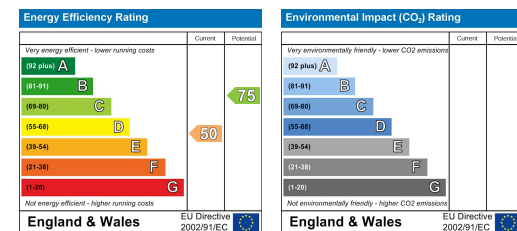
Fleet Way, Didcot  
£159,000



Ideally located just a short stroll to the town centre and with great transport links nearby, this first floor maisonette comes with a good sized lounge/diner with a Juliet balcony overlooking the communal green space, two double bedrooms and two allocated parking spaces. Coming to the market with no onward chain and with a short lease length, this property is ideal for investors or cash buyers.

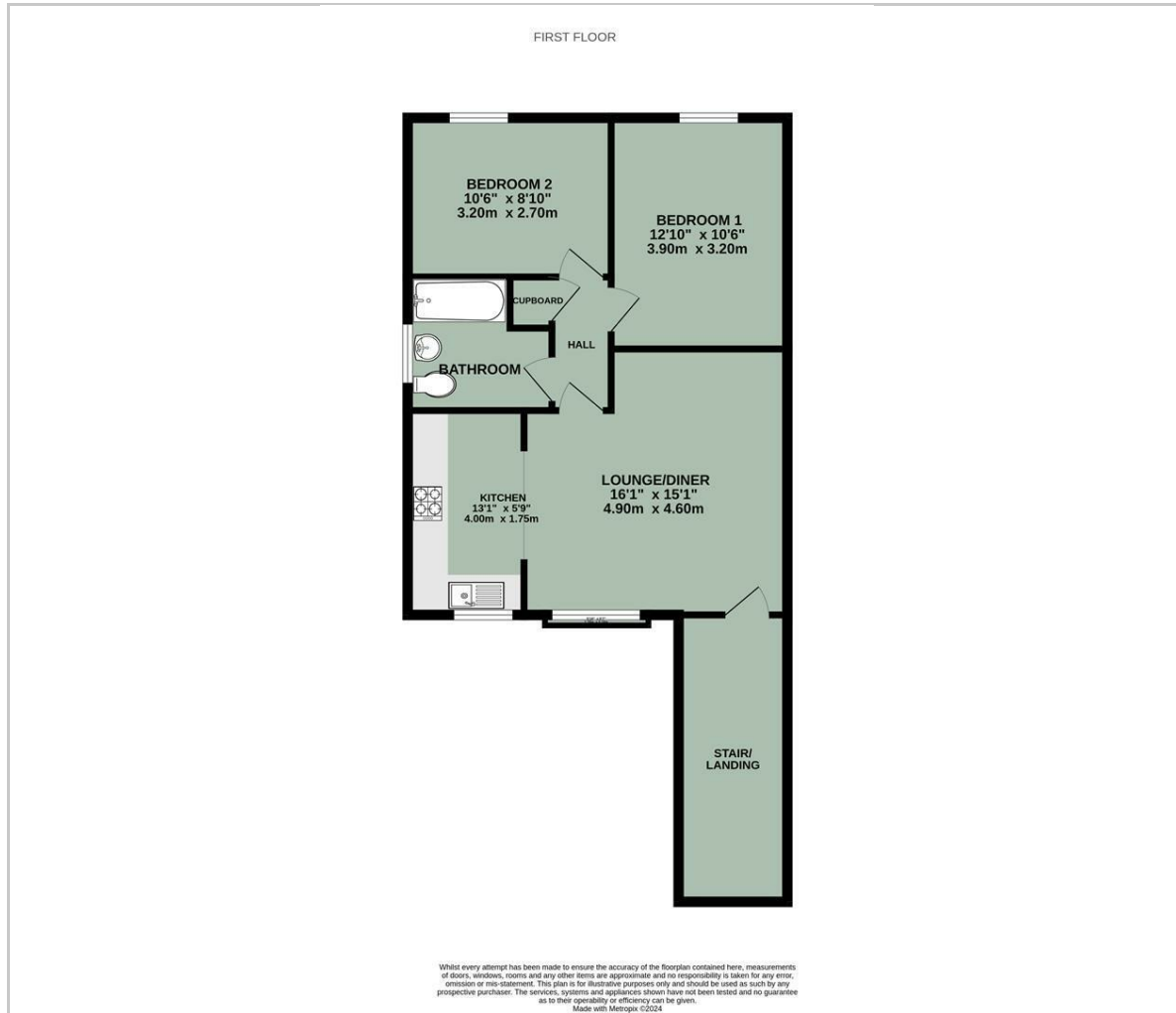


- NO ONWARD CHAIN
- SPACIOUS LOUNGE/DINER
- JULIET BALCONY
- TWO DOUBLE BEDROOMS
- OFF-STREET PARKING FOR TWO VEHICLES
- IDEAL INVESTMENT PROPERTY
- 51 YEARS REMAINING ON LEASE

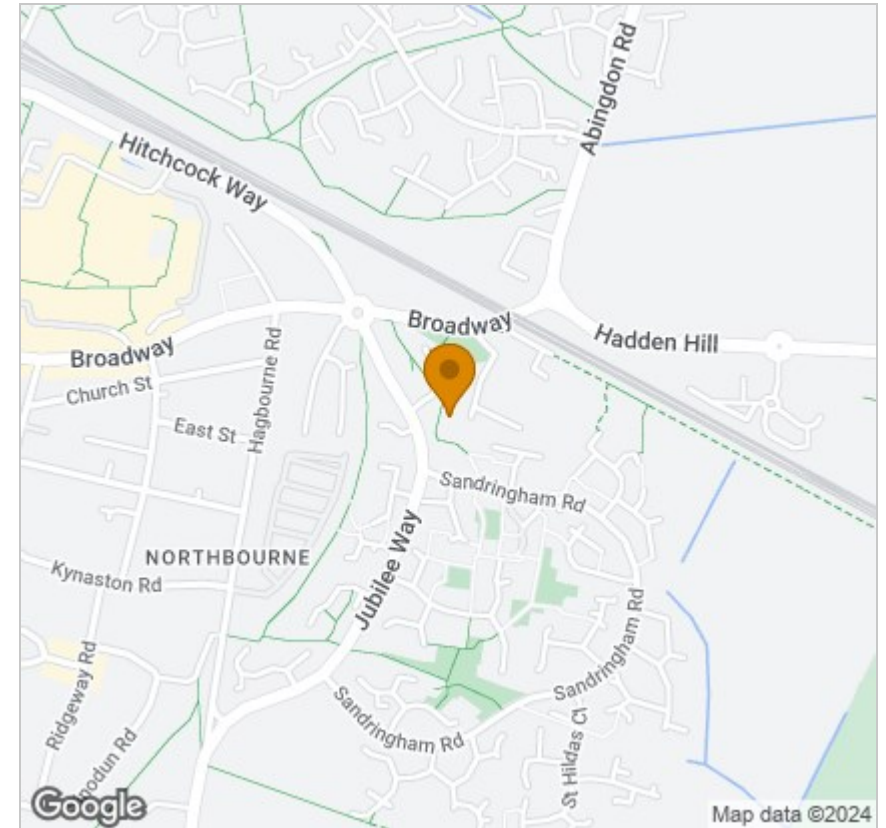


Energy Efficiency Graph

## Floor Plan



## Area Map



## Viewing

Please contact our In House Sales & Lettings Office on 01491 839999 opt.1 if you wish to arrange a viewing appointment for this property or require further information.

These particulars, whilst believed to be accurate are set out as a general outline only for guidance and do not constitute any part of an offer or contract. Intending purchasers should not rely on them as statements of representation of fact, but must satisfy themselves by inspection or otherwise as to their accuracy. No person in this firm's employment has the authority to make or give any representation or warranty in respect of the property.

28 St Martins Street, Wallingford, Oxfordshire, OX10 0AL  
Tel: 01491 839999 opt.1 Email: [sales@inhouseestateagents.co.uk](mailto:sales@inhouseestateagents.co.uk) [www.inhouseestateagents.co.uk](http://www.inhouseestateagents.co.uk)