

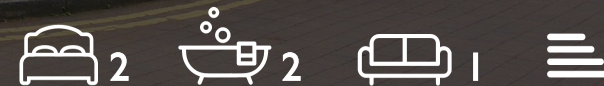
WE VALUE



YOUR HOME



SMITHS WHARF, WANTAGE  
£1,200 PCM

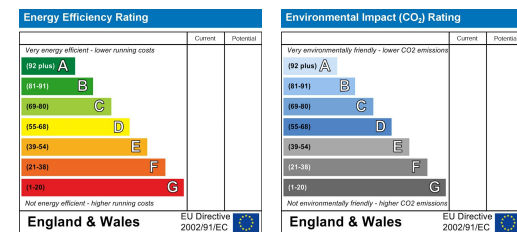




\*Available from Mid September 2024, unfurnished for long term let\* If you want the convenience of a town centre lifestyle, yet also crave a little peace and quiet, this light and airy apartment could be just what you need! Situated just moments from the thriving market town and all of its amenities, this well-presented property comes with allocated parking, good size rooms and an en-suite to master bedroom.

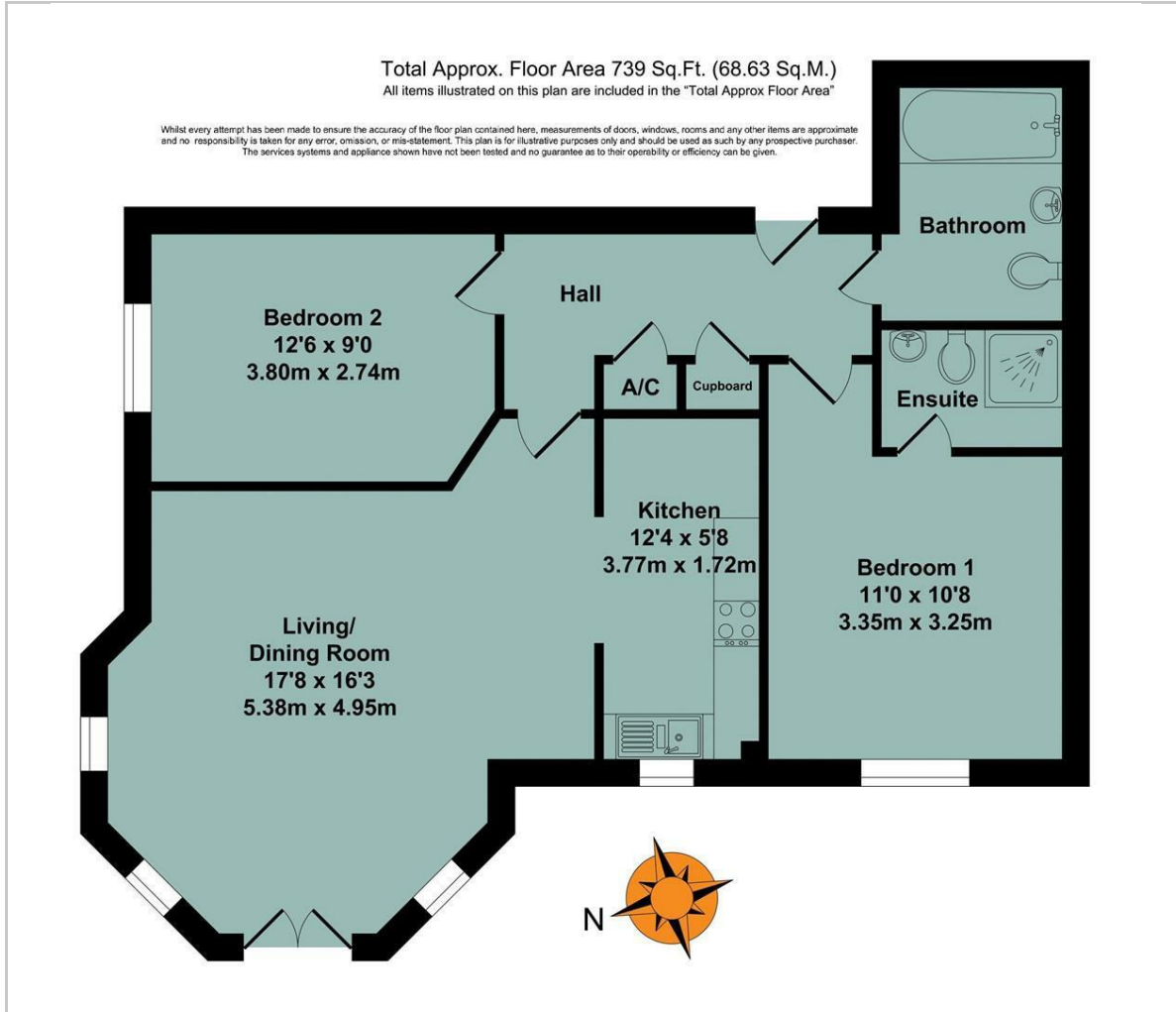


- LONG TERM LET
- OFF-STREET PARKING
- EN-SUITE TO MASTER
- WELL-PRESENTED THROUGHOUT
- DOUBLE BEDROOMS
- CLOSE TO TOWN CENTRE
- UNFURNISHED
- AVAILABLE FROM MID SEPTEMBER 2024



Energy Efficiency Graph

## Floor Plan



## Area Map



## Viewing

Please contact our In House Sales & Lettings Office on 01491 839999 opt.1 if you wish to arrange a viewing appointment for this property or require further information.

These particulars, whilst believed to be accurate are set out as a general outline only for guidance and do not constitute any part of an offer or contract. Intending purchasers should not rely on them as statements of representation of fact, but must satisfy themselves by inspection or otherwise as to their accuracy. No person in this firm's employment has the authority to make or give any representation or warranty in respect of the property.

28 St Martins Street, Wallingford, Oxfordshire, OX10 0AL  
Tel: 01491 839999 opt.1 Email: [sales@inhouseestateagents.co.uk](mailto:sales@inhouseestateagents.co.uk) [www.inhouseestateagents.co.uk](http://www.inhouseestateagents.co.uk)