

WE VALUE



YOUR HOME



High Street, Drayton St Leonard
£395,000

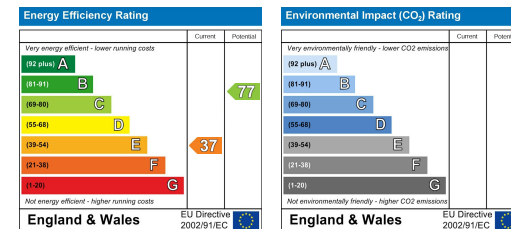


Welcome to 'New Cottage'... This picturesque period property is located in the heart of Drayton St. Leonard and comes with a wealth of character features including an open working fireplace and exposed beams. Benefitting from three good sized bedrooms, separate reception rooms, an enclosed rear garden and off-street parking. If you are looking for a home with plenty of character to put your own stamp on, this quaint cottage could be the perfect find!



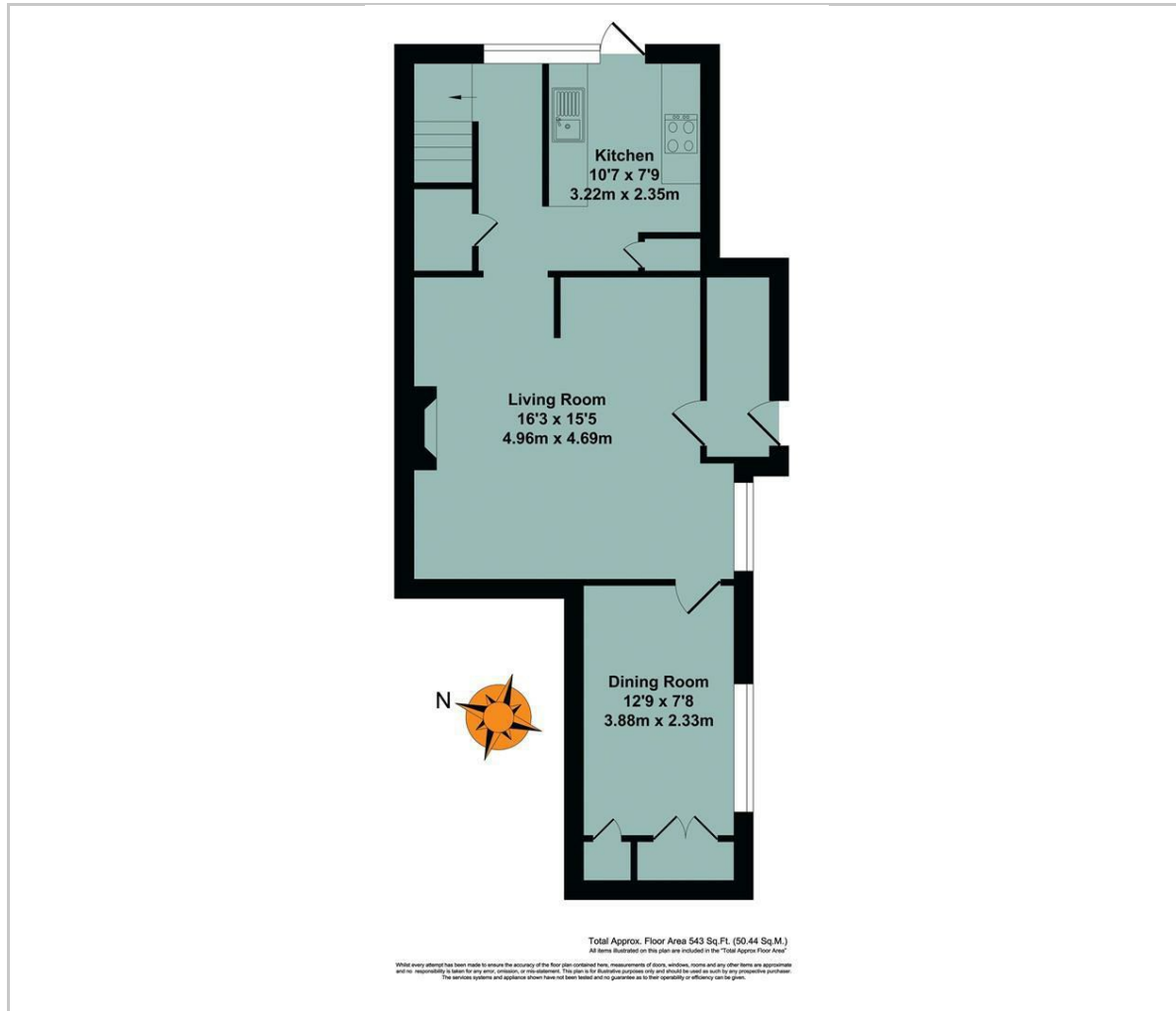


- CHARACTER COTTAGE
- OPEN FIREPLACE
- THREE BEDROOMS
- OFF-STREET PARKING
- ENCLOSED REAR GARDEN
- SEPARATE RECEPTION ROOMS
- PERIOD FEATURES
- VILLAGE LOCATION
- SCOPE FOR INTERIOR IMPROVEMENTS



Energy Efficiency Graph

Floor Plan



Area Map



Viewing

Please contact our In House Sales & Lettings Office on 01491 839999 opt.1 if you wish to arrange a viewing appointment for this property or require further information.

These particulars, whilst believed to be accurate are set out as a general outline only for guidance and do not constitute any part of an offer or contract. Intending purchasers should not rely on them as statements of representation of fact, but must satisfy themselves by inspection or otherwise as to their accuracy. No person in this firm's employment has the authority to make or give any representation or warranty in respect of the property.

28 St Martins Street, Wallingford, Oxfordshire, OX10 0AL
Tel: 01491 839999 opt.1 Email: sales@inhouseestateagents.co.uk www.inhouseestateagents.co.uk