

WE VALUE



YOUR HOME



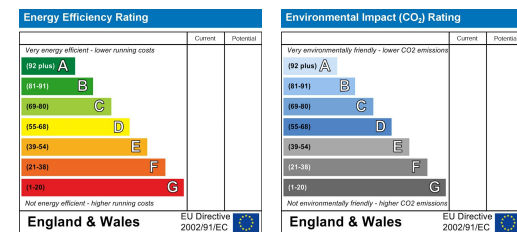
Walter Bigg Way, Wallingford
£249,000



Located within a stone's throw of Wallingford's many amenities and parks, this well-presented first floor apartment comes with a spacious layout and features two good sized double bedrooms with an en-suite to the main, a lounge, fitted kitchen/diner and a bathroom. With allocated parking and well-kept communal gardens to enjoy, this apartment, which is coming to the market with no onward chain is ideal for those looking for a practical property within walking distance of shops, picturesque riverside walks and good transport links.

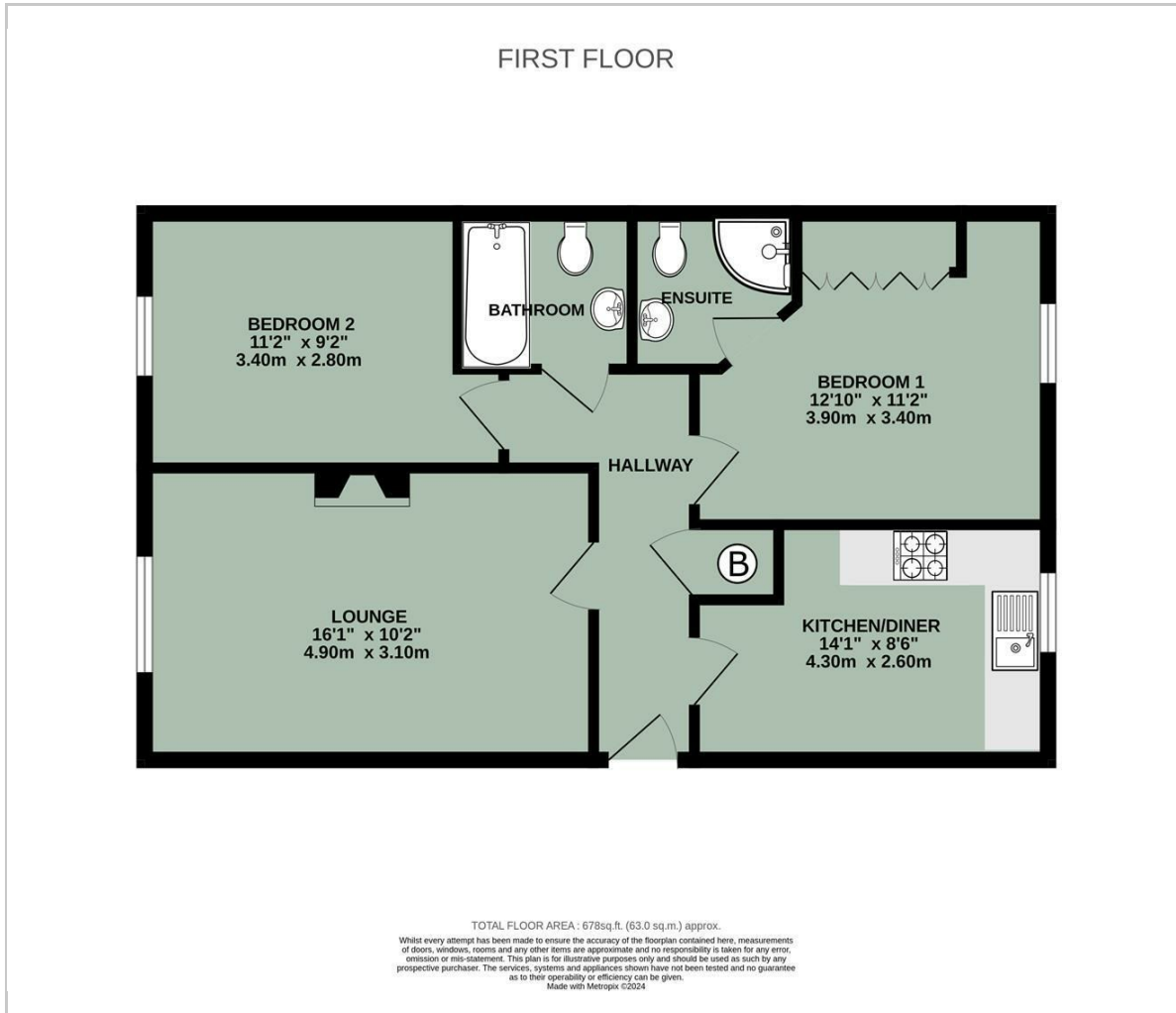


- NO ONWARD CHAIN
- SPACIOUS FIRST FLOOR APARTMENT
- BATHROOM & EN-SUITE
- TWO DOUBLE BEDROOMS
- ALLOCATED PARKING & VISITOR SPACES
- CLOSE TO TOWN CENTRE & GREEN SPACE
- COMMUNAL GARDEN
- WELL-PRESENTED THROUGHOUT



Energy Efficiency Graph

Floor Plan



Viewing

Please contact our In House Sales & Lettings Office on 01491 839999 opt.1 if you wish to arrange a viewing appointment for this property or require further information.

These particulars, whilst believed to be accurate are set out as a general outline only for guidance and do not constitute any part of an offer or contract. Intending purchasers should not rely on them as statements of representation of fact, but must satisfy themselves by inspection or otherwise as to their accuracy. No person in this firm's employment has the authority to make or give any representation or warranty in respect of the property.

28 St Martins Street, Wallingford, Oxfordshire, OX10 0AL
Tel: 01491 839999 opt.1 Email: sales@inhouseestateagents.co.uk www.inhouseestateagents.co.uk

Area Map

