

WE VALUE



YOUR HOME



Tenpenny, Dorchester-On-Thames
Offers Over £600,000

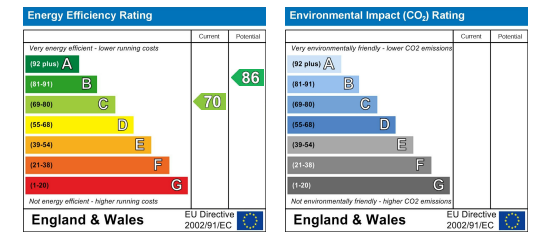


If space and style are high on your wish list, this extended family home could offer the perfect solution. With plenty of room both inside and out, the interior features a practical and versatile layout with a striking open plan style kitchen/diner, four bedrooms arranged over the two floors, a family bathroom and en-suite and plenty of reception space thanks to the homely lounge with its wood burner and an 18ft dual aspect family room. With gardens to the front, side and rear, there's plenty of outdoor space for the family to enjoy and with both off-street parking and a garage, parking won't be an issue! Located within a cul-de-sac in the highly desirable village of Dorchester-on-Thames, just a short stroll from beautiful open countryside, the village amenities and famous Abbey, this stylish property is perfect for those looking for a practical home within a picturesque village.



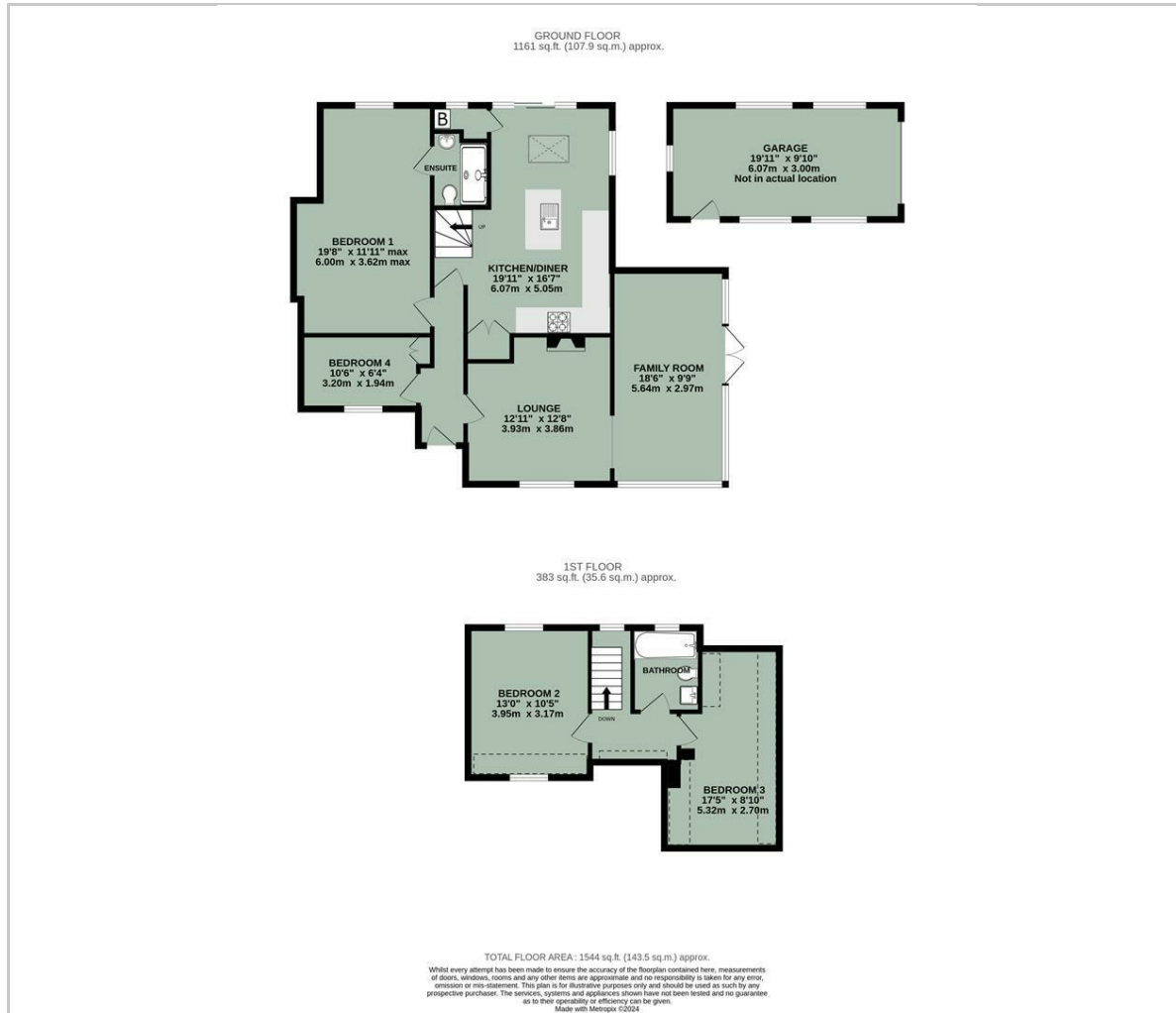


- EXTENDED SPACIOUS FAMILY HOME
- FOUR BEDROOMS ARRANGED OVER TWO FLOORS
- OPEN PLAN KITCHEN/DINER & UTILITY
- LOUNGE WITH WOOD BURNER
- 18FT DUAL ASPECT FAMILY ROOM
- BATHROOM & EN-SUITE
- GENEROUS GARDENS TO THREE ASPECTS
- GARAGE & OFF-STREET PARKING
- CUL-DE-SAC LOCATION

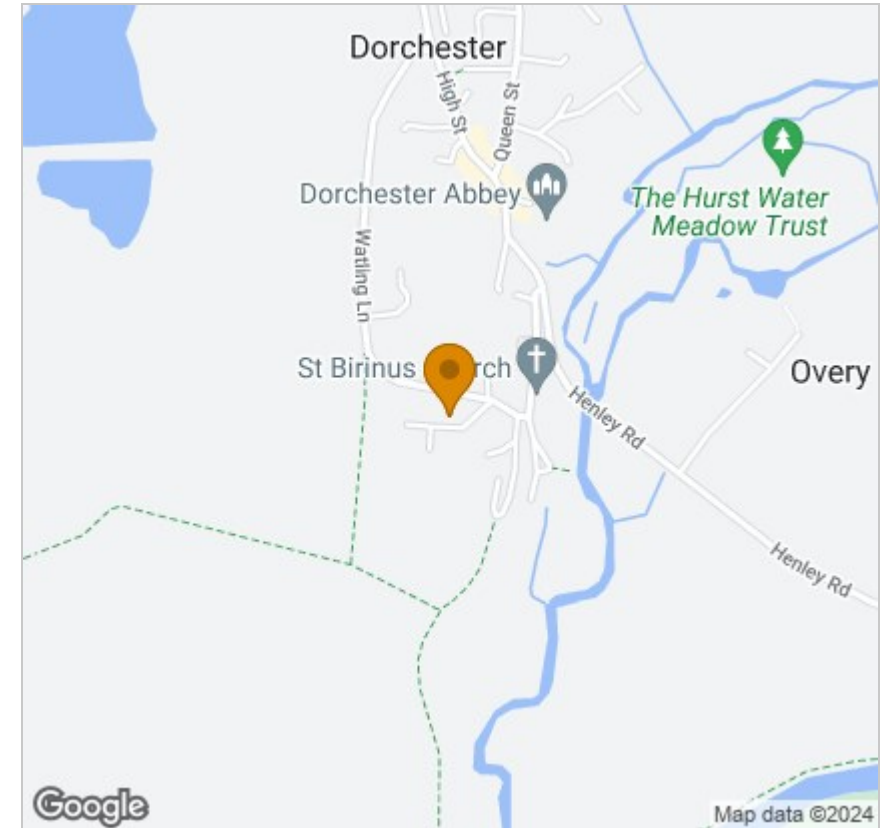


Energy Efficiency Graph

Floor Plan



Area Map



Viewing

Please contact our In House Sales & Lettings Office on 01491 839999 opt.1
if you wish to arrange a viewing appointment for this property or require further information.

These particulars, whilst believed to be accurate are set out as a general outline only for guidance and do not constitute any part of an offer or contract. Intending purchasers should not rely on them as statements of representation of fact, but must satisfy themselves by inspection or otherwise as to their accuracy. No person in this firm's employment has the authority to make or give any representation or warranty in respect of the property.

28 St Martins Street, Wallingford, Oxfordshire, OX10 0AL
Tel: 01491 839999 opt.1 Email: sales@inhouseestateagents.co.uk www.inhouseestateagents.co.uk