

WE VALUE



YOUR HOME



Burcot Park, Burcot  
Offers Over £675,000

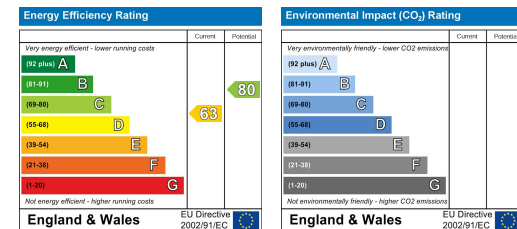


Located in the private surroundings of Burcot Park, this striking modernist property was designed by Steane Shipman & Cantacuzino, sitting centrally on its generous plot of 0.28 acres and offering a peaceful retreat away from the hustle and bustle of city life. Detached and with many dual aspect rooms, this light and spacious home features an open-plan living area and four bedrooms with ample built-in storage. The once triple garage has been converted to provide two studios and a workshop/storage room accessed from the beautiful Riyadh inspired courtyard with it's striking water feature and array of flowers. The generous grounds are stacked with fruit-bearing trees and bushes and with off-street parking for three/four vehicles, there's plenty of space both inside and out for family members of all ages. The current owners had planning permission granted for an extension which has since expired but the potential to extend is a real possibility. If you are looking for a property full of character, this stunning family home doesn't disappoint!



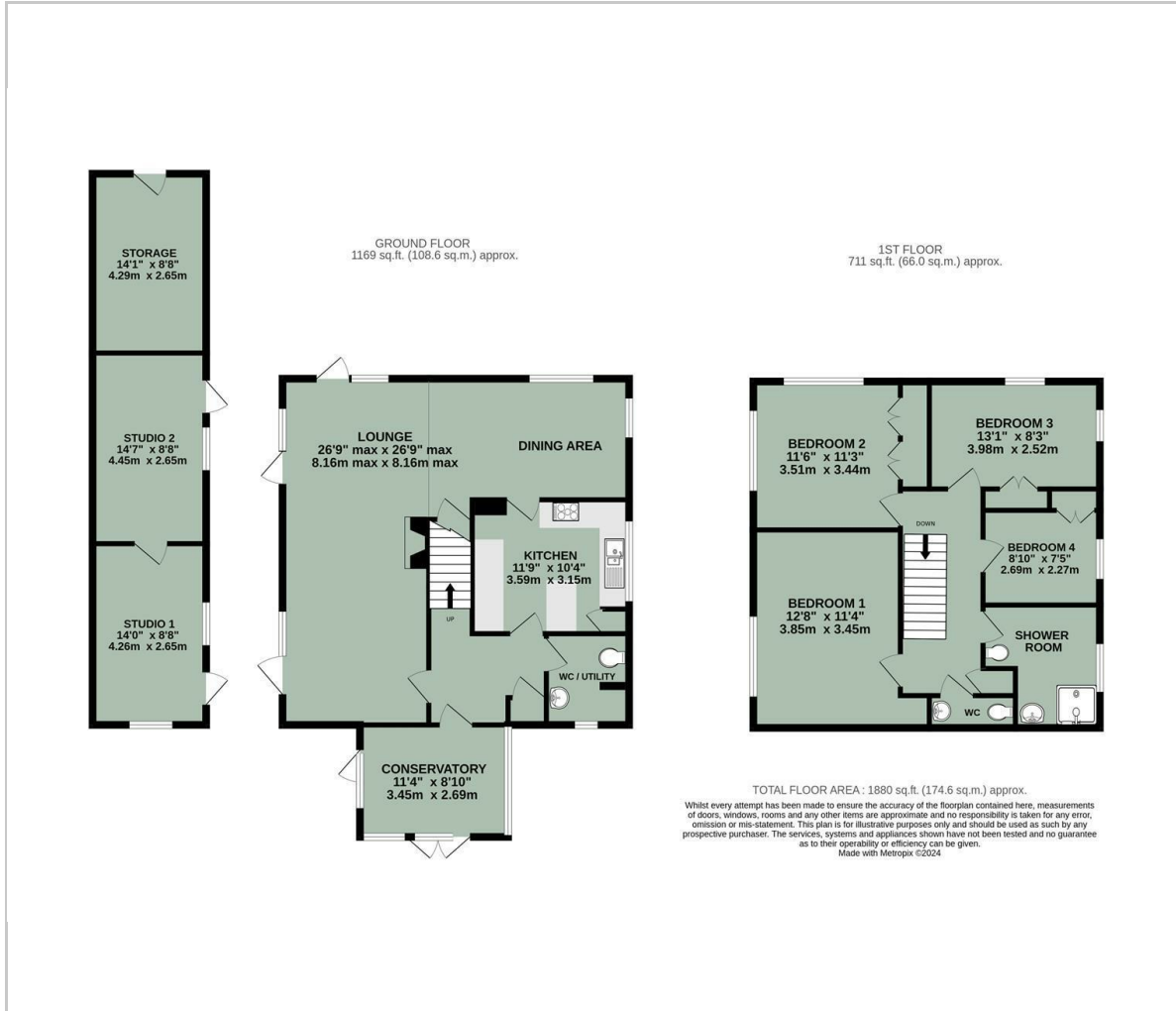


- FOUR-BEDROOM DETACHED FAMILY HOME
- MODERNIST INSPIRED ARCHITECTURAL BUILD
- GENEROUS WRAP-AROUND GARDEN & RIYADH STYLE COURTYARD
- OPEN PLAN LIVING SPACE
- TWO OUTDOOR STUDIOS & GENEROUS POTTING SHED
- KITCHEN GARDEN AREA
- PLENTY OF BUILT-IN STORAGE
- CUL-DE-SAC LOCATION
- OFF-STREET PARKING
- PREVIOUS PLANNING GRANTED FOR EXTENSION (Expired)

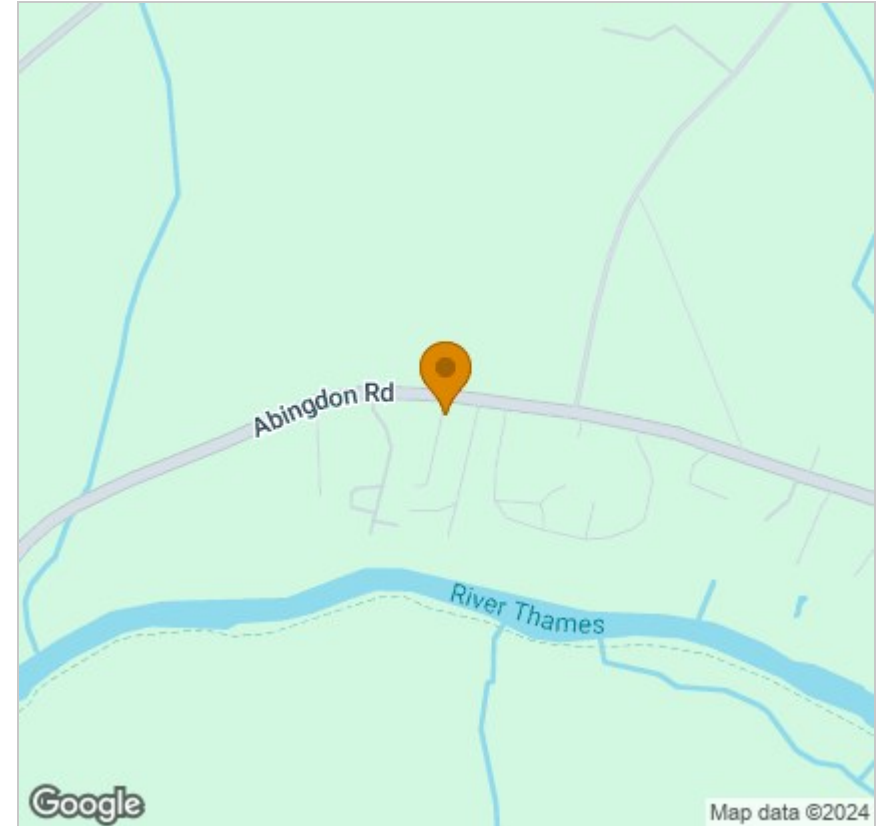


Energy Efficiency Graph

## Floor Plan



## Area Map



## Viewing

Please contact our In House Sales & Lettings Office on 01491 839999 opt.1 if you wish to arrange a viewing appointment for this property or require further information.

These particulars, whilst believed to be accurate are set out as a general outline only for guidance and do not constitute any part of an offer or contract. Intending purchasers should not rely on them as statements of representation of fact, but must satisfy themselves by inspection or otherwise as to their accuracy. No person in this firm's employment has the authority to make or give any representation or warranty in respect of the property.

28 St Martins Street, Wallingford, Oxfordshire, OX10 0AL  
Tel: 01491 839999 opt.1 Email: [sales@inhouseestateagents.co.uk](mailto:sales@inhouseestateagents.co.uk) [www.inhouseestateagents.co.uk](http://www.inhouseestateagents.co.uk)