

WE VALUE



YOUR HOME



Packhorse Lane, Marcham
£1,950 PCM

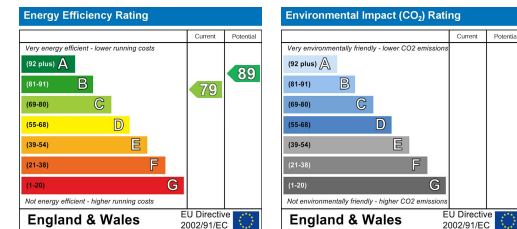


Available unfurnished from mid-July 2024 for a long-term let. With flexible accommodation arranged over three floors, this stylishly presented five-bedroom family home is located in the popular village of Marcham, known for amongst things, its connection with the WI. Built with Cotswold stone and boasting three bathrooms, one an ensuite to the master, plus a further cloakroom, a sunny south-facing rear garden, a garage supplied with power and lighting and parking to the rear of the property. All this conveniently positioned within easy access of local amenities and excellent transport links, including the A34. Council tax band.



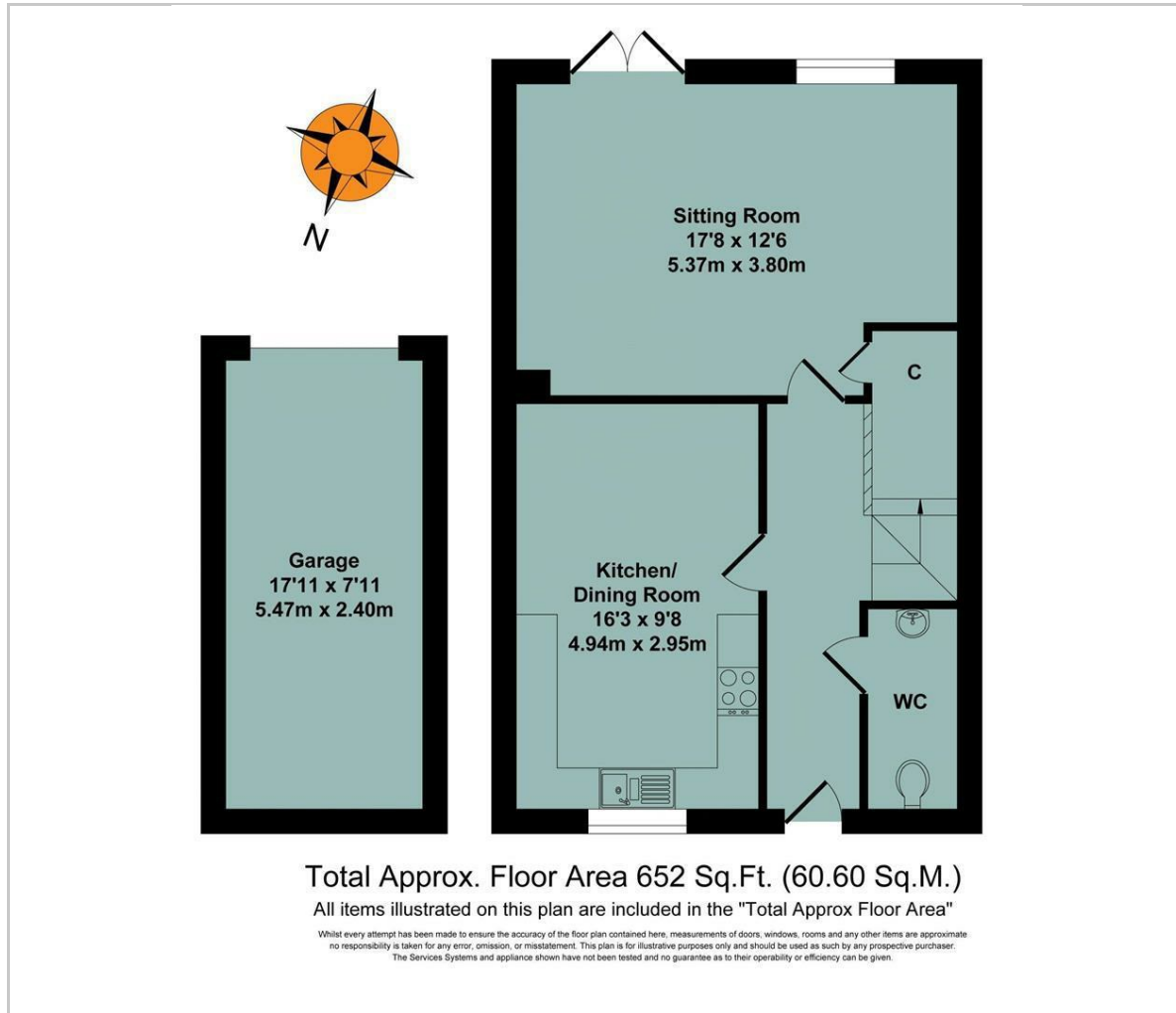


- AVAILABLE FROM MID JULY 2024 FOR LONG TERM LET
- ATTRACTIVELY PRESENTED INSIDE AND OUT
- FLEXIBLE ACCOMMODATION ARRANGED OVER THREE FLOORS
- BATHROOM, SHOWER ROOM & EN-SUITE
- CLOAKROOM
- SUNNY SOUTH-FACING REAR GARDEN
- GARAGE & PARKING
- CLOSE TO AMENITIES AND EXCELLENT TRANSPORT LINKS

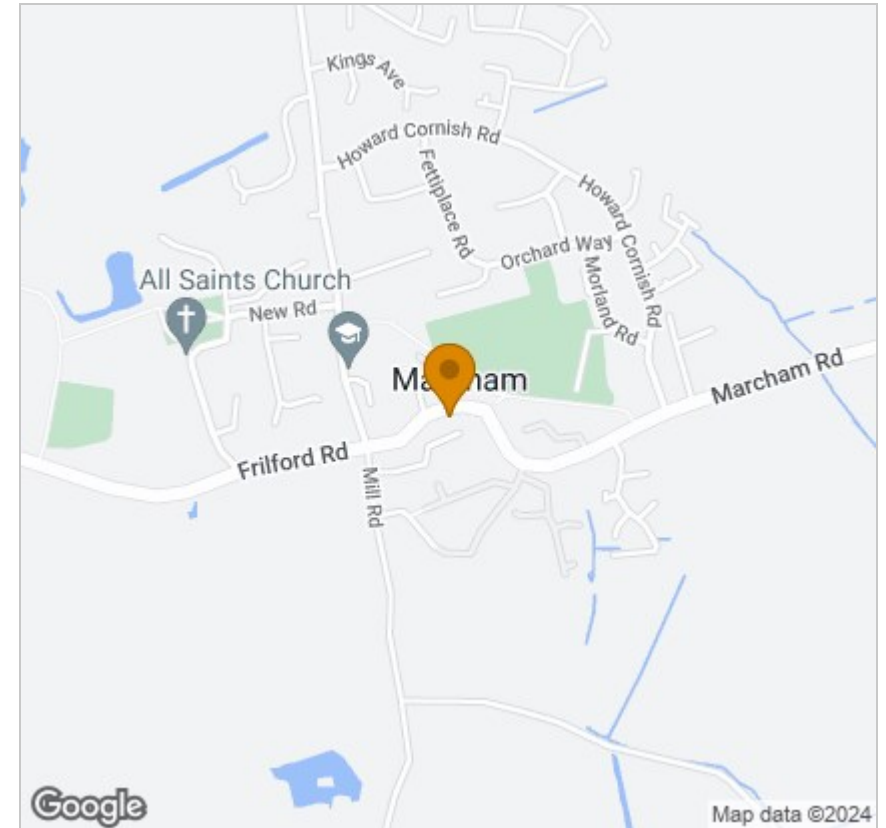


Energy Efficiency Graph

Floor Plan



Area Map



Viewing

Please contact our In House Sales & Lettings Office on 01491 839999 opt.1 if you wish to arrange a viewing appointment for this property or require further information.

These particulars, whilst believed to be accurate are set out as a general outline only for guidance and do not constitute any part of an offer or contract. Intending purchasers should not rely on them as statements of representation of fact, but must satisfy themselves by inspection or otherwise as to their accuracy. No person in this firm's employment has the authority to make or give any representation or warranty in respect of the property.

28 St Martins Street, Wallingford, Oxfordshire, OX10 0AL
Tel: 01491 839999 opt.1 Email: sales@inhouseestateagents.co.uk www.inhouseestateagents.co.uk