

WE VALUE



YOUR HOME



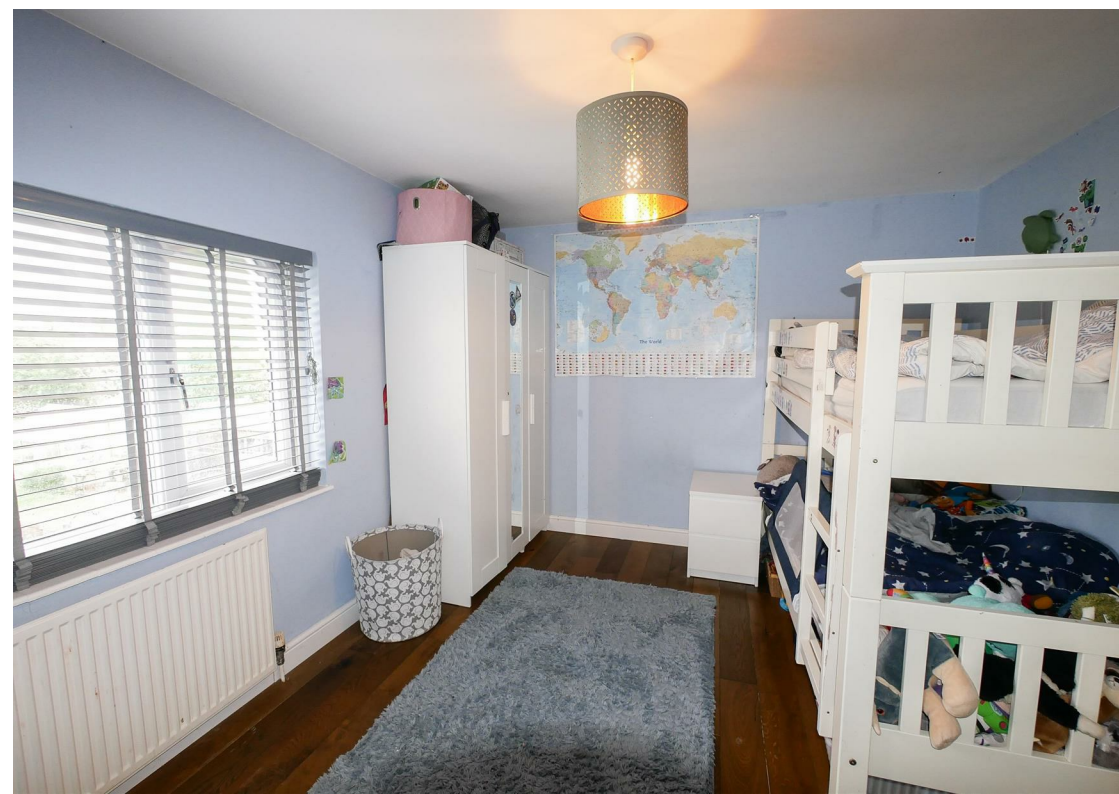
Wilding Road, Wallingford  
Offers Over £425,000



If you are looking for the convenience of being close to a town centre but love the tranquillity of plenty of outdoor space, this property could offer you the best of both worlds!

This family home comes with three bedrooms, a cosy lounge and a spacious open plan kitchen/diner with double doors opening up to the substantial south-facing rear garden. Not only does it provide enough space for kids to let off steam and entertaining family and friends, its stand out feature is the generous log cabin, perfect for use as a creative studio, or simply a peaceful retreat in your own back garden! And if this isn't impressive enough, the brick built outbuilding has been converted into a treatment room so if you want to run a business from home or just need a study away from any distractions, this addition is ideal.

Situated in a popular neighbourhood with the convenience of off-street parking for two vehicles, this property has plenty of offer!





## Floor Plan



## Area Map



## Viewing

Please contact our In House Sales & Lettings Office on 01491 839999 opt.1 if you wish to arrange a viewing appointment for this property or require further information.

These particulars, whilst believed to be accurate are set out as a general outline only for guidance and do not constitute any part of an offer or contract. Intending purchasers should not rely on them as statements of representation of fact, but must satisfy themselves by inspection or otherwise as to their accuracy. No person in this firm's employment has the authority to make or give any representation or warranty in respect of the property.

28 St Martins Street, Wallingford, Oxfordshire, OX10 0AL  
Tel: 01491 839999 opt.1 Email: sales@inhouseestateagents.co.uk www.inhouseestateagents.co.uk