

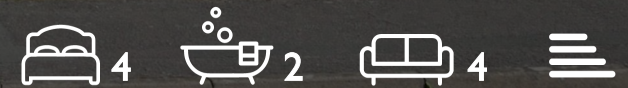
WE VALUE



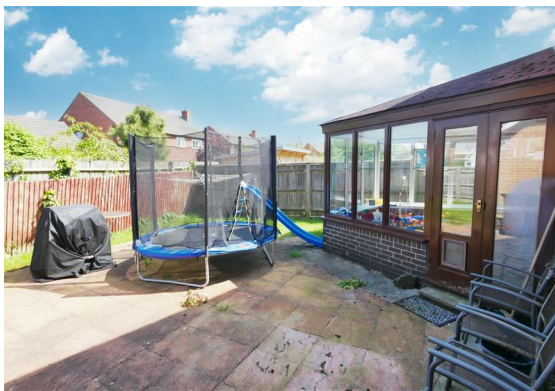
YOUR HOME



Verlam Grove, Didcot
£525,000

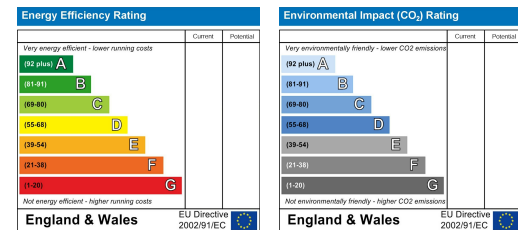


Located within a cul-de-sac, this generously proportioned family home features several reception rooms including a study and conservatory, four bedrooms with an en-suite to the main, an enclosed rear garden and both off-street parking and a double garage. If you are bursting at the seams and need more space, this versatile property could be the answer to your property needs!



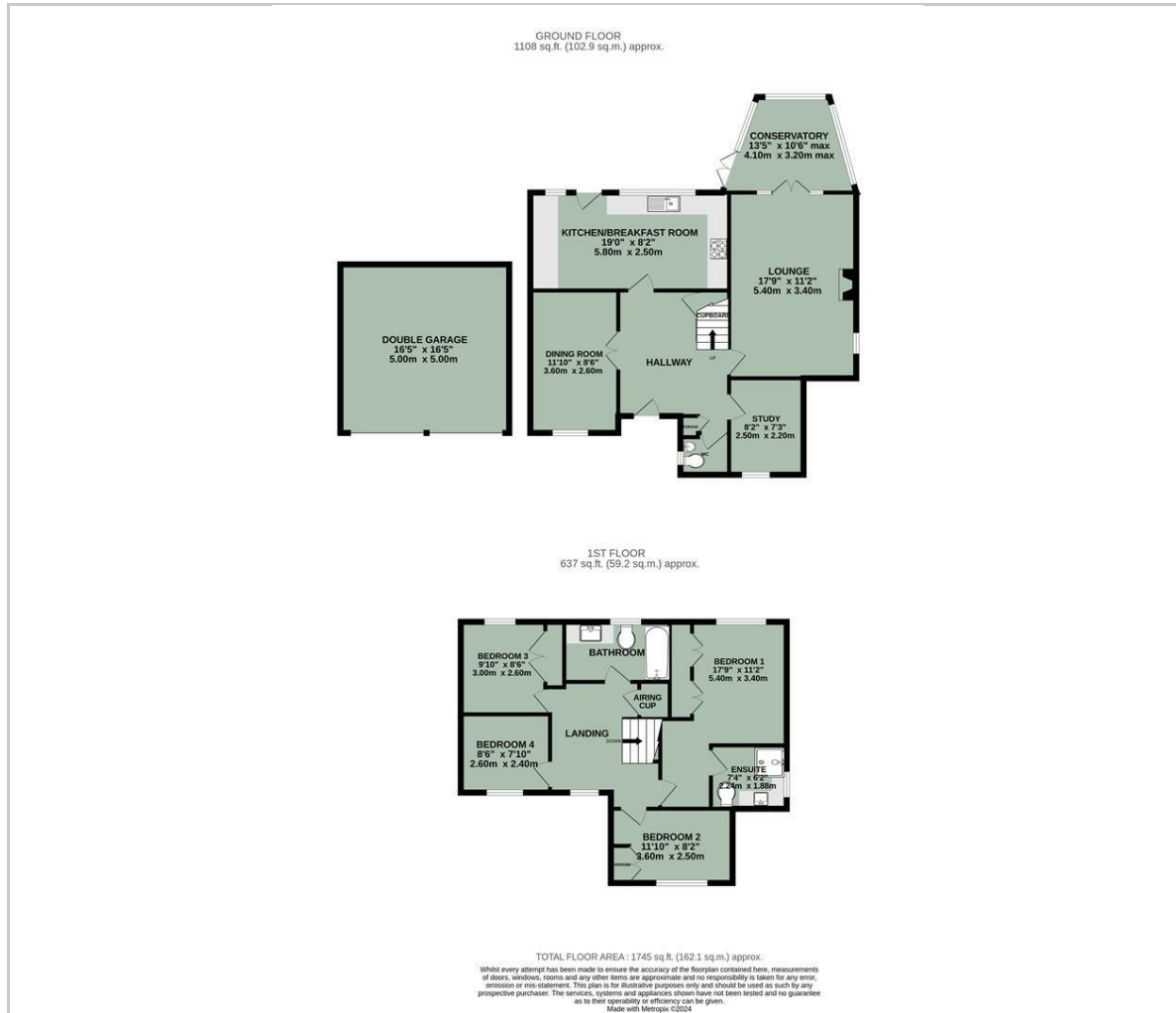


- DETACHED FAMILY HOME
- FOUR BEDROOMS
- FOUR RECEPTION ROOMS
- EN-SUITE & FAMILY BATHROOM
- DOUBLE GARAGE
- OFF-STREET PARKING

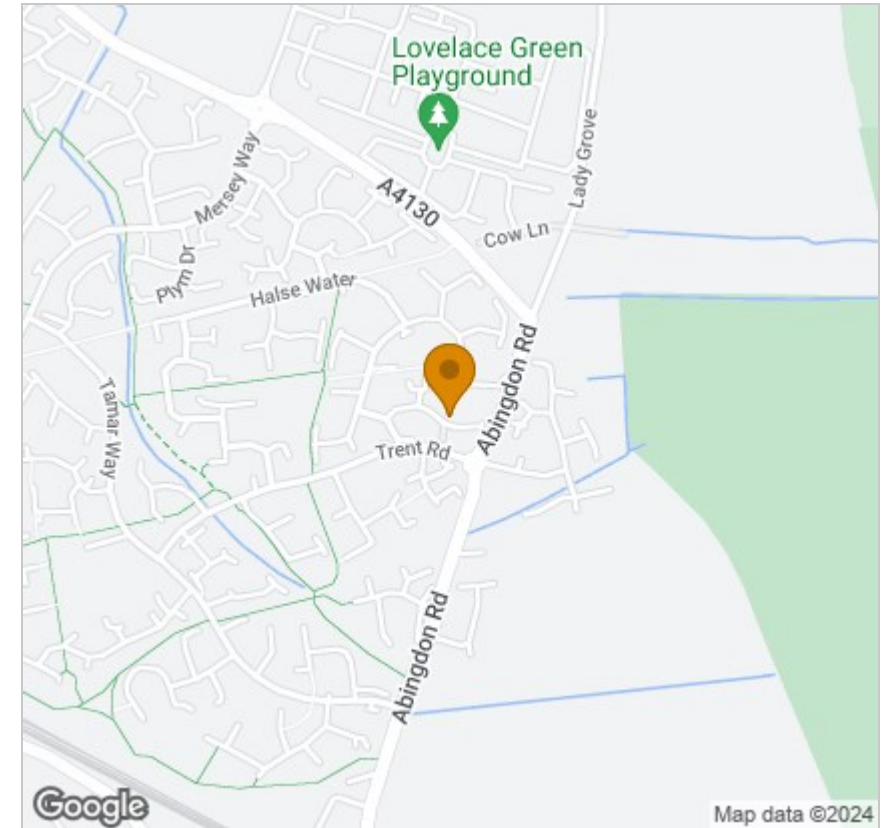


Energy Efficiency Graph

Floor Plan



Area Map



Viewing

Please contact our In House Sales & Lettings Office on 01491 839999 opt.1 if you wish to arrange a viewing appointment for this property or require further information.

These particulars, whilst believed to be accurate are set out as a general outline only for guidance and do not constitute any part of an offer or contract. Intending purchasers should not rely on them as statements of representation of fact, but must satisfy themselves by inspection or otherwise as to their accuracy. No person in this firm's employment has the authority to make or give any representation or warranty in respect of the property.

28 St Martins Street, Wallingford, Oxfordshire, OX10 0AL
Tel: 01491 839999 opt.1 Email: sales@inhouseestateagents.co.uk www.inhouseestateagents.co.uk