

WE VALUE



YOUR HOME



Farm Close, Chalgrove  
Offers Over £325,000





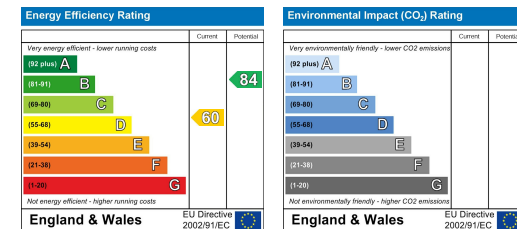
Located within a cul-de-sac in the village of Chalgrove, this three-bedroom family home is well-presented throughout and benefits from both front and rear gardens so it gets the best of the sun! Featuring good sized rooms including a lounge and separate dining room, three bedrooms, one of which could easily be repurposed into a study if preferred, an enclosed rear garden with summerhouse and both off-street parking and a garage. Whether you are looking to settle down in this popular location within easy reach of transport links to major cities or seeking a new investment opportunity, this property could easily cater to your needs.





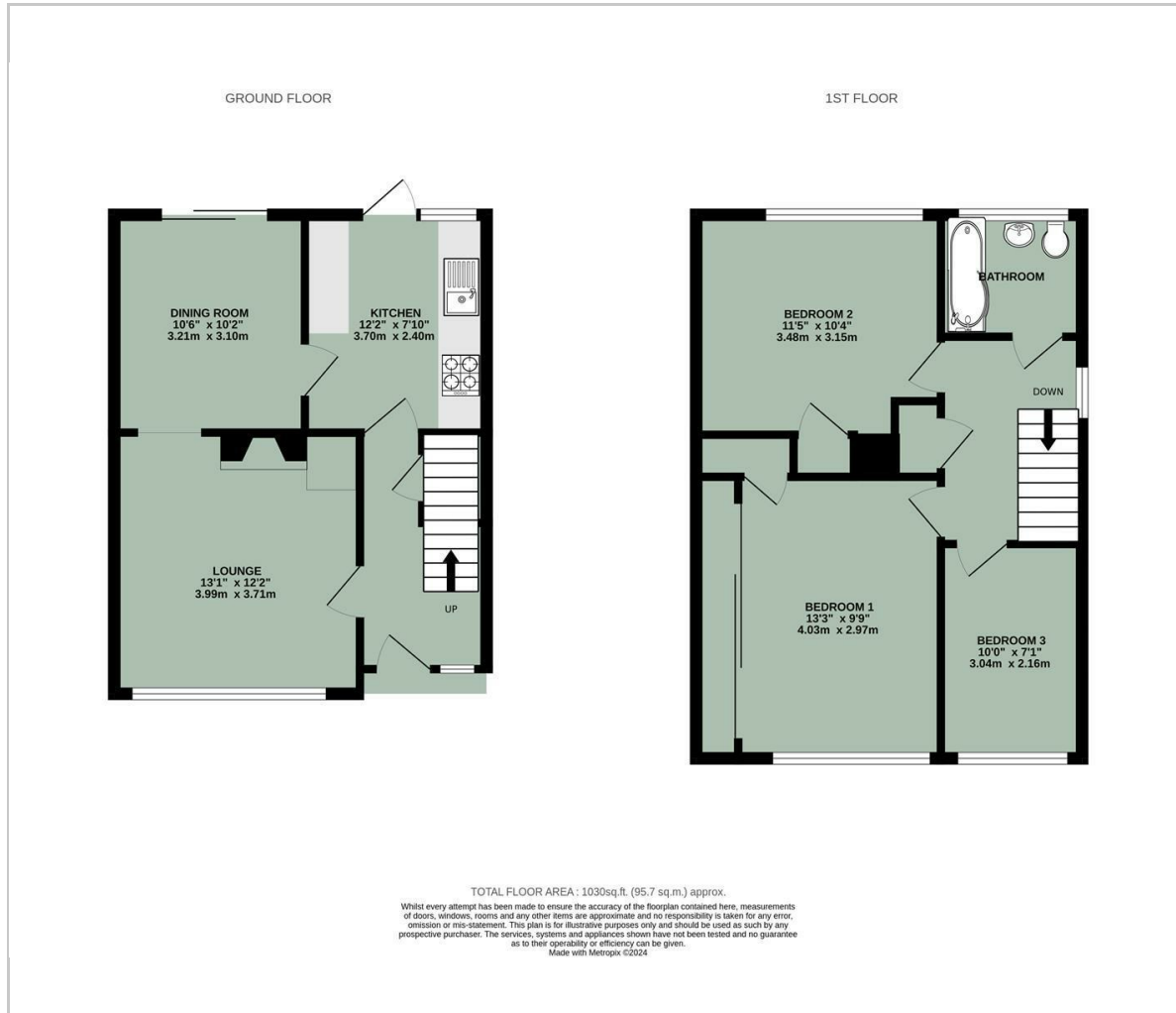


- THREE BEDROOM FAMILY HOME
- FRONT & REAR GARDENS
- GARAGE & PARKING
- SPACIOUS LOUNGE
- SEPARATE DINING ROOM
- THREE GOOD SIZED BEDROOMS
- POPULAR VILLAGE LOCATION
- EASY ACCESS TO AMENITIES & MAJOR TRANSPORT LINKS

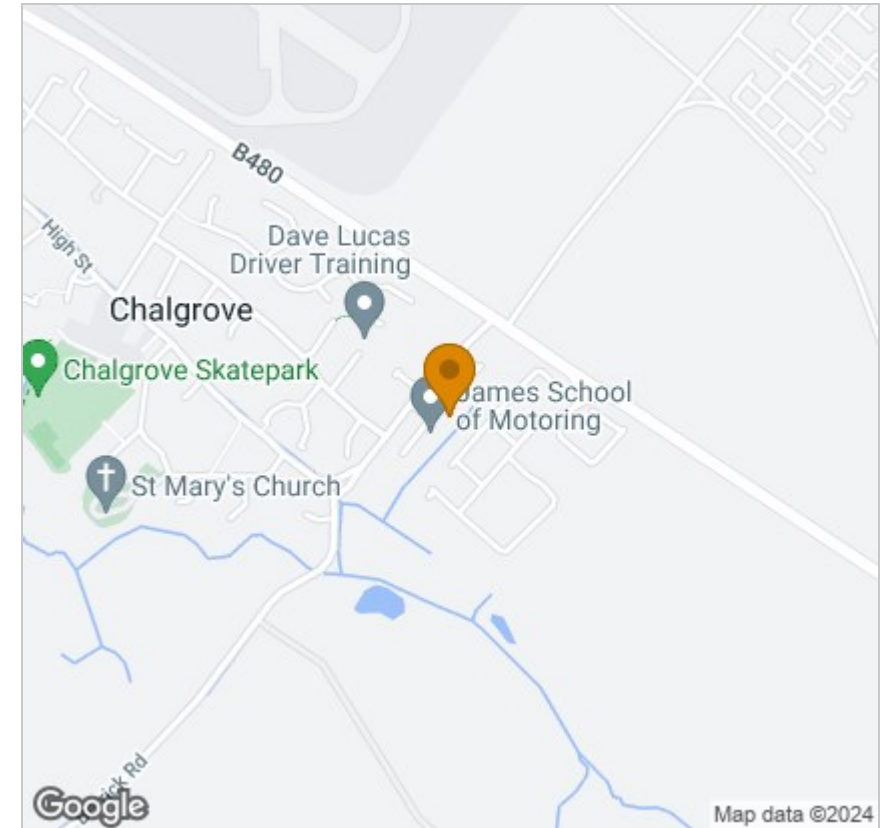


Energy Efficiency Graph

## Floor Plan



## Area Map



## Viewing

Please contact our In House Sales & Lettings Office on 01491 839999 opt.1 if you wish to arrange a viewing appointment for this property or require further information.

These particulars, whilst believed to be accurate are set out as a general outline only for guidance and do not constitute any part of an offer or contract. Intending purchasers should not rely on them as statements of representation of fact, but must satisfy themselves by inspection or otherwise as to their accuracy. No person in this firms employment has the authority to make or give any representation or warranty in respect of the property.

28 St Martins Street, Wallingford, Oxfordshire, OX10 0AL  
Tel: 01491 839999 opt.1 Email: [sales@inhouseestateagents.co.uk](mailto:sales@inhouseestateagents.co.uk) [www.inhouseestateagents.co.uk](http://www.inhouseestateagents.co.uk)