

WE VALUE



YOUR HOME



High Street, Dorchester-on-Thames
£1,550 Per Month

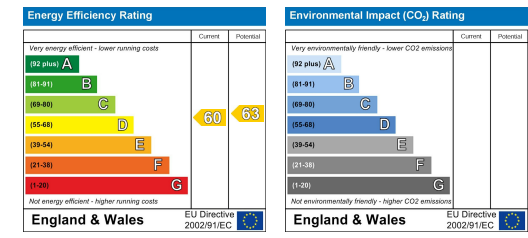


This recently extended and refurbished 17th Century Grade II listed property has undergone a remarkable renovation and high-end attributes throughout the home, including underfloor heating, modern kitchen & bathrooms, and bi-folding doors in the lounge/diner that lead to a secluded rear garden. Measuring approximately 1255sq ft. and located in the picture-perfect village of Dorchester-on-Thames with a Village shop and hotel conveniently positioned within 30 yards of the property. Available immediately for long term let, un-furnished.



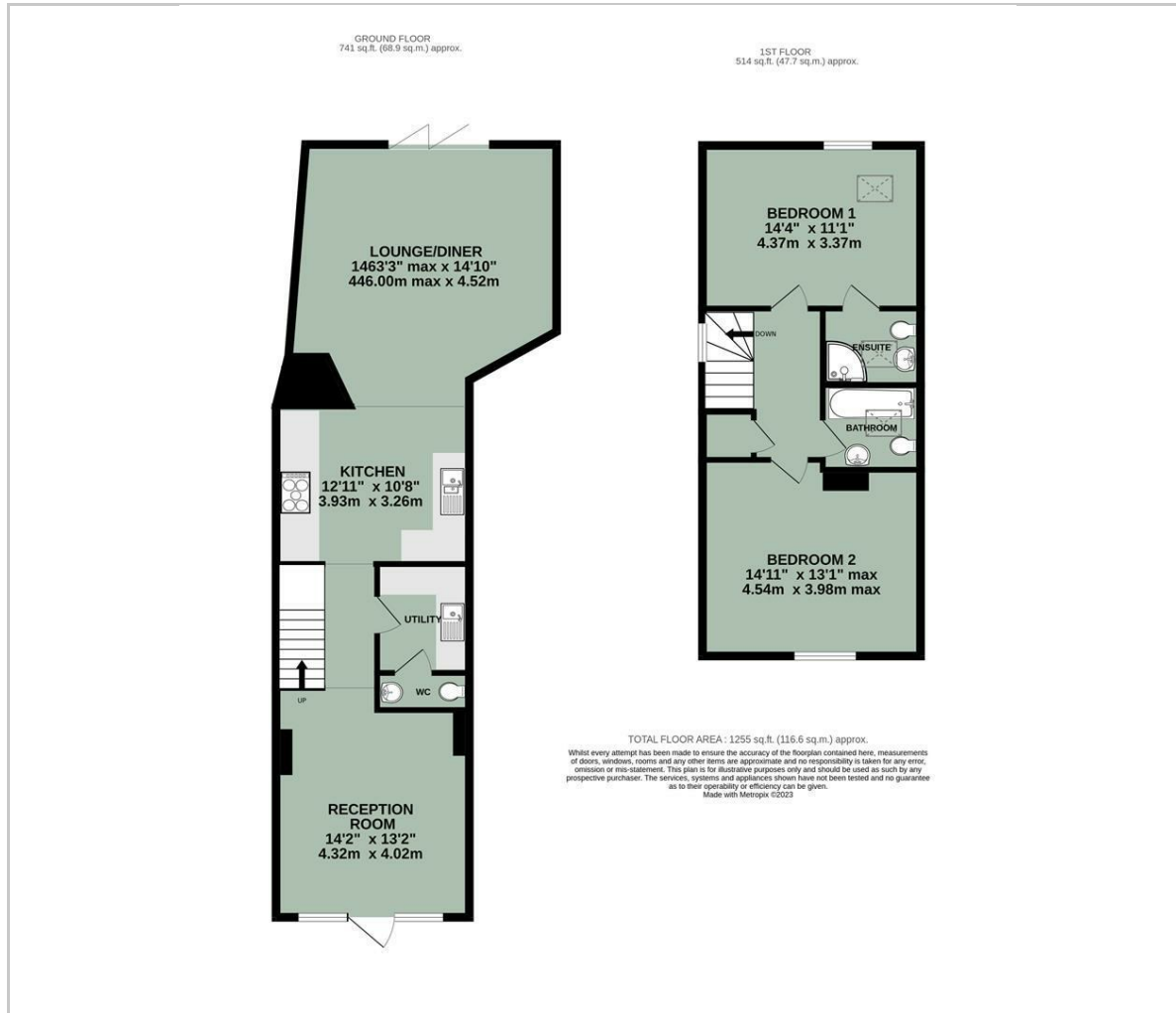


- FULLY RENOVATED & REFURBISHED TO A HIGH STANDARD
- UNDERFLOOR HEATING
- APPROX 1255 SQ FT OF FLOOR SPACE
- EN-SUITE TO THE MASTER
- TWO DOUBLE BEDROOMS
- GENEROUS LIVING SPACE
- UTILITY & CLOAKROOM
- PRIVATE REAR GARDEN
- AVAILABLE IMMEDIATELY, UN-FURNISHED

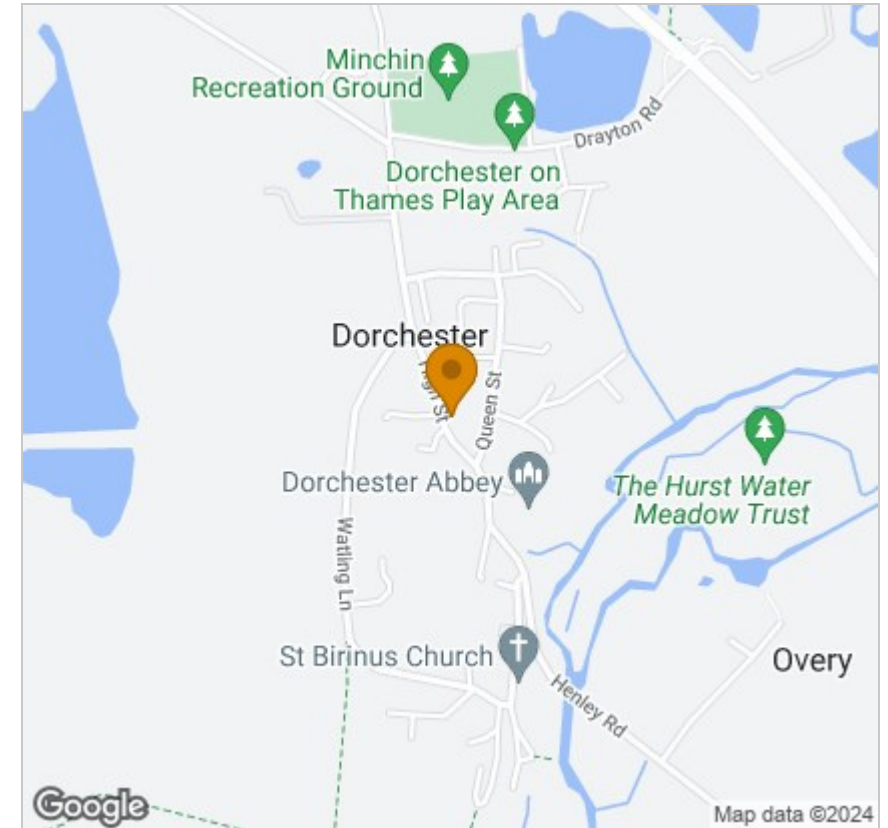


Energy Efficiency Graph

Floor Plan



Area Map



Viewing

Please contact our In House Sales & Lettings Office on 01491 839999 opt.1 if you wish to arrange a viewing appointment for this property or require further information.

These particulars, whilst believed to be accurate are set out as a general outline only for guidance and do not constitute any part of an offer or contract. Intending purchasers should not rely on them as statements of representation of fact, but must satisfy themselves by inspection or otherwise as to their accuracy. No person in this firm's employment has the authority to make or give any representation or warranty in respect of the property.

28 St Martins Street, Wallingford, Oxfordshire, OX10 0AL
Tel: 01491 839999 opt.1 Email: sales@inhouseestateagents.co.uk www.inhouseestateagents.co.uk