

WE VALUE



YOUR HOME



Market Place, Wallingford  
£259,950





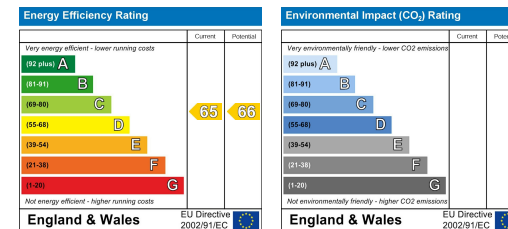
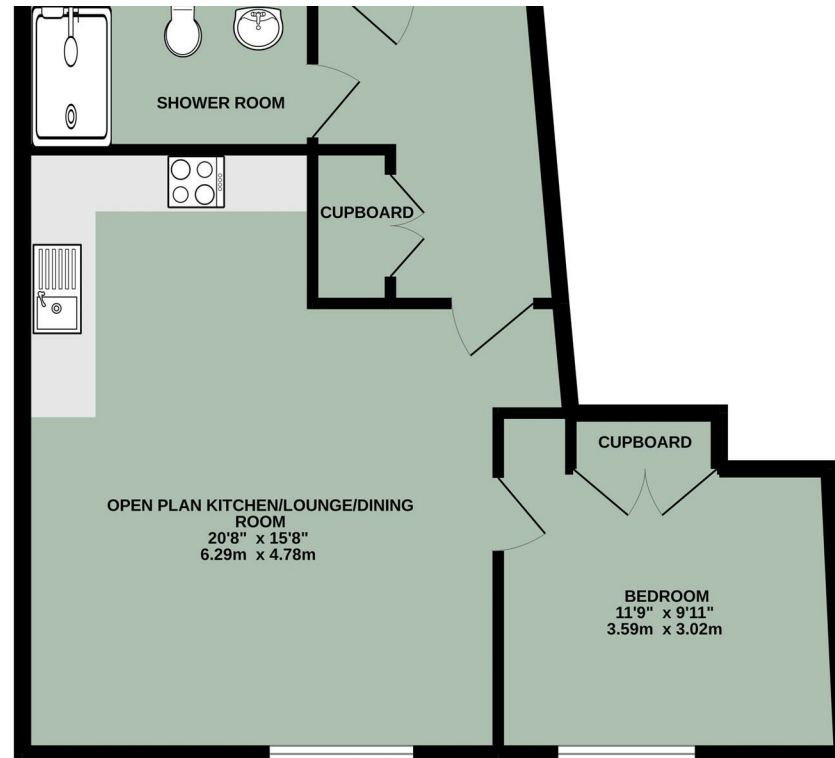
Located within the heart of Wallingford town centre, this spacious apartment looks out over views of the town and features a stylish open plan living area and kitchen, a generous double bedroom, a fully fitted shower room and allocated parking to the rear with an electric car charge point. With no onward chain, this apartment would make an ideal property for investors or first time buyers looking for a convenient location with plenty of amenities right on their door step.





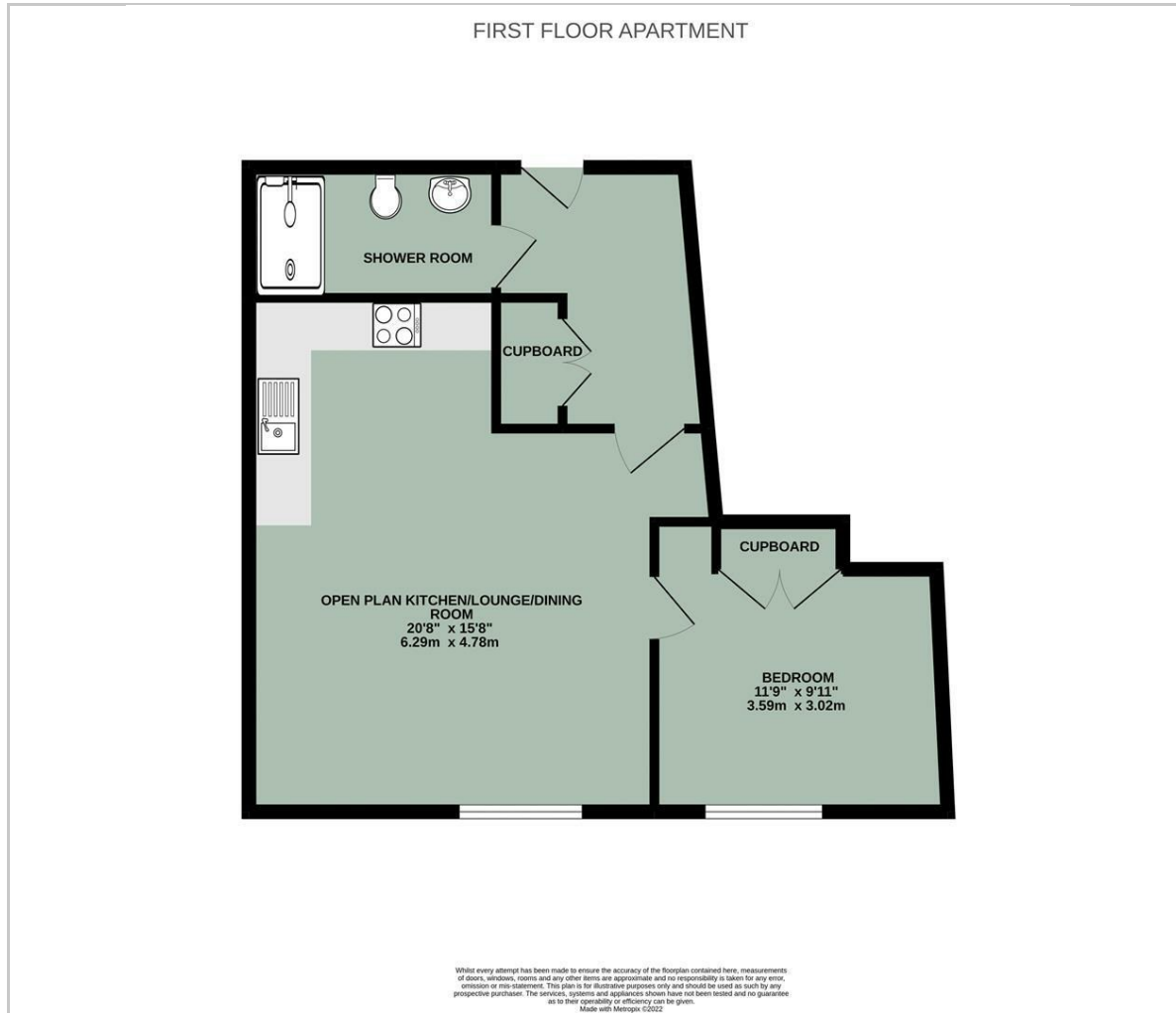


- INVESTMENT OPPORTUNITY
- OPEN PLAN LIVING AREA & INTEGRATED KITCHEN
- ALLOCATED PARKING
- ELECTRIC VEHICLE CHARGING POINT
- NEWLY FITTED THROUGHOUT
- DOUBLE BEDROOM
- NO ONWARD CHAIN
- TOWN CENTRE LOCATION



Energy Efficiency Graph

## Floor Plan



## Area Map



## Viewing

Please contact our In House Sales & Lettings Office on 01491 839999 opt.1 if you wish to arrange a viewing appointment for this property or require further information.

These particulars, whilst believed to be accurate are set out as a general outline only for guidance and do not constitute any part of an offer or contract. Intending purchasers should not rely on them as statements of representation of fact, but must satisfy themselves by inspection or otherwise as to their accuracy. No person in this firm's employment has the authority to make or give any representation or warranty in respect of the property.

28 St Martins Street, Wallingford, Oxfordshire, OX10 0AL  
Tel: 01491 839999 opt.1 Email: [sales@inhouseestateagents.co.uk](mailto:sales@inhouseestateagents.co.uk) [www.inhouseestateagents.co.uk](http://www.inhouseestateagents.co.uk)