

**Guide Price £299,950**

**5 Bowlinger Court, Tower Street, Exmouth, EX8 1FG**



- Brand New Town Centre Apartment • Bespoke Development of 19 Individual Apartments
- Walk To Town, Train Station, Seafront & Marina • Double Glazing & Air Source Heat Pump Electric Heating • 2 Double Bedrooms & Bathroom • Open Plan Living Room / Kitchen
- Integrated Kitchen Appliances • 999 Year Lease, Lift Access To All Floors



## EXMOUTH – WHERE THE RIVER EXE MEETS THE

Exmouth is a thriving East Devon coastal town, situated on the UNESCO World Heritage Jurassic Coast, a 95-mile long stretch of coastline in southern England, situated within the counties of Dorset and Devon. Twinned with Dinan in France and Langerwehe in Germany, there are 2 Miles of Golden sand, dotted with Rock pools and fringed with a Promenade. Orcombe Point has the oldest rocks on this World Heritage Site which are located on the South Western point. Along the Promenade, a mixture of activities can be found including a bowling Alley with shop outlets, Exmouth Pavillions with its variety of shows, Restaurants, Watersports Centre and family activity facilities.

Exmouth`s lively centre bustles with shops of all kinds, focusing on the pedestrianised Magnolia Centre, with its well known High Street names, and The Strand Gardens, where there are pubs, bistros, bars and a cinema.

Being a resort, it offers many activites including football, rugby, cricket, tennis, golf, fishing, riding and all Watersports activities.

The town has all the amenities including schools, a hospital, train station, doctors surgeries, Sports Centres and a Swimming Pool. A frequent bus service connects with surrounding villages, towns and the Cathedral City of Exeter, just 10 Miles along the A376. This in turn gives access to the M5, A30 and A303. Exeter International Airport is also within 10 Miles.

### Location

Bowlinger Court, Tower Street is situated within the heart of Exmouth Town Centre, overlooking The Strand Gardens and within walking distance of Exmouth Seafont, Marina, Train Station and Manor Gardens.

### Property

Apartment 5 Bowlinger Court is a 2 double bedroom, ground and lower ground floor apartment. Benefits of the property include:

Kitchens will have integrated oven, hob, washer / dryers, fridge & freezers in all apartments plus dishwasher in the 2 bedroom apartments.

Floor coverings: Carpets (Grey / brown) in bedrooms and Karndean flooring in kitchen / bathroom / shower room / hallways

Oak internal doors

Gated entrance from Queen Street and communal Bike rack outside.

Lift and stair access to all floors in main Tower Street block

All apartments will benefit from:

Air source heat pumps (electric)

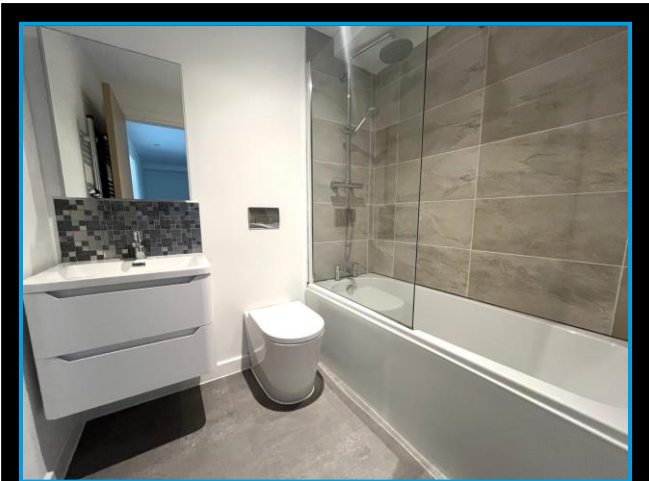
Under floor heating

Aluminium window frames

999 year lease

Service charge will be c. £1,500 to £2,000 per annum





## Dimensions

### Ground Floor

#### Entrance Hall

Staircase leading down to lower ground floor. Doors leading to:

#### Bedroom 1 12'5" (3.78m) Max x 10'6" (3.2m) Max

Dual aspect having window to front and window to side. Brand new fitted carpet.

#### Bedroom 2 12'5" (3.78m) Max x 9'1" (2.77m) Max

Window to front. Brand new fitted carpet.

#### Bathroom

White bathroom suite with a mains fed shower over, low level WC and vanity wash hand basin. Kardean flooring with under floor heating.

### Lower Ground Floor

#### Hall

Door leading to:

#### Open Plan Living Room / Kitchen 24'4" (7.42m) Max x 12'2" (3.71m) Plus Recess

Dual aspect having 2 windows to front and window to side. Kitchen will include integrated oven, hob, washer / dryer, dishwasher and fridge / freezer. Useful under stairs storage cupboard. Access to store room that house the water tank and trip switch fuse box.

#### Tenure

The property is LEASEHOLD. We understand a 999 year lease will be granted with combined Service Charges & Buildings Insurance of c. £1,500 to £2,000 per annum

#### Services

Mains Water, Drainage and Electric connected.

#### Mortgage Assistance

We are pleased to recommend Meredith Morgan Taylor, who would be pleased to help no matter which estate agent you finally buy through. For a free initial chat please contact us on 01395 222350 to arrange an appointment

Your home may be repossessed if you do not keep up repayments on your mortgage

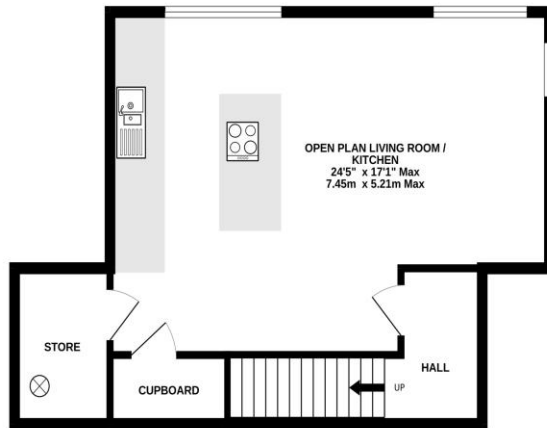
Meredith Morgan Taylor Ltd is an appointed representative of Openwork Limited which is authorised and regulated by the Financial Conduct Authority (FCA)

#### Agents Note

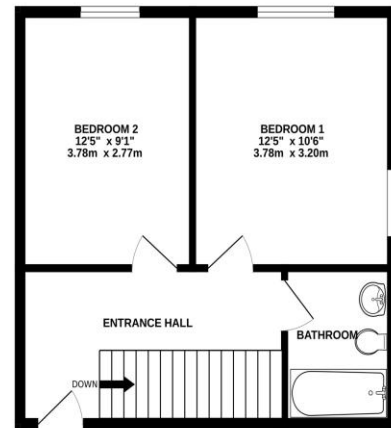
Please note that Links Estate Agents take no responsibility for any inaccuracies within any text or imagery within any literature relating to any of the 19 apartments within Bowlinger Court, Exmouth.



LOWER GROUND FLOOR



GROUND FLOOR

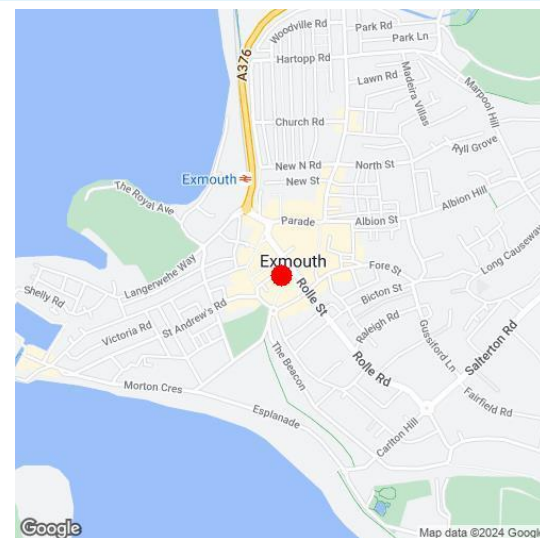


BOWLING COURT, EXMOUTH

Whilst every attempt has been made to ensure the accuracy of the floorplan contained here, measurements of doors, windows, rooms and any other items are approximate and no responsibility is taken for any error, omission or mis-statement. This plan is for illustrative purposes only and should be used as such by any prospective purchaser. The services, systems and appliances shown have not been tested and no guarantee as to their operability or efficiency can be given.  
Made with Metropix ©2024

### Directions

On Foot, from our Prominent Town Centre office, proceed down Rolle Street turning left into Tower Street. The building will be found on the left hand side, overlooking The Strand Gardens.



Viewing Strictly By Appointment Only - Contact The Links Team Via:  
 TEL: 01395 222350 Email: exmouth@linksestateagents.co.uk WEB: [www.linksestateagents.co.uk](http://www.linksestateagents.co.uk)

Please note we have not carried out a detailed survey nor have we tested any apparatus, fixtures, fittings, or services. Interested parties must undertake their own investigation into the working order of these items. All measurements are approximate and should be used as a guideline ONLY. Photographs provided for guidance only. If there are important matters which are likely to affect your decision to buy, please phone us before viewing the property.