

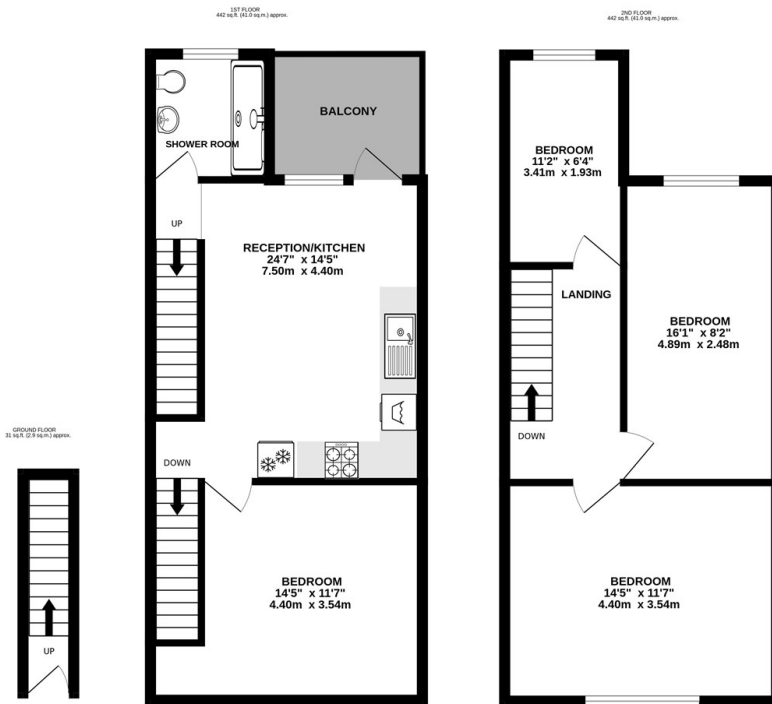
Hammonds



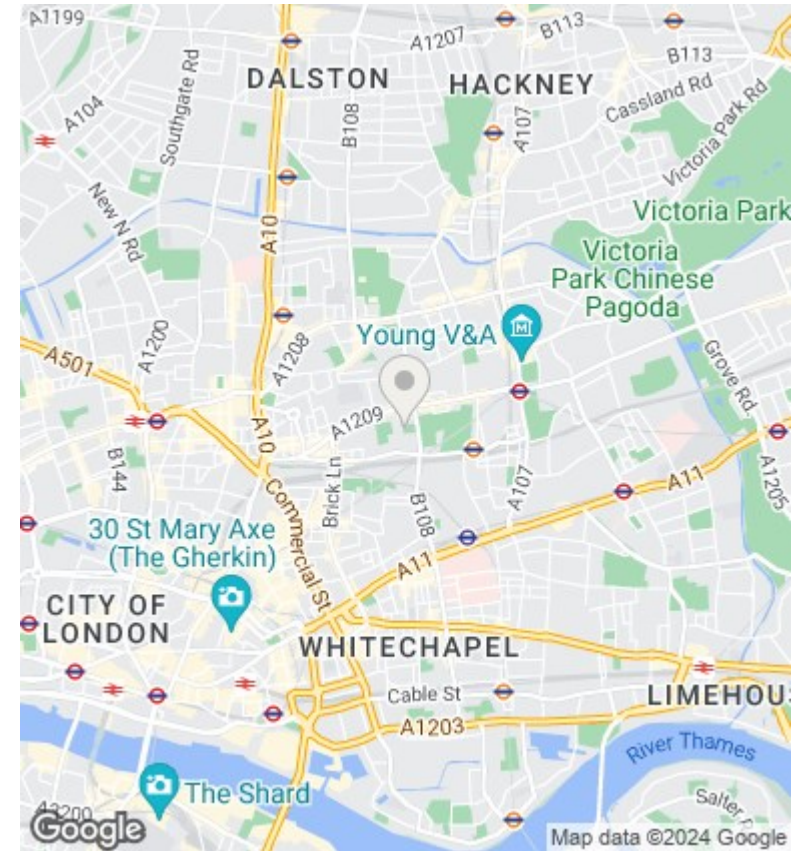
334a, Bethnal Green Road, London, E2 0AG

£3,600 PCM

- Minutes to Bethnal green Station
- Close to Brick Lane
- 4 Double bedrooms
- Open Plan



TOTAL FLOOR AREA : 915 sq.ft. (85.0 sq.m.) approx.
 Whilst every attempt has been made to ensure the accuracy of the floorplan contained here, measurements of doors, windows, rooms and any other items are approximate and no responsibility is taken for any error, omission or mis-statement. This plan is for illustrative purposes only and should be used as such by any prospective purchaser. The services, systems and appliances shown have not been tested and no guarantee as to their operability or efficiency can be given.
 Made with Metropix ©2023



Directions

Viewings

Viewings by arrangement only. Call 02089802226 to make an appointment.

Council Tax Band

EPC Rating:

D

Energy Efficiency Rating		
	Current	Potential
<i>Very energy efficient - lower running costs</i>		
(92 plus) A		
(81-91) B		
(69-80) C		69
(55-68) D	56	
(39-54) E		
(21-38) F		
(1-20) G		
<i>Not energy efficient - higher running costs</i>		
England & Wales	EU Directive 2002/91/EC	