

FOR SALE

The Stables, Robin Hill Farm East, Standish, WN6 0PS



The Stables, Robin Hill Farm East, Standish, WN6 0PS

Eco-friendly four-bed home with character in exclusive gated setting.

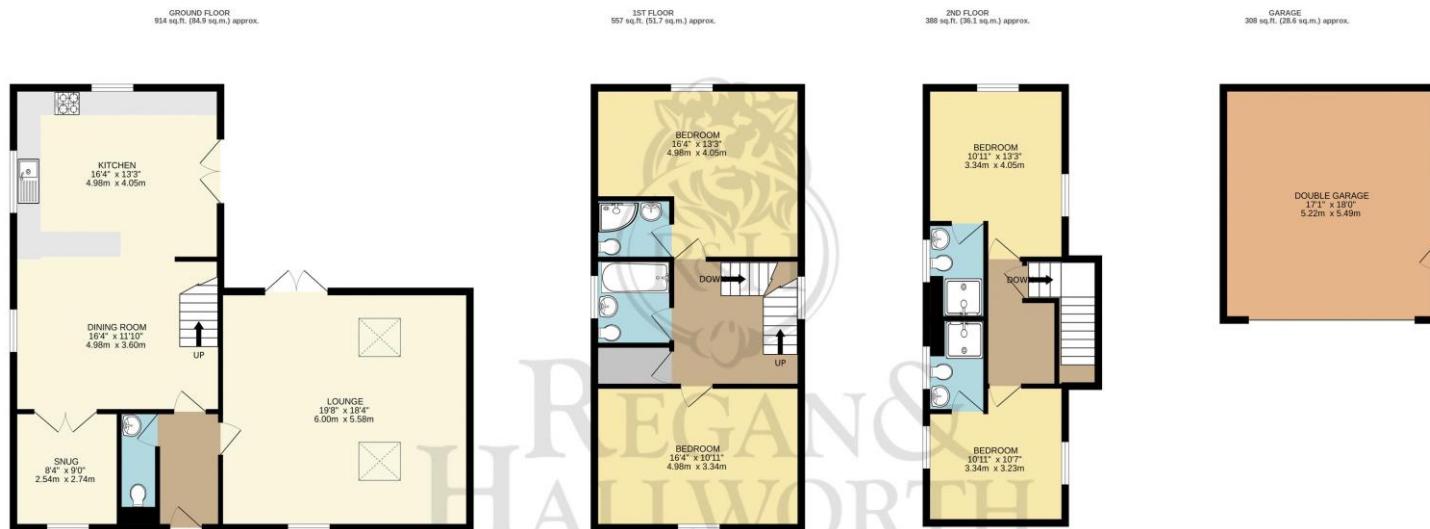


- Distinctive family home
- Exclusive farmhouse development
- 4 double bedrooms & 4 bathrooms
- Sweeping driveway & double garage
- Underfloor heating
- Electronic gated entrance
- Large & very private garden
- 2167 SQ.FT. / Freehold

Set within an exclusive gated farmhouse development, The Stables is a distinctive and eco-conscious home offering spacious four-bedroom accommodation arranged over three impressive and character-filled floors. Positioned at the end of a private, little-known lane off Robin Hill Lane in Standish, this exceptional home occupies the largest plot in the development, approaching one-third of an acre, and is the only residence to benefit from its own private gated driveway, while the remaining homes share a communal courtyard. Thoughtfully designed for family living, the home features two upper floors, each with two double bedrooms and a bathroom, providing privacy and flexibility. The extensive ground floor which totals over 900 square feet of living space alone is centred around an inviting open-plan layout, comprising a welcoming reception hallway with cloakroom/WC, leading into a spacious dining area and a well-appointed kitchen. The kitchen features a comprehensive range of modern Shaker-style units, a breakfast bar, and opens into a cosy snug/sitting room via double doors. Completing the ground floor is a striking lounge that perfectly balances rustic charm and modern comfort, with soaring ceilings and a beautiful exposed brick fireplace with a multi-fuel stove. The grounds and setting of this property are a true highlight. Accessed via a secure gated entrance into the development, the home benefits from its own set of electric gates, offering enhanced privacy and security. A sweeping driveway leads to a detached double garage and ample hardstanding for parking. The mature, beautifully landscaped gardens wrap around the sides and rear of the home plus there is a communal courtyard to the front. Additional features include double glazing and central heating with an air source heat pump and underfloor heating, ensuring high energy efficiency. Internal viewings are highly recommended to fully appreciate the space, setting, and quality on offer in this unique family home.

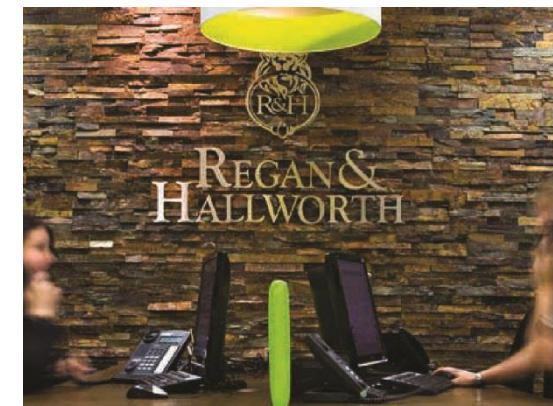






The Professional Estate Agents

TOTAL FLOOR AREA : 2167 sq.ft. (201.3 sq.m.) approx.
Whilst every attempt has been made to ensure the accuracy of the floorplan contained here, measurements of doors, windows, rooms and any other items are approximate and no responsibility is taken for any error, omission or mis-statement. This plan is for illustrative purposes only and should be used as such by any prospective purchaser. The services, systems and appliances shown have not been tested and no guarantee as to their operability or efficiency can be given.
Made with Metropix ©2025



WIGAN OFFICE

4-6 Library Street, Wigan
Lancashire WN1 1NN
01942 205555
wigan@reganandhallworth.com

STANDISH OFFICE

8 High Street, Standish
Wigan WN6 0HL
01257 473727
standish@reganandhallworth.com

PARBOLD OFFICE

5-7 Station Road, Parbold Village
Lancashire WN8 7NU
01257 464644
parbold@reganandhallworth.com

rightmove

onTheMarket.com

The Property Ombudsman

LR Finance

We do our best to ensure that our sales particulars are accurate and are not misleading. We also ask our clients to check their own sales particulars and verify the information contained in them is correct. However, fixtures and fittings and appliances have not been tested and therefore no guarantee can be given that they are in working order. All measurements and land sizes are quoted approximately. **Tenure** - Regan & hallworth have not had sight of the title documents and therefore the buyer is advised to obtain verification from their solicitors or surveyor. **Council Tax** - You are advised to contact the local authority for details. **Wigan:** 01942 244991 | **West Lancashire:** 01695 585258 | **Chorley:** 01257 515151. If there is any point of particular interest to you please contact us and we will be pleased to check the information.

@reganhallworth

Regan & Hallworth

@reganandhallworth

@reganhallworth

www.reganandhallworth.com