

**FOR SALE**

Athertons Farm Cottage, Hall Lane, Billinge, WN5 7XA

**REGAN & HALLWORTH**  
The Professional Estate & Letting Agents

ESTD  
1996





## Athertons Farm Cottage, Hall Lane, Billinge, WN5 7XA

*Beautiful 18th Century stone cottage offering a sizeable 1900 SQFT of space.*



Nestled within a beautiful, mature and private plot that is tucked away down a little-known country lane & offering a generous 1903 square feet of superb living space, Athertons Farm Cottage is a true one off that demands a closer inspection. Enjoying lots of pretty, eye-catching kerb appeal & brimming with beautiful character throughout - this immaculate stone cottage dates back to the early 1700s & offers lovely internal presentation throughout and must be viewed to be fully appreciated. Located just off Winstanley Road in Billinge, in a quiet picturesque semi-rural setting that conveniently enjoys pleasant aspects whilst also resting within easy reach of the area's numerous shops, schools, trails and walks, plus transport links including a train station & motorways.

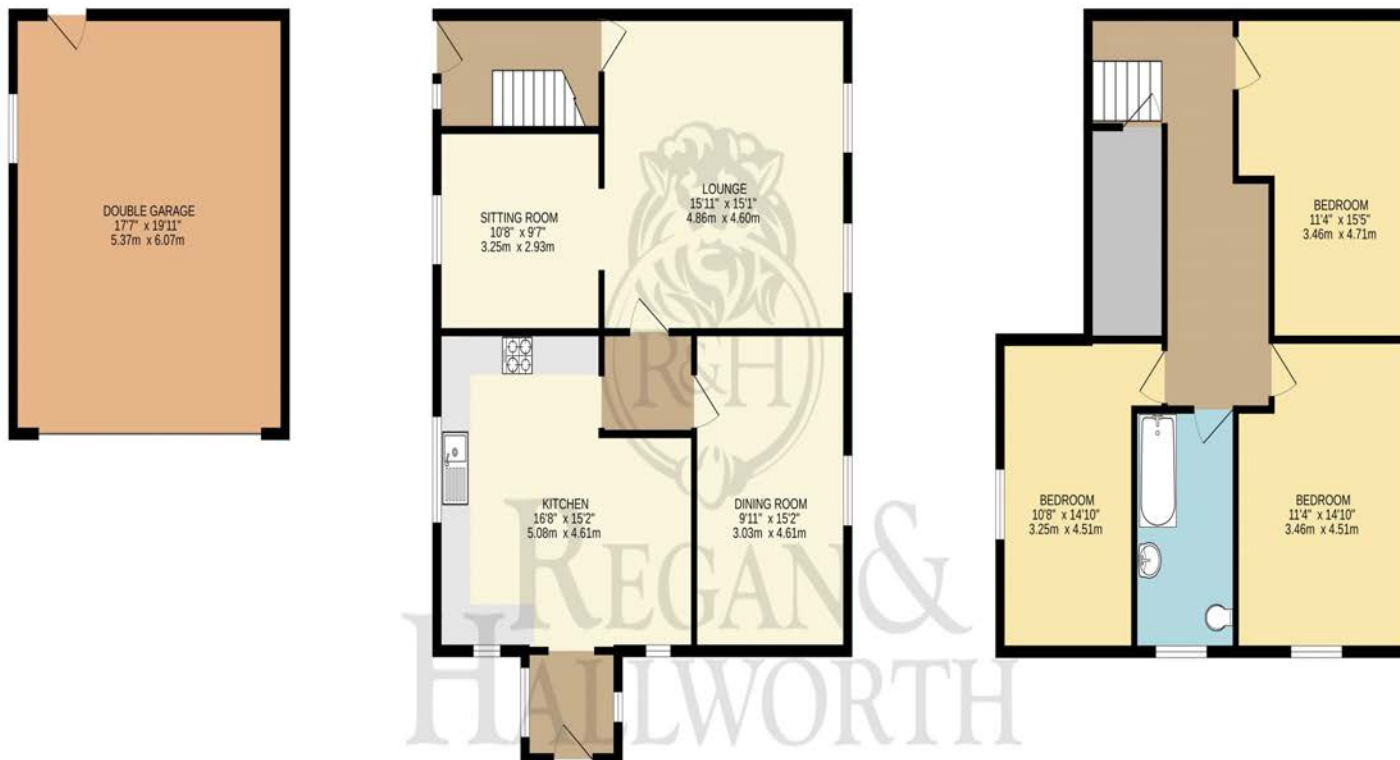
The property itself is beautifully presented throughout retaining a lovely cottage-feel to it. In brief the property comprises; a front porch, a pretty farmhouse style kitchen which is finished with quality solid oak units & a stunning York Stone flagged floor. There are three separate reception rooms including a main lounge with feature fireplace and smart log burner plus exposed stone walls & rustic ceiling beams. Upstairs there are three double bedrooms with the master bed benefiting from elegant fitted wardrobes, plus there is a generous principal bathroom suite.

Externally the setting and views here are hard to beat. The cottage enjoys wonderful mature gardens to three sides which boast various York Stone patio areas, pathways & stocked borders. To the front is off road parking via a generous driveway & access to a particularly large double garage which is another key feature of this home. The cottage is warmed by gas central heating & the boiler is only 3 yrs old. Viewings essential on this fantastic cottage.









The Professional Estate Agents

TOTAL FLOOR AREA : 1903 sq.ft. (176.8 sq.m.) approx.

Whilst every attempt has been made to ensure the accuracy of the floorplan contained here, measurements of doors, windows, rooms and any other items are approximate and no responsibility is taken for any error, omission or mis-statement. This plan is for illustrative purposes only and should be used as such by any prospective purchaser. The services, systems and appliances shown have not been tested and no guarantee as to their operability or efficiency can be given.  
Made with Metropix ©2025



rightmove

onTheMarket.com

The Property Ombudsman

LR Finance

We do our best to ensure that our sales particulars are accurate and are not misleading. We also ask our clients to check their own sales particulars and verify the information contained in them is correct. However, fixtures and fittings and appliances have not been tested and therefore no guarantee can be given that they are in working order. All measurements and land sizes are quoted approximately. **Tenure** - Regan & hallworth have not had sight of the title documents and therefore the buyer is advised to obtain verification from their solicitors or surveyor. **Council Tax** - You are advised to contact the local authority for details. **Wigan:** 01942 244991 | **West Lancashire:** 01695 585258 | **Chorley:** 01257 515151. If there is any point of particular interest to you please contact us and we will be pleased to check the information.



#### WIGAN OFFICE

4-6 Library Street, Wigan  
Lancashire WN1 1NN  
01942 205555  
wigan@reganandhallworth.com

#### STANDISH OFFICE

8 High Street, Standish  
Wigan WN6 0HL  
01257 473727  
standish@reganandhallworth.com

#### PARBOLD OFFICE

5-7 Station Road, Parbold Village  
Lancashire WN8 7NU  
01257 464644  
parbold@reganandhallworth.com

@reganhallworth

Regan & Hallworth

@reganandhallworth

@reganhallworth

www.reganandhallworth.com