

Grove Road, Ansty, Coventry, CV7 9JE

newman
property experts



Grove Road | Ansty | CV7 9JE

£475,000



VIEW THE MATTERPORT 3D TOUR THROUGH YOUR PC OR LAPTOP

Situated on approximately 1/2 an acre overlooking countryside, this property is an ideal project. Situated at the end of a country lane with canal nearby but still close to great links such as the M6, M69 and A46.

The ground floor comprises; entrance hallway, lounge, conservatory, kitchen diner, utility room, WC and a study.

The first floor comprises; landing, master bedroom with En-Suite bathroom, 2nd double bedroom with En-Suite shower room, 2 further double bedrooms and a family bathroom.

Outside is parking for several cars.

On offer with no onward chain.

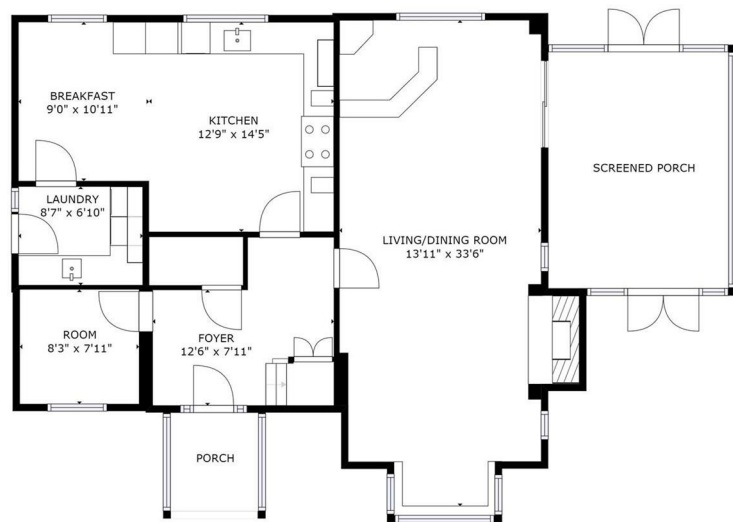
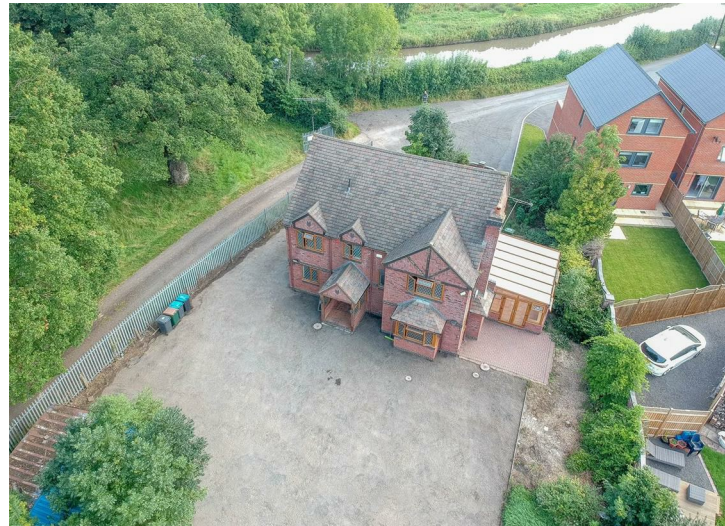


Call me
to book a
viewing



Paul Petticrew
02476 500019

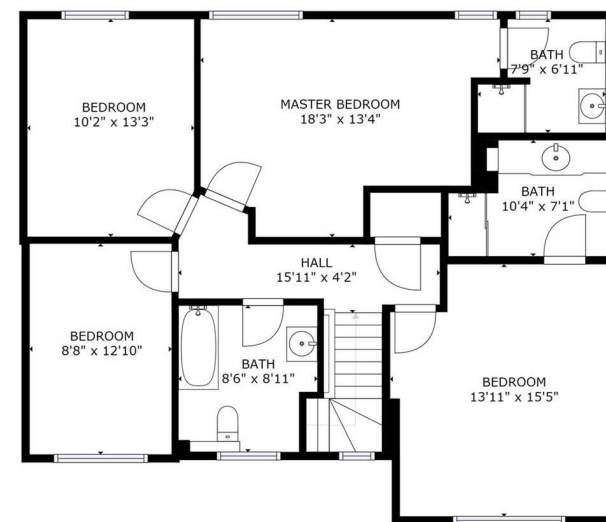
- Detached House
- Approximately 1/2 Acre
- 4 Double Bedrooms
- 3 Bathrooms
- Study
- Kitchen Diner
- Conservatory
- Large Entertaining Lounge
- Utility Room
- Parking for Several Cars



GROSS INTERNAL AREA
FLOOR 1: 1045 sq ft, FLOOR 2: 1002 sq ft
EXCLUDED AREAS: PORCH: 203 sq ft
TOTAL: 2047 sq ft

FLOOR 1

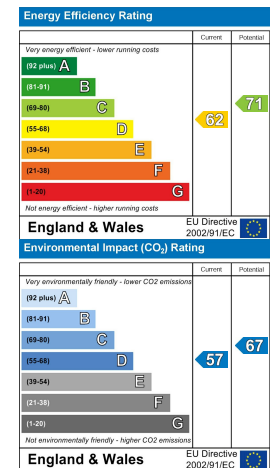
POWERED BY
matterport



GROSS INTERNAL AREA
FLOOR 1: 1045 sq ft, FLOOR 2: 1002 sq ft
EXCLUDED AREAS: PORCH: 203 sq ft
TOTAL: 2047 sq ft

FLOOR 2

POWERED BY
matterport



02476 500019

paul.petticrew@newman.uk.com

newman.uk.com

Friars House, Manor House Drive, Coventry
CV1 2TE

Agents note: All measurements are approximate and whilst every attempt has been made to ensure accuracy they are for general guidance only and must not be relied on. The fixture and fittings referred to have not been tested and therefore no guarantee can be given that they are in working order. Internal photographs are reproduced for general information and it must not be inferred that any item shown is included with the property. Newman Property Services Ltd. Registered Office: 1 Regent Street, Rugby, CV21 2PE. Registered in England & Wales: 4018410. VAT Registration No. 754 0628 33

newman
property experts