



For Sale

7 Cliftonville Gardens, Northampton

Offers Over £200,000

	2
	2
	1

I am delighted to offer this beautifully luxury 2 bedroom apartment, in the much sought after area of Cliftonville and is within easy walking distance of both the General Hospital, new University Campus and Northampton Town Centre.

I am delighted to offer this beautifully luxury 2 bedroom apartment, in the heart of Northampton. This 1st floor apartment is in a select development of 14 purpose built high quality apartments, in the much sought after area of Cliftonville and is within walking distance of both the general Hospital, new university campus and within easy walking distance of Northampton Town Centre.

The gardens and surrounding area are very well maintained, making the approach very welcoming. Located on the first floor, this lovely apartment offers high levels of security.

As you enter the door to the apartment you are welcomed by the inviting hallway, with oak doors to all adjoining rooms.

The open plan Kitchen/Lounge/Diner is spacious and has a very light and airy feel. The two bedrooms are both large enough for double beds if desired, and the principal room benefits from an ensuite shower room. There is also a family bathroom with shower over bath.

Joel Beardsmore

07989715168

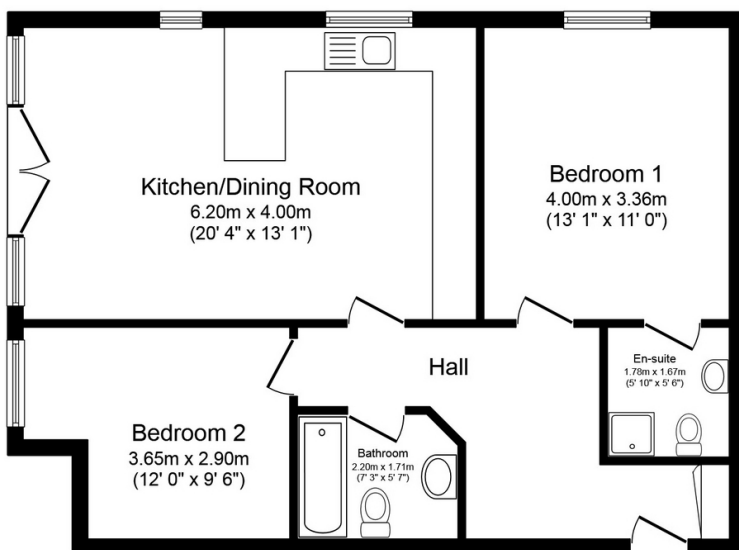
joel@thepropertyexperts.co.uk



 **The Property Experts**

The Property Experts UK

01604422551



Total floor area 66.4 sq.m. (715 sq.ft.) approx

This floor plan is for illustrative purposes only. It is not drawn to scale. Any measurements, floor areas (including any total floor area), openings and orientation are approximate. No details are guaranteed, they cannot be relied upon for any purpose and they do not form part of any agreement. No liability is taken for any error, omission or misstatement. A party must rely upon its own inspection(s).
Plan produced for Newman Property Experts. Powered by www.localagent.com

- No Chain
- Two Bedroom Luxury Apartment
- 1st Floor Apartment
- En-suite to Bedroom one
- Fitted Kitchen
- Juliette Balcony
- Allocated Parking for One vehicle
- 119 year Lease
- EPC rating B

