



Earlstone Crescent
Bristol, BS30

James Crumpton
The **Bristol** Property Expert

 **The Property
Experts**



This spacious and well-designed three-bedroom townhouse offers fantastic accommodation arranged over three floors, ideal for families, first-time buyers, or those seeking more space.

The property features three generous double bedrooms, a welcoming living/dining room with French doors that open onto a large rear garden—perfect for entertaining or relaxing. A separate kitchen provides a practical and modern space, while a convenient ground floor cloakroom and family bathroom complete the layout.

To the front, there is driveway parking for two vehicles and side access to the rear garden.

The location is ideal for day-to-day living, with nearby local shops and easy access to larger retail parks offering supermarkets and a wide range of retail outlets. A nearby leisure park provides excellent entertainment options, including places to eat, a cinema, and a sports centre.

Transport links are excellent, with the A417 giving direct access to North Bristol, the M4 and M5 motorways, Keynsham, and Bath. There are also a selection of well-regarded local schools catering to all age groups, making this an ideal family home.

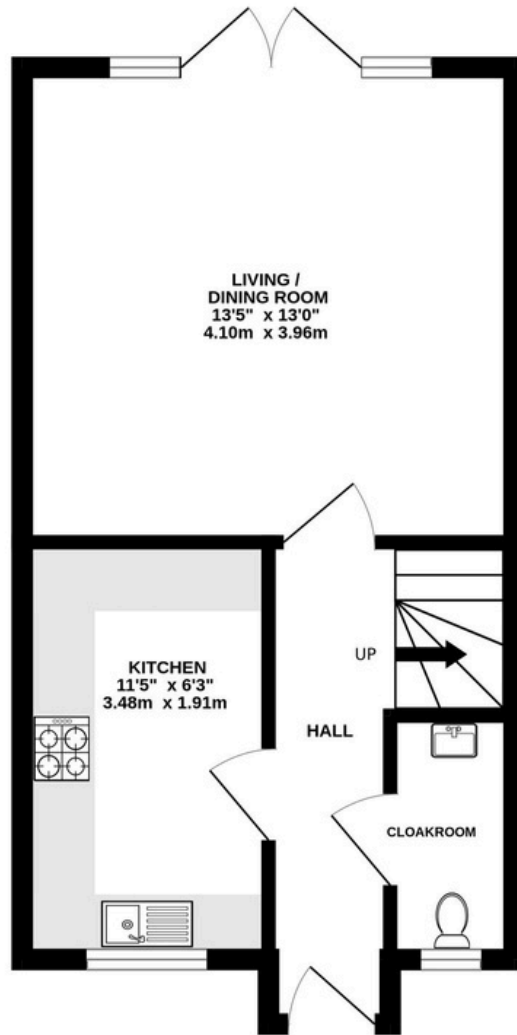
A superb property in a well-connected area.



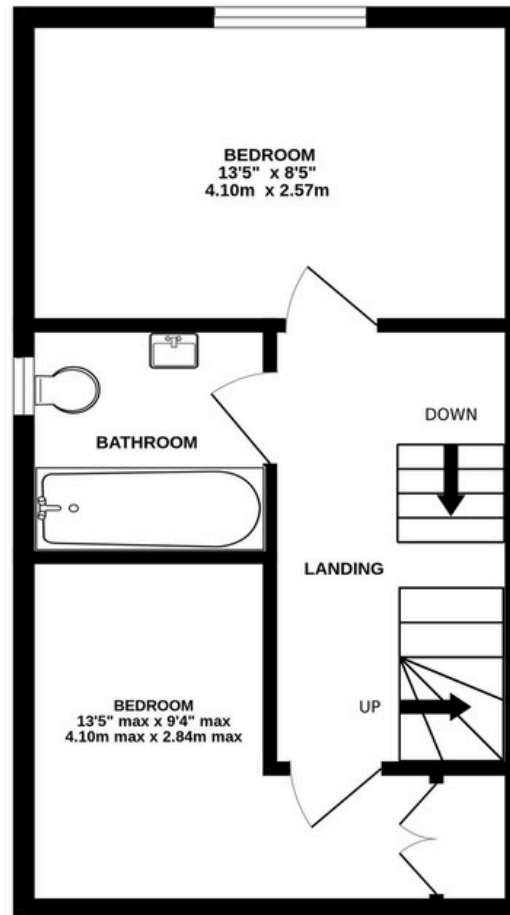




GROUND FLOOR



1ST FLOOR



2ND FLOOR

