



Conygre Grove
Filton, BS34

James Crumpton
The **Bristol** Property Expert

 **The Property
Experts**



Situated in the popular and well-connected area of Filton, this extended three-bedroom home offers generous living space, excellent transport links, and ample parking.

Filton is a sought-after location, known for its excellent transport links, including easy access to the M4 and M5 motorways, Bristol Parkway and Abbeywood train stations, and frequent bus routes into the city centre. The area is also home to major employers such as Airbus, Rolls-Royce, and the MOD, as well as a range of local amenities, schools, and green spaces.

Upon entering, you are welcomed by an inviting entrance hall that leads into a spacious bay-fronted living room. The ground floor also features a dining area that flows seamlessly into the extended kitchen, creating the perfect space for entertaining. A conservatory at the rear provides additional living space and overlooks the beautifully maintained garden. The bathroom is also conveniently located on the ground floor.

Upstairs, the first floor boasts three well-proportioned bedrooms, with the primary bedroom benefiting from fitted wardrobes.

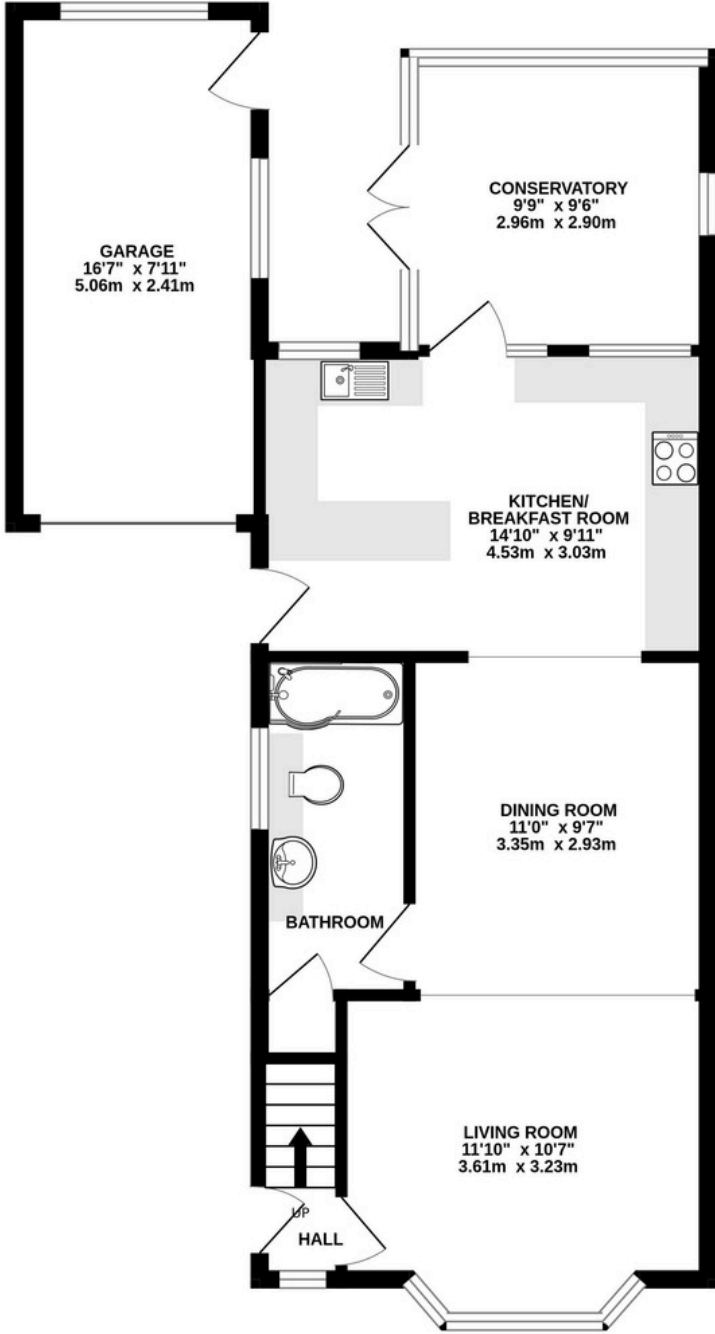
Externally, the property offers a beautifully maintained rear garden with access to the garage, which leads through to the block-paved front garden. With driveway parking for multiple vehicles, this home is ideal for families or professionals needing space and convenience.







GROUND FLOOR



1ST FLOOR

