



For Sale

18 Lyndon Road, Sutton Coldfield

Offers Over £350,000

OPEN HOUSE SUNDAY 29th JANUARY 2-4pm BY APPOINTMENT ONLY.... BEAUTIFULLY PRESENTED TWO BEDROOM VICTORIAN TOWNHOUSE IN A SOUGHT AFTER AREA OF SUTTON COLDFIELD.

 **2**

 **1**

This period townhouse offers a wealth of charm and character and has many original features throughout. The property is approached via a small foregarden and pathway leading to the front door. The accommodation briefly comprises: Living room, dining room, kitchen, guest WC/utility. On the first floor there are two spacious double bedrooms and family bathroom. To the rear there is a private block paved courtyard. The property benefits from gas central heating and Hive heating control system.

Rebecca Adams

0771 5763563

Rebecca@ThePropertyExperts.co.uk

Lyndon Road is set in a Conservation area in the ever popular Town Of Sutton Coldfield. The Property is well placed for all local shops and amenities including Sutton Park and is located just a short walk away from the train station with direct links into Birmingham and beyond.

Council Tax Band - C

EPC Rating - D

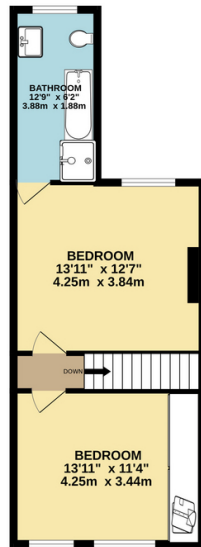
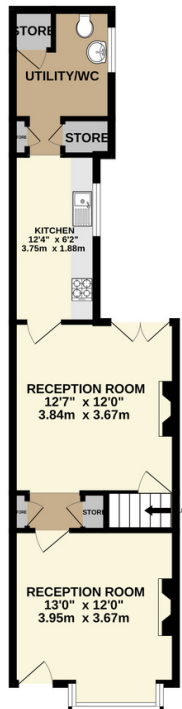
Tenure - Freehold



 **The Property Experts**

The Property Experts UK

01283268269



- BEAUTIFUL VICTORIAN PERIOD HOME
- SOUGHT AFTER LOCATION
- TWO SPACIOUS DOUBLE BEDROOMS
- DOWNSTAIRS WC/UTILITY
- GAS CENTRAL HEATING
- FAMILY BATHROOM
- MANY ORIGINAL FEATURES
- EPC RATING D

