



Furze Hill, Purley, CR8

Offers Over £4,000,000





*NO ONWARD CHAIN | 9,000 Sq Ft, Over Four Floors | Lift to a
First Floor Bedroom | Seven Bedrooms | Five Bathrooms | Two
Home Offices | Indoor Jacuzzi & Sauna*



Key Features

- 9,000 sq ft over Four Floors
- Lift to a First Floor Bedroom
- Seven Bedrooms
- Five Bathrooms
- 41ft Bespoke Main Kitchen/Diner plus a second Kitchen
- South Facing Garden set in over an Acre
- Two Home Offices
- Indoor Jacuzzi and Sauna
- Gym
- Freehold | No Onward Chain | EPC : C









London's Best Kept Secret!

... CLICK ON THE VIDEO TOUR ...

Nestled in a conservation area on an exclusive estate on the threshold between London and Surrey, this impressive seven-bedroom, five-bathroom luxury residence is surrounded by one acre of secluded gardens and grounds.

Inside, expansive living and entertaining spaces extend over four floors, totalling 9000 square feet. Flawlessly decorated with beautiful wallpaper, Farrow & Ball paintwork, new Somerset oak floorboards, soft carpets and large floor tiles, no expense has been spared by the current owners, who have fully refurbished the property into the bespoke suburban haven it is today.

Outside, remote-controlled gates reveal a large gravel driveway and double garage to the side, while mature trees screen the lush south-facing lawn, split-level terrace, vegetable garden and orchard to the rear.

The Entertainment Level

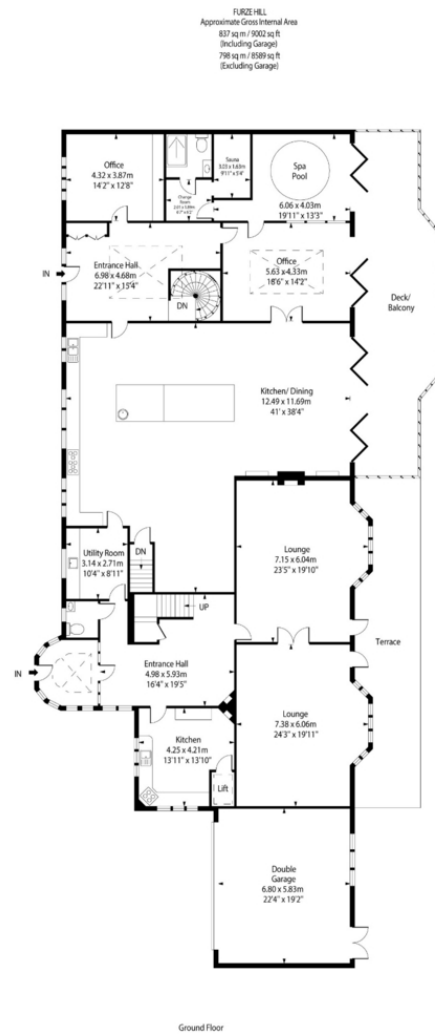
From the driveway, enter a hallway crowned by a stunning roof lantern that brightens large floor tiles and a bespoke wood-and-glass spiral staircase that descends to the lower floor.

This 40ft socialite's dream offers everything from a home gym to a









Please note: This floor plan is not drawn to scale and is intended as a guide only. Whilst the greatest effort is made to achieve accuracy, Kirk Enterprise Estates and their property marketing subcontractors cannot be held responsible for any errors.

Tenure Type: Freehold
Council Tax Band: H
Council Authority: Croydon