



Kensington Close, Northampton, NN2

Offers Over £300,000



Key Features

- 3 Bedroom Semi-detached Home
- Built in 2016 by Mulberry Homes
- Fitted Kitchen with integrated appliances
- Downstairs W/C
- En-suite to Master Bedroom
- Family Bathroom
- Single Garage with Driveway
- Landscaped Gardens to the Front & Rear
- EPC RATING B
- Council tax band C



Joel Beardsmore & Partners are delighted to bring to the market this beautiful three bedroom semi-detached home in the Thornton Park area of Kingsthorpe.





Joel Beardsmore & Partners are delighted to bring to the market this beautiful three bedroom semi-detached home in the Thornton Park area of Kingsthorpe.

Built in 2016 by Mulberry Homes, the home comprises of lounge with French doors to garden, kitchen/dining room with French doors to garden and w/c to the ground floor. To the first floor there are three double bedrooms, family bathroom and an en-suite to the master bedroom. Outside benefits from a front garden, a driveway, single garage to the rear and a beautifully landscaped rear garden. The area benefits from several leisure facilities and parks including Thornton Park, local Supermarkets Waitrose, Aldi & Asda, a number of golf courses and the local train station is 1.4 miles from the property.

•••Viewing is highly recommended•••

Please contact JOEL your LOCAL agent for more information.

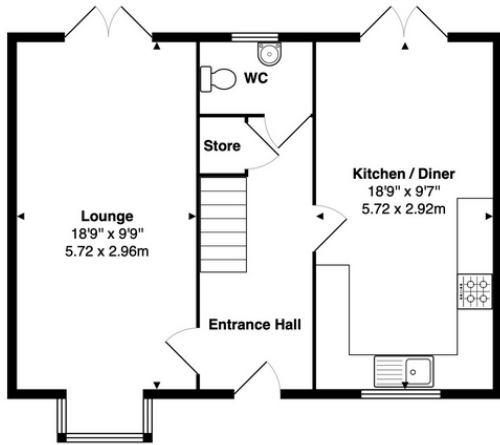
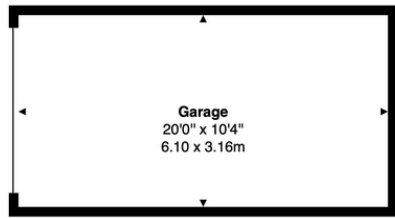
Property & Services information

Mobile Coverage: 4G coverage is available in the area - please check with your provider.

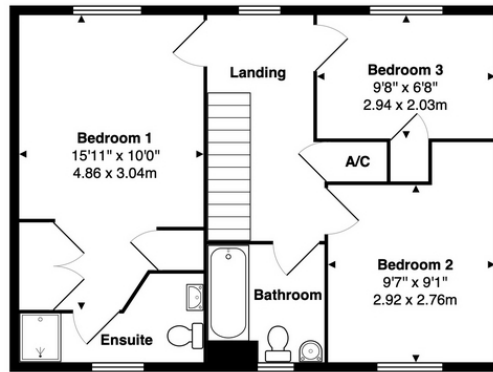
Broadband Availability: Ultrafast broadband (FTTC) is available in the area

<https://www.ofcom.org.uk/phones-telecoms-and-internet/advice-for-consumers/advice/ofcom-checker>



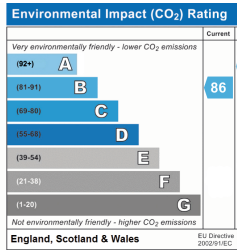
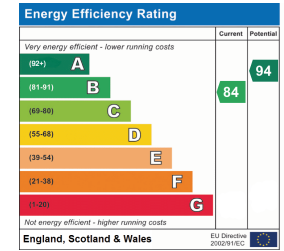


Ground Floor
Area: 494 ft² ... 45.9 m²



1st Floor
Area: 484 ft² ... 45.0 m²

Total Area: 978 ft² ... 90.8 m² (excluding garage)
All measurements are approximate and for display purposes only



Tenure Type: Freehold
Council Tax Band:
Council Authority: