



For Sale

210 Baldwins Lane, Croxley Green

Offers Over £650,000

 **3**

 **1**

 **3**

 **4402.44 sq ft**

 **1413 sq ft**

Will Mileham

01923 751545

Will.Mileham@thepropertyexperts.co.uk

Will Mileham is excited to present to market this spacious three bedroom, semi detached home, located in the sought after area of Croxley Green!

Discover this delightful three-bedroom semi-detached home, complete with a single garage and room for three cars on the driveway. The extended dining area seamlessly connects with the living space, complemented by a downstairs WC and utility area. Upstairs, three bedrooms and two of which feature fitted wardrobes, alongside a family bathroom. With its cosy living room and practical amenities, this home offers comfort and style for modern living.

The exterior of the property is graced by a beautifully large rear garden, offering a picturesque retreat for outdoor enjoyment and relaxation.

Tenure: Freehold

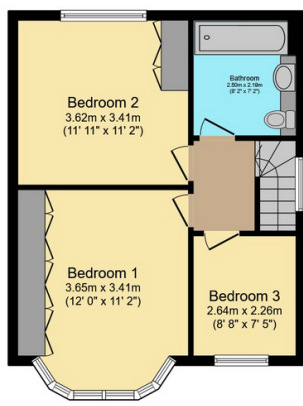
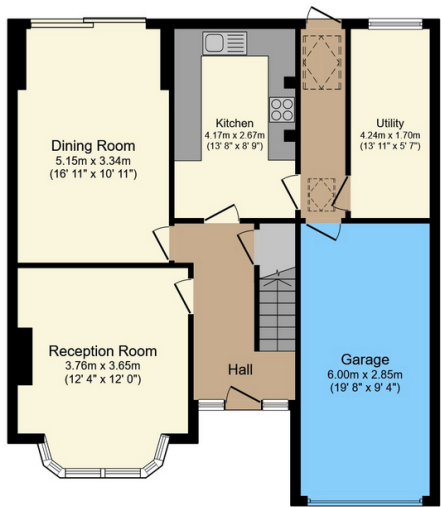
Property & Services Information

Mobile Coverage: 5G coverage is available in the area - please check with your provider.

Broadband Availability: Broadband is available in the area.

Utilities: Mains gas, electricity, mains water are connected.





Ground Floor

First Floor

Total floor area 131.3 m² (1,413 sq.ft.) approx

This floor plan is for illustrative purposes only. It is not drawn to scale. Any measurements, floor areas (including any total floor area), openings and orientation are approximate. No details are guaranteed, they cannot be relied upon for any purpose and they do not form part of any agreement. No liability is taken for any error, omission or misstatement. A party must rely upon its own inspection(s). Powered by www.localagent.com

