



Thornfield Way, Hinckley, LE10

Offers Over £450,000

The Property Experts UK

thepropertyexperts.co.uk | 0330 179 8180





- Flexible Accomodation
- Driveway
- No Chain

Graham Cross, The Property Expert for Hinckley and Bosworth is delighted to bring to market this 4 bedroom Bungalow offering flexible accommodation with a large Living Room, Kitchen, Family Room, 4 Bedrooms, 2 Bathrooms and a further Kitchen/Diner.

Previously used as an adult care facility each bedroom is equipped with wash basin and all have fire doors.

The space and flexibility will make this a really attractive proposition for many and the beautiful rear garden is laid out over several levels with water feature and separate brick built garden room/store.

Viewing is an absolute must to understand the size and potential this property has.

Call Graham on 07515 420242 to arrange your viewing.

EPC Rating

Council Tax Band - C

Tenure - Freehold





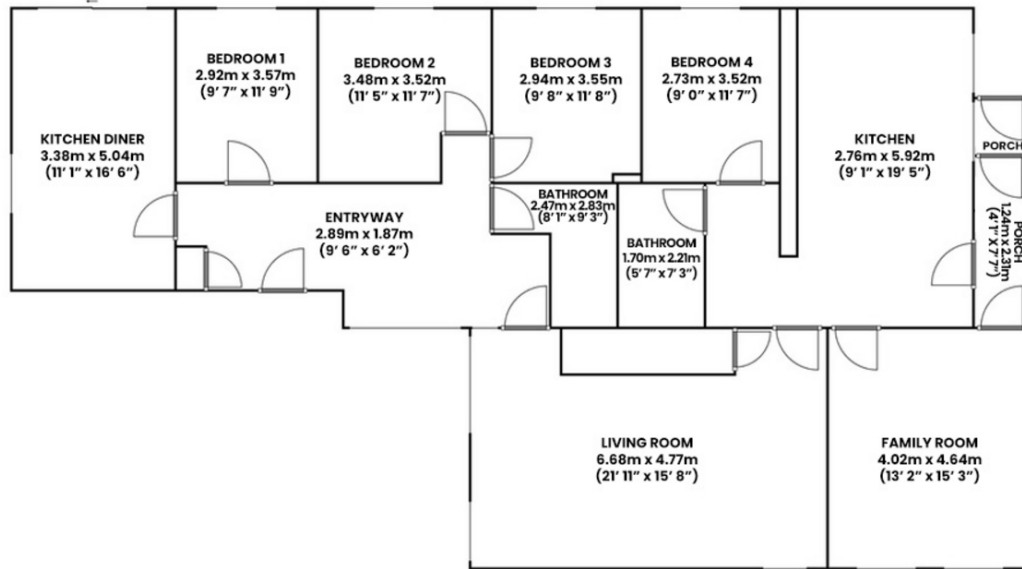
 4

 2



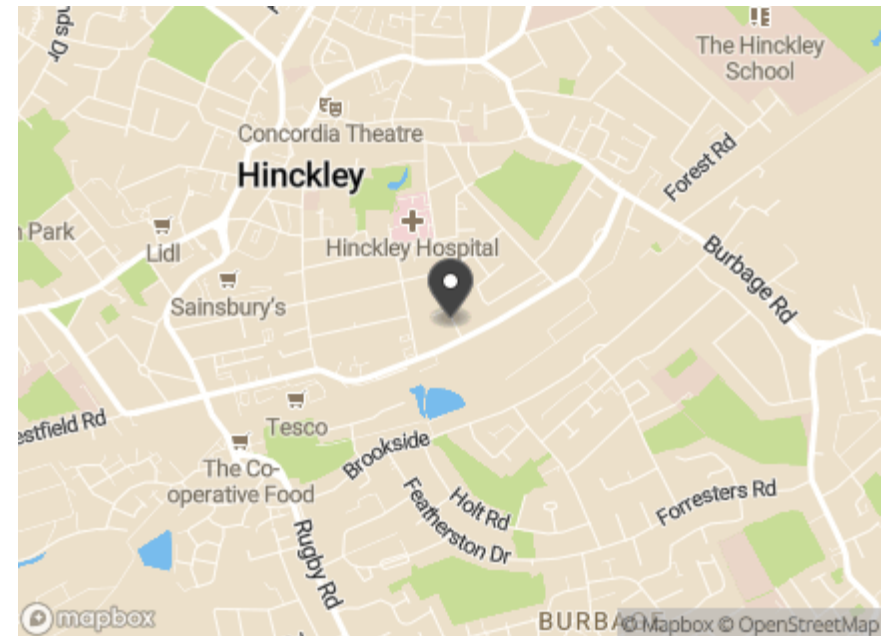
1744 sq ft





Energy Efficiency Rating		
	Current	Potential
Very energy efficient - lower running costs		
(92+) A		
(81-91) B		
(69-80) C		
(55-68) D		
(39-54) E		
(21-38) F		
(1-20) G		
Not energy efficient - higher running costs		
	66	75
EU Directive 2002/91/EC		
England, Scotland & Wales		

Environmental Impact (CO ₂) Rating		
	Current	Potential
Very environmentally friendly - lower CO ₂ emissions		
(92+) A		
(81-91) B		
(69-80) C		
(55-68) D		
(39-54) E		
(21-38) F		
(1-20) G		
Not environmentally friendly - higher CO ₂ emissions		
	58	68
EU Directive 2002/91/EC		
England, Scotland & Wales		



The Property Experts UK

13 Hanover Square,, Mayfair,, London,, W1S 1HN

thepropertyexperts.co.uk | 0330 179 8180