



For Sale

Plasnewydd Goldcliff Road, Newport

Offers Over £800,000

Under Offer

 **6**

 **4**

 **3**

 **2.7 ac**

 **2712.51 sq ft**

Steve Davies

07927070232

Steve@thepropertyexperts.co.uk

Welcome to this very special property situated in the village, parish and community of Goldcliff, on the outskirts of Newport, South Wales, with close access to M4 junction 24 Cardiff / Bristol / London.

This spectacular six bedroom home was purpose built by the current owner for family living, originally a four bedroom property, extended in 2012 adding an almost self contained two bedroom annexe with bathroom, kitchen, and living-diner.

The original property houses four large double bedrooms, including a master with both en suite (larger than an average family bathroom) with a walk-in shower, WC, hand basin and double jacuzzi, plus a walk in wardrobe and a Juliet balcony overlooking the front courtyard. Upstairs you will also find a family bathroom with all body jet shower, bath tub, hand basin and WC. The centre of the landing has a lovely space currently used as an open office, but would lend itself well to a family cinema, or play area.

Downstairs you have a large entrance hall with a WC and utility room, and doors leading to both the kitchen, and living and dining room which opens out to the garden through patio doors.

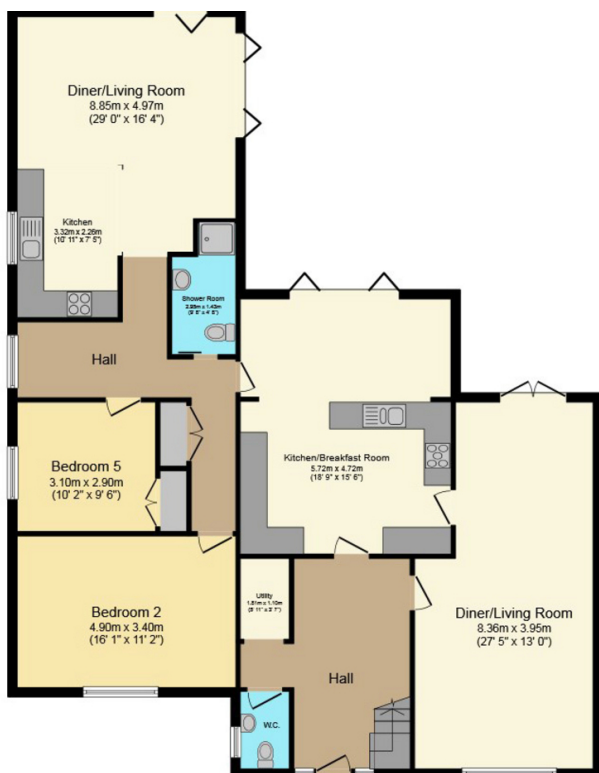
The family kitchen is a large space with under lighting and a segregated breakfast area looking out over the garden through bi folding doors.



 **The Property Experts**

The Property Experts UK

01633535575



Ground Floor

Floor area 150.5 sq m (1 620 sq ft) approx

- Equestrian property
- Stables and Paddock
- Six bedrooms
- Unspoilt protected countryside
- EPC Rating - D

