



For Sale

Flat 11, Tiger Court Anglesey Road, Burton-on-Trent

Offers Over £115,000

CALLING ALL INVESTMENT PURCHASERS! Spacious two bedroom duplex apartment with allocated parking space located just a short walk from Burton Town Centre



Rebecca Adams

0771 5763563

Rebecca@ThePropertyExperts.co.uk

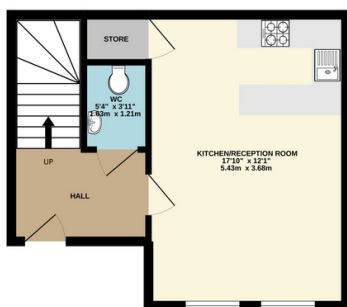
Offered for sale with no upward chain this lovely apartment is situated on the ground floor and access is gained via it's own front door. It has many original features including exposed beams. Located within walking distance of Burton town centre and all it's amenities including Burton train station and close to the A38. The accommodation briefly comprises: entrance hallway, guest WC, open plan kitchen/lounge with understairs store cupboard; on the first floor there are two good sized bedrooms, dressing room and bathroom. Outside there is one allocated parking space right in front of the property and a bin store.

Council Tax Band - B

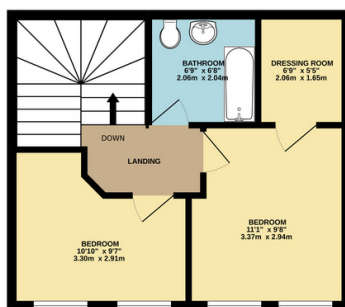




GROUND FLOOR
332 sq.ft. (30.8 sq.m.) approx.



1ST FLOOR
365 sq.ft. (33.9 sq.m.) approx.



TOTAL FLOOR AREA: 696 sq.ft. (64.7 sq.m.) approx.
Whilst every attempt has been made to ensure the accuracy of the floorplan contained herein, measurements of doors, windows, rooms and any other items are approximate and no responsibility is taken for any error, omission or mis-statement. This plan is for illustrative purposes only and should be used as such by any prospective purchaser. The services, systems and appliances shown have not been tested and no guarantee as to their operability or efficiency can be given.
Made with Metropix ©2022

- No upward chain
- Character Duplex Apartment
- Walking distance of Burton Town Centre
- Allocated parking space
- Master bedroom with dressing room
- Downstairs WC
- Ideal Investment Property
- EPC Rating D

