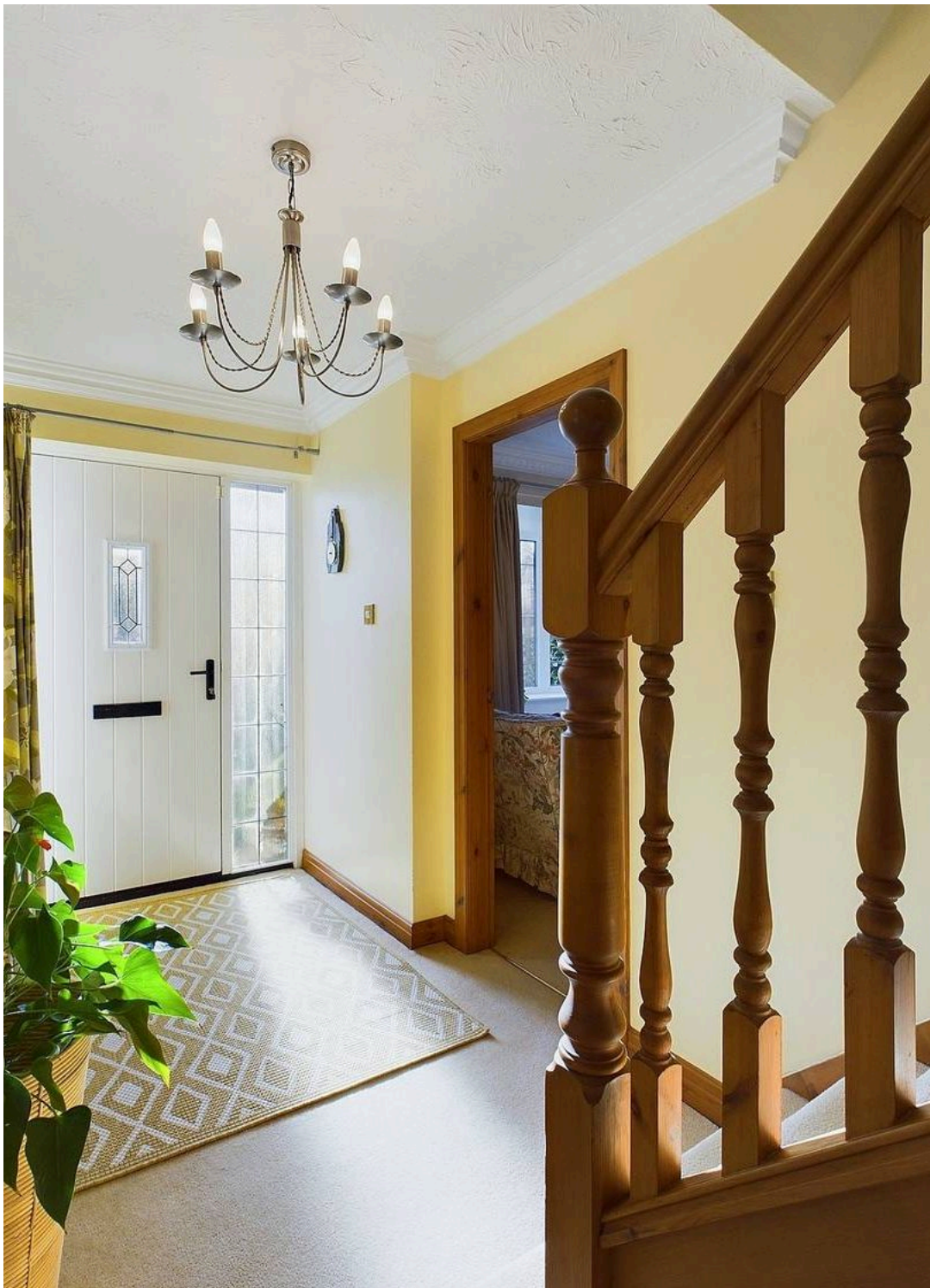




19 The Vinery, New Longton

Preston

Guide Price **£450,000**



19 The Vinery

New Longton, Preston

Located in a peaceful village location on a secluded cul-de-sac in central New Longton a short walk from New Longton Primary School and within easy access to all local amenities. Great transport links with the motorway and Preston Railway Station only 10 minutes drive. Council Tax band: F

Tenure: Freehold

EPC Energy Efficiency Rating: C

EPC Environmental Impact Rating: D

- 4 Bedrooms
- 3 Reception Rooms
- Quiet Private Location
- Extensive Driveway
- Village Location
- No Chain

Entrance Hall

Hall with under stairs cloakroom.

Lounge

Large bay window overlooking the front garden. Gas fire set in traditional fire surround. French glazed doors to dinning room.

Dining Room

Good sized dining room opening out into garden room. Door to Kitchen.

Garden Room

Bifold doors open out on to the rear garden. Remote control Velux windows with rain sensors.

Dining Kitchen

Spacious kitchen with good range of eye and low level units with 1 1/2 Frankie stainless steel sink, integrated appliances include: Neff dishwasher, fridge freezer, Neff electric ovens, gas hob. Large dining area. Windows to rear and side.

Study

Window to front.

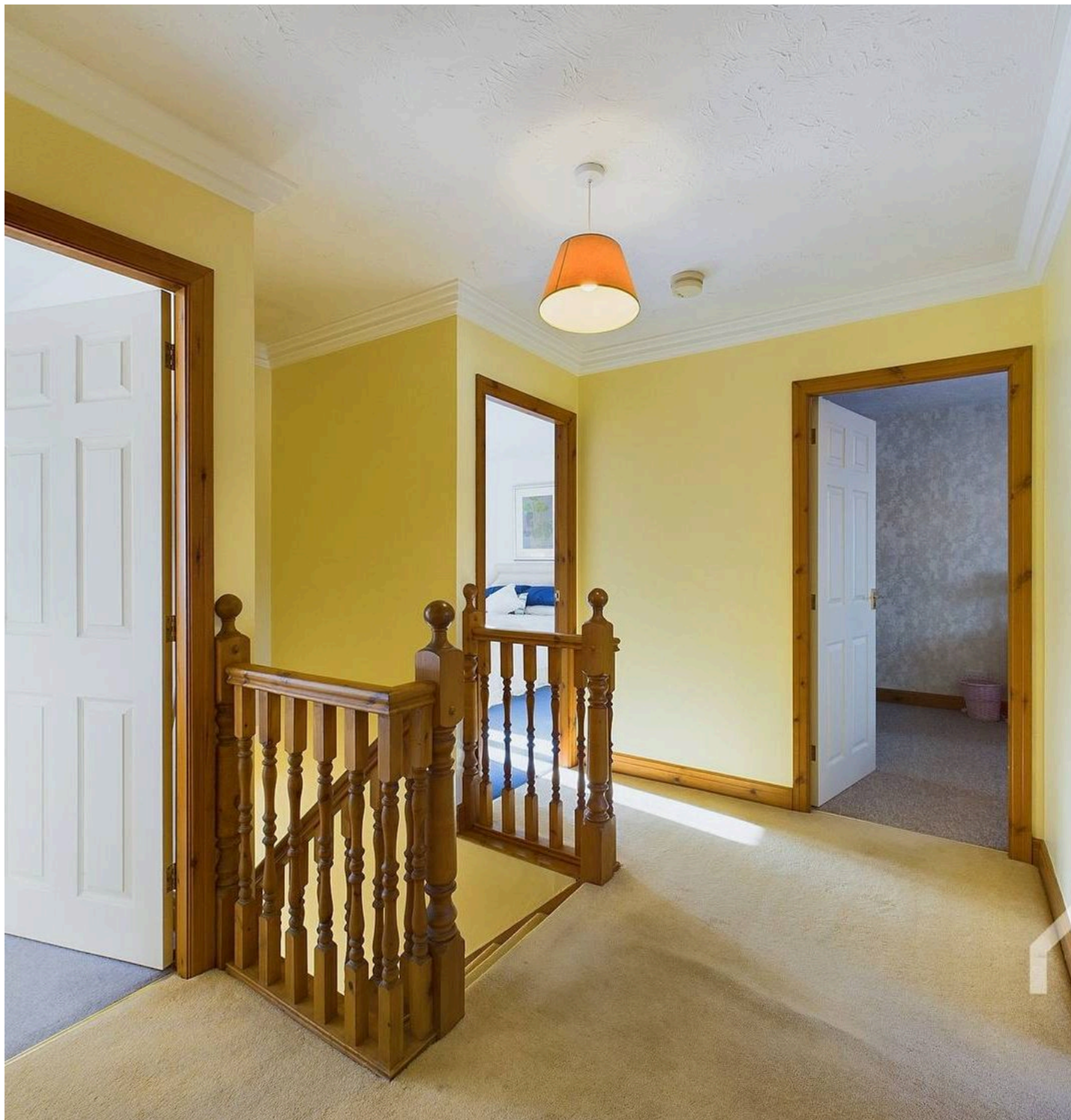
Downstairs WC

Two piece suite comprising low level WC and wall mounted wash hand basin. Part tiled. Window to side.

Utility

Low level units with stainless steel sink, plumbed for washing machine and vented for dryer. Worcester Bosch Greenstar installed August 2023. Door to rear garden. Window to rear.





Master Bedroom

Fitted wardrobes, window to front and side.

En-suite

Three piece suite comprising shower cubicle, vanity wash hand basin and low level WC with part tiled walls.

Bedroom Two

Fitted wardrobes, window to rear.

Bedroom Three

Fitted wardrobes, window to front.

Bedroom Four

Window to rear.

Bathroom

Four piece suite comprising: Panelled bath with mains shower over, pedestal wash hand basin, low level WC, bidet and window to rear.

GARDEN

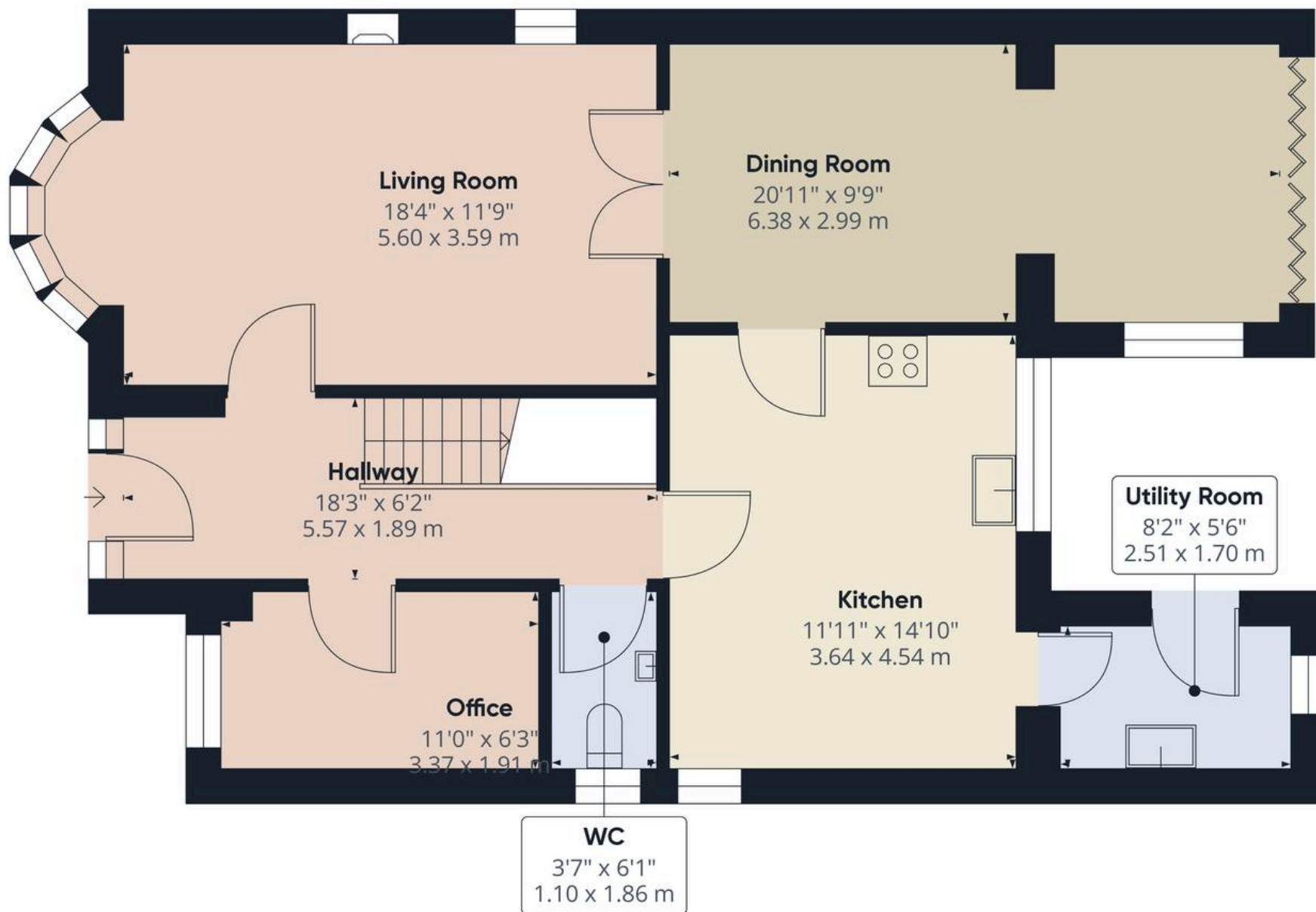
Lovely rear garden mainly laid to lawn with mature borders and shrubs. 2 patio areas, garden shed and greenhouse. Substantial parking area at the side with double gates giving vehicle access to a further secure parking area.

GARAGE

6 Parking Spaces

Parking for 2 vehicles on the front drive with additional parking for up to 4 cars at the side.





Approximate total area⁽¹⁾

881.98 ft²

81.94 m²

(1) Excluding balconies and terraces

While every attempt has been made to ensure accuracy, all measurements are approximate, not to scale. This floor plan is for illustrative purposes only.

GIRAFFE 360

Ground Floor

Ready to make your next move? Let us help you find your dream home.

With over 20 years' experience in the North West property market we know what it takes to match buyers with sellers. After all, that's why this brochure is now in your hands!

We are streets ahead of our competitors because we know what it takes to make your move smooth, stress free and profitable.

Looking to list your property?

Thanks to our unique selling models and team of dedicated MovingWorks Property Partners, we combine a forward-thinking and technology-driven approach with a genuinely personal touch.

Why not call us on 01772 615550 now?

Introducing MWConcierge

Helping you take the time and stress out of mortgages, conveyancing, removals and more.

We understand that no matter how experienced you are at buying and selling properties, the to-do list can often be daunting at the start of any move. Let us take the hassle out of many of those challenging tasks and make your move that little bit smoother with MWConcierge.

Our awards and accreditations

MovingWorks is proud to have won not one but two British Property Gold Awards in recent years, demonstrating our best-in-class service and commitment to excellence. As registered members of The Property Ombudsman and NAEA Propertymark estate agents we are also able to demonstrate that we adhere to the highest industry standards, providing our clients with genuine peace of mind.

